
Pumping Pressure Estimation Using Famous Turbulent Fluid Mechanics Equations Through Python Simulations

Luciana Claudia Martins Ferreira Diogenes

Independent Researcher, Frutal, Brazil

Email address:

lucianafem@yahoo.com.br

To cite this article:

Luciana Claudia Martins Ferreira Diogenes. Pumping Pressure Estimation Using Famous Turbulent Fluid Mechanics Equations Through Python Simulations. *American Journal of Mechanical and Industrial Engineering*. Vol. 5, No. 4, 2020, pp. 53-58.

doi: 10.11648/j.ajmie.20200504.11

Received: September 21, 2019; **Accepted:** June 23, 2020; **Published:** September 8, 2020

Abstract: One of the most important tasks when designing a pumping system is for the engineer or specialist to know the components to be used including the pumps. Knowledge about the project helps to achieve a more economical system with less risk of failure. One of these failures may result in the insertion of a pump that does not generate the proper pressure, causing the system not to function as designed. To know the pumping pressure in a system containing one pump, one long pipe and one reservoir, it is necessary to know which are the possible equations that could calculate the friction factor f more accurately to obtain the pressure. The main equation used in the turbulent regime, where Reynolds number Re ($Re > 4,000$), is the Colebrook equation and it is a nonlinear equation and it requires numerical programs to calculate the factor friction. Other equations are apparently simpler to employ, but are limited by the Reynolds Re number and / or the relative roughness. The purpose of this paper is to know which of the famous equations in the turbulent regime - Haaland, Blasius, Prandtl, von Karman - could be used to design a bomb when confronted with the calculations obtained by the Colebrook equation. The simulations were programmed in Python and the pumping pressure values and the error percentage were compared.

Keywords: Fluid Mechanics, Pumping, Colebrook, Turbulent Regime, Python

1. Introduction

The art of programming consists of applying a programming language to solve some kind of problem, seeking a solution in a faster and more efficient way [1].

Python is associated with the family of big killer snakes like those that appear in the films Python (2000) and Boa x Python (2002). The python snakes are large, usually between 4.5 and 6 m in size, but they are not poisonous, being native to Africa. Therefore, the help pages, forums and program development environments, there is a snake logo. However, in fact, the name Python was not in homage to this family of snakes, but to the author's favored program called "Monty Python's Flying Circus" [2].

In the late 1980s in the Netherlands, the Python programming language began to be developed by Guido van Rossum. After creating several versions like 0.9.0 and 1.0, Guido developed version 1.2 in the United States. As of version 2.0, the software has become free. Python has some relevant features, some of which are [3]:

1. Multiplatform: Python installation can be installed on any computer platform.
2. Portability: Even if Python is not installed, applications could be deployed to other platforms.
3. Free software: Python is free software.
4. Extensibility: possibility of extension to other languages like C or Fortran.
5. Object-oriented: everything is considered in the software: functions, variables and even modules.
6. Automatic typing: you do not need to define the variables in the program. The variable type (string, integer, float, etc.) is determined when the code is being executed.
7. Strong typing: variables must always be of the same type to interact. You can not, for example, add the string '24' with the integer 2. There is the possibility of converting the variables.
8. Readable code: ability to split blocks of code to make code more readable.
9. Flexibility: there are many modules for all types of

applications, including internet, such as FTP, HTTP, XMLRPC, etc.

Programming is undoubtedly used in many areas, the art of programming can be developed by anyone, as long as they are aware of logic, choose a program and have a problem to solve. In this way it becomes possible to make use of a programming language to solve problems of fluid mechanics. The resolution of this type of problem is very important in the case of industries that make a great transport of daily fluids, as is the case of a sugar-alcohol plant, which transports fluid in both the liquid and the gaseous state [4]. Through Colebrook formulas we can delineate the Moody-Rouse diagram which is of great importance to help solve one of the major problems in pipes which is the loss of load h_l caused by frictional effects on the flow in section pipes constant (Darcy-Weisbach equation) [5].

The head loss h_{li} can be determined if is provided the pressure difference between any two points in a piping system or if is summed the major losses h_l due to frictional effects in fully in constant-area tubes, and h_{lm} , resulting from entrances, fittings, areas changes, etc [5]. In many works is done the head loss calculation to select a pump. In this work, the pump pressure will be calculated with the head loss equations.

In [6] the problem reported is about using the Colebrook equation to calculate the friction factor precisely because it is an implicit equation and requires more computational time. So for large piping systems, other equations could be substituted. The authors worked with more than thirty explicit equations and they compared the value obtained with the value given by the Colebrook equation, besides also comparing with computational time.

The calculation of the dimensioning of diameters in systems in distribution water is a problem involving a friction factor which is treated in [7]. This diameter in addition to meeting the needs of the system, it should also have the lowest annual cost of installation and operation. The authors chose to calculate the economic diameter using the Bresse formula, the Method Based on Pipe Weight (MBPW) and Method of the Linear Variation of Pipe Costs (MLVPC).

The equation that determines the real costs of the commercial pipe diameters is apparently laborious but, easily implemented with the computational tools currently available. Such equation contains the friction factor f , which the authors report can be retrieved from Colebrook-White equation.

The pressure loss in pressurized pipes can be determined by Darcy-Weisbach equation, which contains the friction factor f as a variable. Due to the difficulty in calculating the friction factor using the Colebrook equation, authors [8] used six equations and for each one, fifteen values of is the relative surface roughness were applied.

Change of speed in a rotating pump that works with variable speed changes its flow and its efficiency. The authors [9] studied two equations to calculate this efficiency in three speed reductions and compared the values with about fifty pumps. The expression of the efficiency curve can be expressed by a set of variables, including the friction factor. Thus, in order to calculate the efficiency of a pump, it is necessary to accurate friction factor values.

The pressure drop due to friction can be easily calculated for a straight pipe section using a series of equations easily found in the literature on the subject of fluid mechanics. However, when introducing a bend to the pipe section there is a change flow direction and calculations need to be more accurate. In [10] the research was based on determining the pressure loss due to the several contributing factors, the bend angle, radius of curvature, flow velocity and pipe diameter. Per unit length the proposed head loss depends on the friction factor. The author informs that the friction factor, f , can be found from Moody's diagram or a formula approximating Moody's diagram such as Haaland's or Colebrook's equation. Thus, the head loss value it can be influenced by a friction factor value not calculated precisely.

To investigate different friction models for oscillating flow, [11] proposes to perform simulations and compare them with experimental results from a small-scale test rig. Per unit length the proposed head loss is dependent on the friction factor. Thus, this value needs to be precisely calculated so that the value simulated and experimental model can get closer to each other.

In [12], the author proposes a work aiming at to select a water feed pump in a steam generation system. The calculation of head loss defines the available Net Positive Suction Head (NPSH).

A work that involves selecting a pump for a borehole, it is showed in [13].

2. Methodology

2.1. Getting Equations in Laminar and Turbulent Regime

The laminar flow is a smooth, quiet, grouped flow, this flow usually occurs with fluids of great viscosity and at low speeds. Already the turbulent flow is when disordered, irregular, with random movements, this flow is common among fluids with lower viscosities. According to [14] a flow that hour is laminar time is turbulent is known as transitory. Experiments by Osborn Reynolds in the year 1880 gave rise to the Reynolds number, Re , the non-dimensional number that is used as a key parameter to determine which flow regime in the pipes.

According to [14], the flow in a circular tube is defined as laminar, transition flow and turbulent according to the Reynolds number:

$Re \leq 2,300$ laminar regimes

$2,300 < Re < 4,000$ transition flow

$Re \geq 4,000$ turbulent flow

The equation (1) for the laminar regime in a circular pipe is given by [14]:

$$f = \frac{64}{Re} \quad (1)$$

In [14], it is found that Cyril F. Colebrook (1910-1997) made a relation between the data available at the time for transition flow and turbulent flow, for all types of tube, both rough and smooth. This relationship gave rise to the equation that is now known as the Colebrook equation in which it is

represented in equation (2).

$$\frac{1}{\sqrt{f}} = -2 \log \left(\frac{\frac{\epsilon}{D}}{3.7} + \frac{2.51}{Re \sqrt{f}} \right) \quad (2)$$

where: ϵ/D : relative roughness, Re : Reynolds number, f : friction factor.

According to the authors [14], the Colebrook equation has been considered as the most accurate law of resistance to runoff and has been used in a universal way today. This formula carries with it a peculiarity, since the variable f exists on both sides of the equation, with no possibility of isolation, which ends up making its calculation more complex to be calculated manually, because in addition to labor it would take a long time to reach the results, and with the use of a computational method besides an almost immediate result the precision becomes much greater.

2.2. Haaland Equation

A simpler equation to be calculated than the Colebrook equation for not having the presence of both f in the equation, but according to authors such as [14], their results if compared in some cases there may be variations that reach up to 2% of difference. Therefore, if the calculation requires a more accurate result it is advisable to use the Colebrook equation. The Haaland formula is represented in equation (3):

$$\frac{1}{\sqrt{f}} = -1,8 \log \left[\left(\frac{\epsilon}{3,7D} \right)^{1,11} + \frac{6,9}{Re} \right] \quad (3)$$

2.3. Blasius Equation

In [14-17], it is stated that for a turbulent regime the equation known as Blasius correlation can be used within the range of Re equal to 4,000 to 10^5 given by (4):

$$f = \frac{0,316}{Re^{0,25}} \quad (4)$$

Observing equation (4) it can be concluded that it does not vary as a function of relative roughness.

2.4. Vón Karman Equation

When the Reynolds number is too high, the curves in the Moody diagram are almost horizontal, and this fact makes the friction factor not dependent on Re in this region. The greater the roughness with $Re \rightarrow \infty$, the faster the curve resembles a straight line, making f practically constant. In [14] is the Colebrook equation in which $Re \rightarrow \infty$, known as Vón Karman's equation:

$$\frac{1}{\sqrt{f}} = -2,0 \log \left(\frac{\epsilon}{3,7D} \right) \quad (5)$$

2.5. Prandtl Equation

The Prandtl equation cited in [14] is sometimes referred to as the Nikuradse equation [18] or the Prandtl-Nikuradse equation [19]. This equation is used when $\epsilon \rightarrow 0$, where the pipe is smooth [14]:

$$\frac{1}{\sqrt{f}} = 2,0 \log (Re \sqrt{f}) - 0,8 \quad (6)$$

The validity of Prandtl's equation is $5 \cdot 10^3 < Re < 4 \cdot 10^7$ for smooth pipes where $\epsilon \rightarrow 0$ [19].

2.6. Total Head Losses h_{IT}

The total head loss between section 1 and section 2 of pipes is given by [5]:

$$\left(\frac{p_1}{\rho} + \alpha_1 \frac{\bar{v}_1^2}{2} + gz_1 \right) - \left(\frac{p_2}{\rho} + \alpha_2 \frac{\bar{v}_2^2}{2} + gz_2 \right) = h_{IT} = h_l + h_{lm} \quad (7)$$

where p_1, p_2 : pressure, \bar{v}_1, \bar{v}_2 : velocity, z_1, z_2 : fluid height, g : gravity acceleration, α_1, α_2 = energy coefficient, ρ : density of the fluid, h_{IT} : total head losses, h_l : major head loss, h_{lm} : minor head loss.

The equation for h_l is [5]:

$$h_l = f \frac{L}{D} \frac{\bar{v}^2}{2} \quad (8)$$

where f : friction factor, L = pipe length, D = inside pipe diameter.

The equation for h_{lm} [5]:

$$h_{lm} = K \frac{\bar{v}^2}{2} \quad (9)$$

where K = minor head loss coefficient.

The model of the system used in this work is shown in figure 1. Consider a horizontal pipe with 200 m in length and a diameter variable connected to a large deep reservoir of 15 m. At the end of the pipe there is a pump that pumps water at 20°C in the volumetric flow rate 0.02 m³/s. For this problem $p_1 = p_{\text{pump}}$, $p_2 = 0$, ie, $\Delta p = p_{\text{pump}}$, $\bar{v}_1 = \bar{v}$, $\bar{v}_2 \sim 0$, $K=1$, $\alpha_1=1,0$, $z_1=0$, $z_2=10$ m, $\rho=999$ kg/m³ e $\mu=1,0 \cdot 10^{-3}$ kg/(m.s).

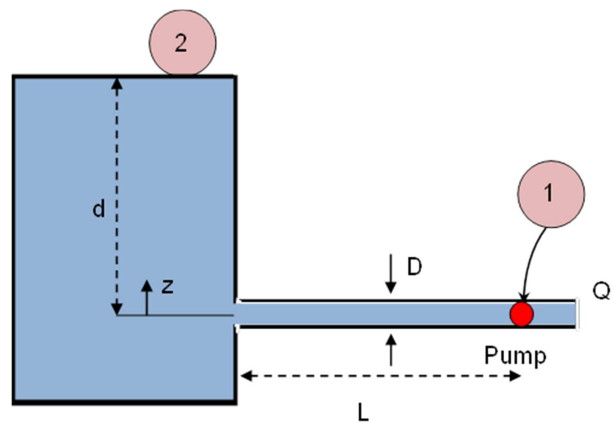


Figure 1. Designed pumping system containing one pump, one long pipe and one reservoir. The liquid considered is water at 20°C. Model based in the picture pg. 372 [5].

Replacing these values in (7) the new equation is:

$$\frac{\Delta p}{\rho} + \frac{\bar{v}^2}{2} - gd = f \frac{L}{D} \frac{\bar{v}^2}{2} + \frac{\bar{v}^2}{2} \quad (10)$$

Gauge pressure can be calculated by:

$$p_{pump} = \Delta p = \rho \left(gd + f \frac{L}{D} \frac{\bar{v}^2}{2} \right) \quad (11)$$

The velocity is found by:

$$\bar{v} = \frac{Q}{A} = \frac{4Q}{\pi D^2} \quad (12)$$

where Q: volumetric flow rate.

The Reynolds Number for flow in pipes is defined as:

$$Re = \frac{\rho \bar{v} D}{\mu} \quad (13)$$

where: ρ : viscosity of the fluid.

Briefly, the system designed in this article assumes the following settings, which will be inserted into the Python program script.

- L= 200 m,
- d= 15 m,
- Q= 0.02 m³/s,

- $\rho = 999 \text{ kg/m}^3$,
- $\mu = 1 \cdot 10^{-3} \text{ kg/(m. s)}$,
- $g = 9.81 \text{ m/s}^2$,
- $D = 25 \cdot 10^{-3}, 55 \cdot 10^{-3}, 95 \cdot 10^{-3}, 25 \cdot 10^{-2}, 55 \cdot 10^{-2}, 85 \cdot 10^{-2} \text{ m}$,
- $Rug = 10^{-5}, 10^{-4} \text{ and } 10^{-3}$.

3. Results

3.1. Testing the Program

The Colebrook equation was inserted into Python software to calculate the friction factor f and construct the Moody Diagram. Firstly, it was checked whether the values found in the equation were in agreement with those cited in the literature. The comparison is shown in table 1.

Table 1. Factor of friction presented in [14] for $Re = 10^6$ and simulated in Python using the Colebrook equation.

ϵ/D	Friction factor, f (Literature)	Friction factor, f (Python)
0.0*	0.0119	0.01165
0.00001	0.0119	0.01187
0.0001	0.0134	0.01344
0.0005	0.0172	0.01721
0.001	0.0199	0.01994
0.005	0.0305	0.03047
0.01	0.0380	0.03796
0.05	0.0716	0.07157

It can be observed in table 1 that the data obtained through programming in the Python of the Colebrook equation are very close to the real values, which demonstrates that the program can be used to perform other calculations with diversified values of ϵ/D and Re.

3.2. Statistical Comparison of Equations

The five equations of the turbulent regime were

Table 2. Pumping pressure calculation using Colebrook, Haaland, Blasius, Prandtl and Von Karman equations.

	Re	ϵ/D	D [m]	Δp Colebrook [Pa]	Δp Haaland [Pa]	Δp Blasius [Pa]	Δp Prandtl [Pa]	Δp Von Karman [Pa]
0	1017603	1,00E-05	0.025	78427450	77764056	65822971	77100663	53881886
1	462547	1,00E-05	0.055	1884770	1871898	1704557	1859026	1189663
2	267790	1,00E-05	0.095	271753	270078	263380	270915	214820
3	101760	1,00E-05	0.25	148197	148184	148177	148190	147540
4	46255	1,00E-05	0.55	147030	147030	147031	147030	147013
5	29930	1,00E-05	0.85	147006	147006	147006	147006	147004
6	1017603	0.0001	0.025	89041748	88378354	65822971	77100663	79754237
7	462547	0.0001	0.055	2026366	2000621	1704557	1859026	1691685
8	267790	0.0001	0.095	278451	276776	263380	270915	247472
9	101760	0.0001	0.25	148230	148210	148177	148190	147799
10	46255	0.0001	0.55	147031	147030	147031	147030	147018
11	29930	0.0001	0.85	147006	147006	147006	147006	147005
12	1017603	0.001	0.025	132162333	132162333	65822971	77100663	130172152
13	462547	0.001	0.055	2760090	2747218	1704557	1859026	2669984
14	267790	0.001	0.095	320313	319476	263380	270915	311103
15	101760	0.001	0.25	148469	148456	148177	148190	148303
16	46255	0.001	0.55	147034	147034	147031	147030	147028
17	29930	0.001	0.85	147007	147007	147006	147006	147006

Comparison between exact and approximate values is very important to understand how accurate the experiment or simulation was. For this, the percentage error equation is used:

$$\%Error = \frac{|\Delta p - \Delta p_{Colebrook}|}{\Delta p_{Colebrook}} * 100\% \quad (14)$$

The pumping pressure Δp for each of the four turbulent

equations: Haaland, Blasius, Prandtl and von Karman, is compared with the pressure calculated using the Colebrook equation, to verify the validity of each of these equations in

the values proposed diameter and roughness (table 3). This comparison used the data from table 2 and equation (14).

Table 3. Percentage error between the difference of the pressure obtained by friction factor from Colebrook's equation and by other equations specified in table.

i	Re	ϵ/D	D [m]	% Error Haaland	% Error Blasius	% Error Prandtl	% Error Von Karman
0	1017603	1,00E-05	0.025	0	16	1	31
1	462547	1,00E-05	0.055	0	9	1	36
2	267790	1,00E-05	0.095	0	3	0	20
3	101760	1,00E-05	0.25	0	0	0	0
4	46255	1,00E-05	0.55	0	0	0	0
5	29930	1,00E-05	0.85	0	0	0	0
6	1017603	0.0001	0.025	0	26	13	10
7	462547	0.0001	0.055	1	15	8	16
8	267790	0.0001	0.095	0	5	2	11
9	101760	0.0001	0.25	0	0	0	0
10	46255	0.0001	0.55	0	0	0	0
11	29930	0.0001	0.85	0	0	0	0
12	1017603	0.001	0.025	0	50	41	1
13	462547	0.001	0.055	0	38	32	3
14	267790	0.001	0.095	0	17	15	2
15	101760	0.001	0.25	0	0	0	0
16	46255	0.001	0.55	0	0	0	0
17	29930	0.001	0.85	0	0	0	0

4. Conclusion

The Python program lives up all expectations to calculate all values needed to get to the pumping pressure, which was the goal in this program. Even when the equation is not linear like equation (2), the friction factor can be calculated with values very close to those found in the literature, as shown in Table 1.

The Table 3 can be analyzed based on the usage limit of each one of the equations already explained in section 2. Consider the percentage error using the Haaland equation to calculate pumping pressure. According to the theory, there is a slight difference between the Haaland and Colebrook equation, so it was this percentage could be expected to be very low. The calculation, according to this table showed values from 0 to 1%, really proving that it could be using the Haaland equation to calculate the pumping pressure with the values used relative roughness, diameter, length, flow rate used in this simulation.

If the friction factor is calculated using the Blasius equation, only where the Reynolds number was less than 10^5 is that the error percentage has a null value. That is, for values of lines 0, 1, 2, 6, 7, 8, 12, 13, and 14, the percentage error presented very high values, and thus, the Blasius equation could not be used.

Notice the rows 0 through 5 in the Prandtl percentage error column. The values range from 0 to 1, as expected, since the Prandtl equation is limited for low roughness.

The von Karman equation should be used to calculate the friction factor when Reynolds number and roughness have high values, i.e. expected that the equation is more efficient on lines 12 through 17, where the percentage error varied very little from 0 to 3.

For a system similar to that of figure 1, it is recommended to use the Haaland equation for the Reynolds number and relative roughness similar to that used in this work. For a

high Re, the three equations: Blasius, Prandtl and von Karman present pumping pressures higher than that calculated by the Colebrook equation, therefore, it is better not to use them, except in two cases: with low roughness the pumping pressure can still be calculated using the Prandtl equation or with high roughness, the von Karman equation.

For other reservoir sizes, pipe length or diameter, it is recommended to redo this simulation and evaluate which friction factor equations could be used to calculate the pumping pressure with a low relative error.

References

- [1] MENEZES, Nilo Ney Coutinho. Introdução à programação Python. Algoritmos e lógica de programação para iniciantes. Novatec. 2010.
- [2] COSTA, Daniel Gouveia. Administração de redes com scripts. Bash Script, Python e VBScript. Brasport. 2 ed. 2010.
- [3] COELHO, Flávio Codeço. Computação Científica com Python. Uma introdução a programação para cientistas. Petrópolis, RJ. 2007.
- [4] SCARPIN, Lucas Mendes; Trindade, Bruno Martins. Redimensionamento de um sistema de bombeamento de etanol para o setor de carregamento de uma usina sucroalcooleira. Revista Engenharia em Ação UniToledo. Revista Engenharia em Ação UniToledo, Araçatuba, SP, v. 01, n. 01, out./dec. 2016. pp. 116-129.
- [5] FOX, Robert W; PRITCHARD, Philip J; MCDONALD Alan T. Introduction to fluids mechanics. 8ª edition. John Wiley & Sons, Inc. 2011.
- [6] MUZZO, Luiz Eduardo, PINHO, Diana, LIMA, Luiz Eduardo Melo, RIBEIRO, Luís Frólén. Accuracy/Speed Analysis of Pipe Friction Factor Correlations. International Congress on Engineering and Sustainability in the XXI Century. INCREaSE, pp 664-679, 2019.

- [7] GAMA, Cléber Henrique de Araújo, de SOUZA, Vladimir Caramori Borges, CALLADO, Nélia Henriques. Analysis of methodologies for determination of the economic pipe diameter. RBRH vol. 24. Porto Alegre, aug. 2019.
- [8] MINHONI, Renata T. de A., PEREIRA, Francisca F. S., da SILVA, Tatiane B. G., CASTRO, Evanize R., SAAD, João C. C. The performance of explicit formulas for determining the Darcy-Weisbach friction factor. Eng. Agric. vol. 40 no. 2 Jaboticabal, apr., 2020.
- [9] COSTA, José Nilton de Abreu, de CASTRO Marco Aurélio Holanda, COSTA, Luís Henrique Magalhães, BARBOSA, João Marcelo Costa. New formula proposal for the determination of variable speed pumps efficiency. RBRH, vol. 23, Porto Alegre, 2018.
- [10] TAGWI, Dayton. New Approaches to the Determination of Minor Frictional Losses in Irrigation Systems. Bioresources Engineering School of Engineering University of KwaZulu-Natal Pietermaritzburg, dec. 2018.
- [11] HAMRAN K A. Simulations and measurements of friction in oscillating flow 2019 J. Phys.: Conf. Ser. 1266 012002. IOP Conf. Series: Journal of Physics: Conf. Series 1266, 2019.
- [12] SOUZA, Rodrigo Pumar Alves de. Cálculos de perda de carga para seleção de uma bomba de alimentação de água de um gerador de vapor em uma unidade FPSO. Graduation project, Universidade Federal do Rio de Janeiro, Rio de Janeiro, aug. 2015.
- [13] SOUZA, Pedro Henrique A. I. de. Apresentação dos cálculos para seleção de bomba para sistema de reaproveitamento de água de poços artesianos. Graduation project, Universidade Federal do Rio de Janeiro, Rio de Janeiro, nov. 2014.
- [14] ÇENGEL, Yunus A.; CIMBALA, John M. Mecânica dos fluidos fundamentos e aplicações. 3 ed. 2013.
- [15] POPE, Stephen. B. Turbulent flows. Cambridge University Press. 2000.
- [16] CHADWICK Andrew, MORFETT John, BORTHWICK Martin. Hydraulics in civil and environmental engineering. 5. ed. CRC Press. 2013.
- [17] SINGH, Sarbit. Experiments in hydraulic engineering. Phi learning private limited. 2012.
- [18] LINDEBURG R., mechanical engineering reference manual for the pe exam. 13 ed. Professional Publications. 2013.
- [19] ZIEGLER, Franz. Mechanics of solids and fluids. Springer. 1991.