

---

# Assessment of Radioactive Concentrations in the Egyptian Natural Gas Grid and Their Relevant Impacts

S. U. EL-Kameesy<sup>1</sup>, H. M. Diab<sup>2</sup>, A. B. Ramadan<sup>2,3</sup>, O. R. Megahid<sup>3</sup>

<sup>1</sup>Department of Physics, Faculty of Science, Ain-Shams University, Cairo, Egypt

<sup>2</sup>Radiation Nuclear and Radiological Authority, Cairo, Egypt

<sup>3</sup>Department of Health and Safety, Midor, Ministry of Petroleum, Cairo, Egypt

## Email address:

samirkhamisy@yahoo.com (S. U. EL-Kameesy)

## To cite this article:

S. U. EL-Kameesy, H. M. Diab, A. B. Ramadan, O. R. Megahid. Assessment of Radioactive Concentrations in the Egyptian Natural Gas Grid and Their Relevant Impacts. *American Journal of Physics and Applications*. Vol. 4, No. 6, 2016, pp. 152-157.

doi: 10.11648/j.ajpa.20160406.13

**Received:** October 31, 2016; **Accepted:** November 17, 2016; **Published:** December 29, 2016

---

**Abstract:** The radioactivity concentrations of <sup>226</sup>Ra, <sup>232</sup>Th and <sup>40</sup>K in thirty samples representing the technically Naturally Occurring Radioactive Materials (NORM) in the Egyptian natural gas were investigated. The investigations were performed using a gamma ray spectroscopy technique. The obtained data were used to establish a data base for NORM concentrations during the different processing stages of natural gas and to estimate the associated radiation health hazard impacts. Great concern has been devoted to determine the specific activity of <sup>210</sup>Pb as it represents all daughters originating from <sup>222</sup>Rn that have relatively short half-lives. The samples were collected from the gas pipeline grid covering different areas in Egypt. Fifteen samples were taken from the gas pipelines, whereas the remaining samples were taken from the upstream facilities before pumping into the grid. The average activity concentrations of <sup>226</sup>Ra, <sup>232</sup>Th and <sup>40</sup>K were found to be  $16.2 \pm 1.5$ ,  $10.50 \pm 0.9$  and  $98.46 \pm 6.03$  Bq/kg for filter samples respectively. The corresponding average values for scale samples were  $37.28 \pm 3.1$ ,  $45.7 \pm 2.6$  and  $621.79 \pm 9.2$  Bq/kg. The sludge samples gave average values of  $14.97 \pm 1.94$ ,  $9.99 \pm 1.48$  and  $112.82 \pm 5.82$  respectively. These values are below the recommended international limits. In contrary, the average values of activity concentrations of waste water were found to be  $4.895 \pm 0.51$ ,  $2.241 \pm 0.3$  and  $31.852 \pm 2.31$  Bq/kg respectively. The obtained results indicate that <sup>226</sup>Ra content is higher than the recommended values for domestic or drinking water. Additionally, high values of the specific activity of <sup>210</sup>Pb were found in both deposits and filter samples.

**Keywords:** NORM, Egyptian Natural Gas, Scales, Sludge, Waste Water, Absorbed Dose Rate, Radium Equivalent Activity, Gamma Index

---

## 1. Introduction

Earth's crust contains Naturally Occurring Radioactive Materials (NORM) at measurable concentrations. The sources of most NORM are <sup>226</sup>Ra, <sup>232</sup>Th and <sup>40</sup>K. These isotopes are naturally present in subsurface formations from which oil and natural gas are produced. Radium-226 and radium-228 are the main radionuclides of concern in NORM wastes which are produced from the decay series of <sup>238</sup>U and <sup>232</sup>Th. Other radionuclides are those produced from the decay of <sup>228</sup>Ra and <sup>226</sup>Ra. radioactive isotopes such as uranium-238, radium-228 and radon-222 are dissolved in very low concentrations during normal

reactions between water and earth constituents such as rock. The water existed with underground oil and natural gas has usually considerable amounts of radionuclides formed during the prolonged periods of water/rock contact [1]. The isotope of radium which is slightly soluble can be mobilized in the liquid phases of formation and transported to the surface in the produced water stream. Hence, dissolved radium does exist in produced water or precipitated in scales, sludge and processing equipment. Radium concentrations are generally reported as a picocuries / gram (pCi/L) of water or air. A picocurie

equals 2.22 disintegrations- per- minute (dpm). The contaminated water, scales, sludge and equipment cause exposure problems when the equipment is taken off-line for maintenance, repair or replacement. Moreover, the produced natural gas and its processing equipment also may be contaminated with a thin film of lead-210 which is deposited onto the interior surfaces [2 - 5].

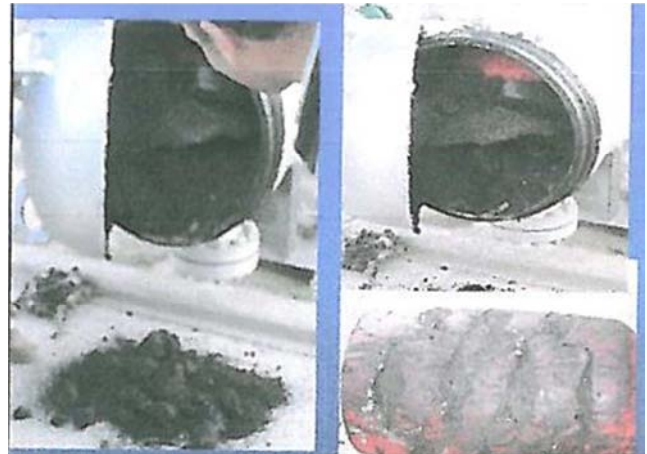
Although the presence of NORM in oil and natural gas are well known for more than 8 decades, however the health risks were not considered before the mid of 1980s when the industry and regulators realized that NORM concentration is more than it was expected. Therefore, the radiation dose level could be more than that from natural background. This means that workers in the field of oil and natural gas production and the general public users may be exposed to radiation emitted from NORM contaminated equipment from streams. This means that the magnitude of radiation risk requires an assessment of the exposure dose during stages of production, management and uses [6-9].

It is worth to mention that, although NORM concentration in oil and natural gas is usually low, the level of concentration may become enhanced during the process of extraction and production. These include water, scales, sludge and begging debris [10], [11]. Accordingly, uncontrolled work activities involving NORM can lead to undesirable exposure to radiation hazard and therefore cause a risk to human health. This risk can be reduced by the adaptation of appropriate controls to the presence of NORM. In addition, a best working practice at NORM areas has to be considered to protect the workers in these areas from the hazards of ionizing radiations. This is usually achieved by controlling the exposure and by the use of adequate dose measurements. However, the environmental impact and subsequently the radiation effect on the public are mostly reduced by controlled disposal of NORM/waste and by the adaptation of emission controls [12].

Accordingly, the aim of the present work is to study the radioactivity for different trajectory zones of the Egyptian Natural Gas Grid to assess the possible associated health hazards and establishing a radiological baseline for any corresponding future studies.

## 2. Experimental Technique and Measurements

Fifteen sludge samples were collected during the cleaning and maintenance processes of the pipelines of national natural gas grid. Other 15 samples are taken from upstream plant facilities. These include samples of scales, filters and waste water. A photograph of a sludge sample taken during the cleaning of the interior surface of pipeline and a photograph of scales taken from a tank upstream plant facilities are shown in fig. 1 and fig. 2 respectively.



*Fig. 1. An example of the sludge sample.*



*Fig. 2. An example of the scales sample.*

The sediment samples (sludge, scales) were dried in an oven at 105°C for 24 h, crushed and sieved by 1mm sieve to remove mechanical waste. Then, the samples were weighted and packed in cans (100 cm<sup>3</sup>) for six weeks to reach secular equilibrium where the rate of decay of the progeny is equal to that of the parent. The water samples were acidified with 20 mm of hydrochloride at the rate of 20 ml as soon as possible after sampling to prevent adsorption of radio-nuclides in the bottles.

In order to analyse the water samples five litres of it were evaporated to one litre, and put into 100 ml marinelli beakers. These marinelli beakers were previously washed, rinsed with a dilute sulfuric acid and dried to avoid any contamination. Hereafter, they firmly sealed for at least four weeks to ensure that no loss of radon occurs there by ensuring a state of secular equilibrium to be reached between radium isotopes and their respective daughters.

### 2.1. Radioactivity Measurements

A closed end-coaxial Canberra N-type HPGe detector of vertical configuration (model GC 5019); with 40% relative efficiency and 2.0 keV energy resolution at 1.33 MeV photons was used to detect the gamma ray single spectrum. To reduce gamma-ray background, a cylindrical lead shield

of thickness 5cm was used. The lead shield contained an inner concentric copper cylinder (1mm thick) to prevent x-ray and Bremsstrahlung radiation production. The spectra were analysed by means of maestro program. The energy and efficiency calibration of the spectrometer were performed using an analogous calibrated can (100 cm<sup>3</sup>) which contains well known standard sources (<sup>22</sup>Na, <sup>60</sup>Co and <sup>226</sup>Ra) along with a standard solution of HCl. Quality control and quality assurance of the measurements using international atomic energy agency (IAEA) reference materials (soil 6, IAEA-362) have been applied.

The specific activity of <sup>226</sup>Ra was calculated on the basis of the energy transitions of 295.1 keV (19.2%) and 352.0 keV (37.1%) of <sup>214</sup>Pb, 609.3 keV (46.1%), 1120 keV (15.1%) and 1764.5 keV (15.9%) of <sup>214</sup>Bi. The corresponding specific activity of <sup>232</sup>Th was calculated making use of the energy transition 338.4 keV (12.4%) and 911.2 keV (25.9%) of <sup>228</sup>Ac, 583.19 keV (40.4%) and 2614 keV (35.6%) of <sup>208</sup>Tl and 238.63 keV (43.3%) of <sup>212</sup>Pb.

The activity concentrations of <sup>40</sup>K were obtained from the 1460.7 keV (10.67%) gamma line. The activity concentration is based on the following equation [13];

$$A = N_p / (\lambda \eta \times m) \quad (1)$$

where  $N_p$  is the net count rate,  $\lambda$  is the abundance of the gamma line in radionuclide,  $\eta$  is the detector efficiency of the specific  $\gamma$ -ray and  $m$  is the mass of the sample (kg).

The combined uncertainty of activity can be calculated by the following equation;

$$\frac{U^2(A)}{A^2} = \frac{U^2(N_p)}{N^2} + \frac{U^2(\eta)}{\eta^2} + \frac{U^2(\lambda)}{\lambda^2} + \frac{U^2(m)}{m^2} \quad (2)$$

The reproducibility of the results and the stability of the counting technique were checked by conducting triplicate analysis on the collected samples.

## 2.2. Gamma-Ray Radiation Hazard Indices

As the activity of <sup>226</sup>Ra or any of its daughters represents about 98.5% of that of <sup>238</sup>U. Therefore, the contribution from <sup>238</sup>U could be replaced with any of them. The gamma radiation hazards due to the specific radionuclides were assessed by four different indices; the radium equivalent ( $Ra_{eq}$ ), the absorbed dose rate (D), the annual effective dose rate (AEDE) and gamma index.  $Ra_{eq}$  can be calculated according to the following equation [14];

$$Ra_{eq} = A_{Ra} + 1.43 A_{Th} + 0.077 A_K \quad (3)$$

Where,  $A_{Ra}$ ,  $A_{Th}$  and  $A_K$  are the activity concentrations of <sup>226</sup>Ra, <sup>232</sup>Th and <sup>40</sup>K, in Bq/kg respectively. The  $Ra_{eq}$  is related to the external gamma dose and internal dose due to radon and its daughters. The maximum value of  $Ra_{eq}$  must be less than 370 Bq/kg.

Other hazard parameter is the representative level index  $I_{\gamma}$  was calculated using the formula [14];

$$I_{\gamma} = \frac{A_{Ra}}{150} + \frac{A_{Th}}{100} + \frac{A_K}{1500} \quad (4)$$

The gamma index ( $I_{\gamma}$ ) is in the permissible range as long as it is less than unity.

The absorbed dose rate (D), (Gy/h) was calculated using the following equation [15];

$$D = 0.462A_{Ra} + 0.604A_{Th} + 0.0417A_K \quad (5)$$

The annual effective dose equivalent has been calculated using the following equation [15];

$$AEDE = \text{Dose Rate (nGyh}^{-1}) \times 8760 \text{ h} \times 0.7 \text{ Sv Gy}^{-1} \times 0.2 \times 10^{-6} \quad (6)$$

Where the 0.7 Sv /Gy and 0.2 constants are the conversion factors from absorbed dose in air to effective dose and the outdoor occupancy factor respectively [16].

## 3. Results and Discussion

As shown in table (1), the average activity concentrations of <sup>226</sup>Ra, <sup>232</sup>Th and <sup>40</sup>K were found to be  $16.206 \pm 1.5$ ,  $10.506 \pm 0.9$  and  $98.46 \pm 6.03$  Bq/kg for filter samples respectively. For scales samples the corresponding average values are  $37.28 \pm 3.01$ ,  $45.7 \pm 2.6$  and  $621.79 \pm 9.5$  Bq/kg. Also, the corresponding average values for sludge samples are  $14.97 \pm 1.94$ ,  $9.99 \pm 1.48$  and  $112.82 \pm 5.82$  Bq/kg respectively. Furthermore, the corresponding average activity concentrations of the collected water samples are  $4.895 \pm 0.51$ ,  $2.241 \pm 0.33$  and  $31.852 \pm 2.31$  Bq/kg respectively.

The obtained results showed that the activity concentration for <sup>226</sup>Ra in the investigated water samples is at least five times higher than the max concentration for <sup>226</sup>Ra (0.6 Bq/kg) HECE,1995) [18] or in other words it is higher than the safety value (1 Bq/kg) recommended for <sup>226</sup>Ra in water (Surbeck, 1995) [17] and the U. S. EPA maximum contaminant level for drinking water (5 pCi/l = 0.185 Bq/L) for total dissolved radium [20], [21]. Some previous works [8] have considered that production water with concentrations below 10 Bq/l (<sup>226</sup>Ra) and / or 10 Bq/l (<sup>210</sup>Pb) may be treated as exempt. Also, from table 1 it is shown that the values of the specific activities of <sup>210</sup>Pb for different samples are high in particular in the gas filter samples lying in the range from 250 to 1664 Bq/kg with an average value  $260 \pm 0.21$  Bq/kg.

It is well known that rivers water, lakes are vulnerable to oil and gas related effluent discharges, gas flare and other anthropogenic activities, which may enhance the natural activity levels of the area and human exposure. As a consequence the obtained values of the activity concentration of the natural radioactive isotopes for water samples in particular <sup>226</sup>Ra deserve special interest to establish the necessary precautions to overcome that complexity.

**Table 1.** Activity concentrations (Bq/ kg) of the measured radionuclides in the samples collected from upstream plant (USP) and pipelines of natural gas grid (NG).

Code	Ra-226 Bq/kg	Th-232 Bq/kg	Pb-210 Bq/ kg	K-40 Bq/ kg
USPF1	10.40 ± 0.9	10.50 ± 0.9	300.54 ± 0.09	98.40 ± 5.7
USPF2	12.88 ± 1.2	12.55 ± 0.5	250.58 ± 0.10	115.28 ± 8.1
USPF3	8.03 ± 1.1	8.47 ± 1.3	322.610 ± 0.14	102.70 ± 4.3
USPF4	16.4 ± 1.5	10.339 ± 2.6	279.06 ± 0.23	91.373 ± 3.1
USPF5	23.19 ± 2.1	9.151 ± 3.1	1664 ± 0.25	99.570 ± 7.4
USPF6	26.34 ± 2.2	11.856 ± 1.2	906.93 ± 0.03	88.177 ± 9.2
Average for filter	16.206 ± 1.5	10.506 ± 0.9	620 ± 0.21	98.46 ± 6.03
USPSC-1	37.20 ± 3.1	45.33 ± 0.5	34.99 ± 1.23	621.79 ± 5.2
USPSC-2	38.90 ± 2.8	48.13 ± 3.1	39.13 ± 2.44	635.24 ± 12.2
USPSC-3	35.76 ± 3.1	43.64 ± 4.2	30.21 ± 6.35	608.35 ± 11.3
Average for scales	37.286 ± 3.1	45.7 ± 2.6	34.77 ± 5.63	621.793 ± 9.5
NGS1	13.71 ± 1.5	6.89 ± 0.75	70.59 ± 10.23	133.30 ± 9.2
NGS2	16.33 ± 1.3	9.93 ± 0.9	73.52 ± 9.25	147.69 ± 7.8
NGS3	11.19 ± 7.1	3.88 ± 0.5	67.76 ± 6.54	118.98 ± 6.4
NGS4	13.84 ± 1.2	11.31 ± 0.1	77.76 ± 6.45	89.20 ± 5.1
NGS5	16.02 ± 1.3	12.43 ± 0.98	72.79 ± 7.36	91.57 ± 0.3
NGS6	17.04 ± 1.5	12.85 ± 0.98	80.73 ± 4.69	93.60 ± 4.2
NGS7	14.31 ± 2.3	11.66 ± 10.2	71.57 ± 2.64	98.31 ± 3.6
NGS8	11.56 ± 1.8	9.48 ± 0.78	56.06 ± 2.87	105.33 ± 3.5
NGS9	11.37 ± 1.3	10.21 ± 0.96	62.68 ± 3.68	81.70 ± 3.6
NGS10	14.78 ± 0.8	8.701 ± 0.6	39.73 ± 3.20	64.09 ± 3.6
NGS11	10.57 ± 0.9	8.20 ± 0.7	63.76 ± 6.34	60.43 ± 2.9
NGS12	19.23 ± 1.2	15.72 ± 1.3	72.46 ± 9.45	123.98 ± 5.3
NGS13	17.82 ± 1.2	8.95 ± 0.75	54.68 ± 3.47	163.29 ± 11.3
NGS14	22.20 ± 3.5	13.80 ± 1.3	86.80 ± 4.36	172.14 ± 7.3
NGS15	14.65 ± 2.3	5.85 ± 0.65	69.77 ± 1.56	148.72 ± 6.6
Average for sludge	14.97 ± 1.94	9.99 ± 1.48	68.04 ± 2.01	112.82 ± 5.82
	Bq/l	Bq/l	Bq/l	Bq/l
USPW1	5.91 ± 0.7	2.93 ± 0.4	35.94 ± 8.35	32.583 ± 0.1
USPW2	6.96 ± 0.9	2.94 ± 0.3	46.73 ± 6.54	35.68 ± 3.1
USPW3	4.90 ± 0.5	2.15 ± 0.25	28.31 ± 9.12	29.48 ± 4.3
USPW4	5.3 ± 0.4	2.60 ± 0.23	24.87 ± 5.78	27.56 ± 2.5
USPW5	3.4 ± 0.32	1.6 ± 0.35	34.11 ± 3.87	35.2 ± 3.5
USPW6	2.9 ± 0.26	1.23 ± 0.48	27.28 ± 3.56	31.34 ± 0.4
Average for water	4.895 ± 0.51	2.247 ± 0.33	32.87 ± 4.51	31.852 ± 2.31

Where; USPF is the upstream filter sample, USPSC is the upstream scales sample, NGS is the national gasgrid sludge

The reason for the high values is that Rn-222 and its daughters (Po-218, Pb-214, Bi-214 and Po-210) are short lived compared with Pb-210. Therefore Pb-210 deposits originating from Rn-222 appear in high concentrations due to the prolonged processing in all types of deposits in natural gas upstream facilities.

The experimental results of absorbed dose, annual effective dose, radium equivalent and gamma index for all the investigated samples are presented in table 2. The calculated  $Ra_{eq}$  activities of all samples are below the recommended value 370 Bq/kg. The average values for gamma index for all the investigated samples presented in table 2 are less than unity.

**Table 2.** Values of absorbed dose (D), annual effective dose (AEDE), radium equivalent ( $Ra_{eq}$ ) and gamma index ( $I_{\gamma}$ ) for all investigated samples.

Code	D(nGy/ h)	AEDE(mSv /y)	$Ra_{eq}$ ( Bq/ Kg)	$I_{\gamma}$
USPF1	15.250	0.187	32.99	0.119
USPF2	18.337	0.224	39.70	0.144
USPF3	12.232	0.150	26.43	0.096
USPF4	7.576	0.092	16.4	0.054
USPF5	10.713	0.131	23.19	0.077
USPF6	12.169	0.149	26.34	0.087
average	12.713	0.155	27.509	0.096
USPSC-1	70.494	0.864	149.899	0.557
USPSC-2	73.531	0.901	156.639	0.582
USPSC-3	68.247	0.836	145.008	0.540
Average	70.758	0.867	150.515	0.560

Code	D(nGy/ h)	AEDE(mSv /y)	Ra <sub>eq</sub> ( Bq/ Kg)	I <sub>yr</sub>
USPW1	5.858	0.071	12.608	0.045
USPW2	6.479	0.079	13.911	0.049
USPW3	4.791	0.058	10.244	0.036
USPW4	5.168	0.063	11.140	0.039
USPW5	4.005	0.049	8.398	0.031
USPW6	3.389	0.041	7.072	0.026
Average	4.948	0.060	10.562	0.038
NGS1	16.054	0.196	33.826	0.124
NGS2	19.700	0.241	41.902	0.153
NGS3	12.474	0.152	25.899	0.096
NGS4	16.944	0.207	36.881	0.132
NGS5	18.727	0.229	40.845	0.146
NGS6	19.537	0.239	42.622	0.152
NGS7	17.753	0.217	38.553	0.138
NGS8	15.458	0.189	33.226	0.121
NGS9	14.826	0.181	32.261	0.116
NGS10	14.756	0.180	32.157	0.114
NGS11	12.356	0.151	26.949	0.096
NGS12	23.549	0.288	51.256	0.184
NGS13	20.447	0.250	43.191	0.158
NGS14	25.769	0.316	55.188	0.200
NGS15	16.503	0.202	34.466	0.127
Average	17.657	0.216	37.948	0.137

## 4. Conclusion

The present results of NORM concentrations for samples collected from the Egyptian national gas grid and upstream processing plant and the associated calculated parameters can be used to drive the following conclusions:

- Sludge samples taken from the upstream plant showed the highest radioactivity concentration with an average value of 37.28, 45.7 and 621.79 for <sup>226</sup>Ra, <sup>232</sup>Th and <sup>40</sup>K respectively.
- The value of radioactive concentration in waste water was found to be relatively high according to the safety value (1 Bq/l) recommended for <sup>226</sup>Ra in water which was attributed to the fact that radium-226 are partially dissolved in water. This has to be considered during disposal of this water to the outer environment to avoid contamination of different waters.
- Relatively high values of <sup>210</sup>Pb were detected in the water samples ranging from 24.78 to 46.73 Bq/l with an average values equal to 32.78 Bq/l.
- In general, it was noticed that NORM concentrations in all the investigated samples except water samples of the Egyptian natural gas grid are below the limits recommended by IAEA.
- Although the lower levels of radioactivity concentrations of <sup>226</sup>Ra, <sup>232</sup>Th and <sup>40</sup>K there exist corresponding high values of <sup>210</sup>Pb. Therefore, people engaged in gas industry, especially those working in maintenance and pipeline cleaning have to flow restricted work instructions and wear appropriate personal protective equipment's to avoid risk of internal contamination.

## References

- [1] E. Rowan, M. Angle, C. Kirby and T. Kraemer, "Radium Content of Oil- and Gas Field Produced Waters in the Northern Appalachian Basin" (USA): Summary and Discussion of Data, Scientific Investigations Report 2011-5135, USGS Reston, VA, United States, 2011.
- [2] F. A. Hartog, W. A. I. Knaepen, and G. Jonkers, "Radioactive lead: An underestimated issue, in Proceedings of the 1995 API and GRI Naturally Occurring Radioactive Material (NORM)" Conference, pp. 59-69 (API Publication 7104) Houston, USA, October 16-18, 1995.
- [3] F. A. Hartog, W. A. I. Knaepen, G. Jonkers, A. P. Schmidt, R. D. Schuiling, and P. F. J. Lancee, "Origin and Encounter of <sup>210</sup>Pb in E&P facilities", in Proc. 2nd International Symposium on the Treatment of Naturally Occurring Radioactive Material, Krefeld, Germany, pp.53-57, November 10-13, 1998.
- [4] A. P. Schmidt, "Naturally Occurring Radioactive Materials in the Gas and Oil Industry" Thesis, Geologica Ultraiectina, Mededelingen van de Faculteit Aardwetenschappen, University of Utrecht, the Netherlands, p. 144, 2000.
- [5] F. A. Hartog, G. Jonkers, A. P. Schmidt and R. D. Schuiling, "Lead Deposits in Dutch Natural Gas Systems", Society of Petroleum Engineers paper SPE68316-MS, 2001.
- [6] NRPB, NORM in the Oil and Gas Industries, Radiation at Work Series NRPB, 1999.
- [7] C. Organo and D. Fenton, "Radiological assessment of NORM industries in Ireland- Radiation doses to workers and members of the public", Radiological Protection Institute of Ireland, Dec. 2008.

- [8] IAEA, Radiation Protection and the Management of Radioactive Waste in the Oil and Gas Industry, Safety Series No. 34, ISBN 92-0-114003-7, 2003.
- [9] IAEA, Regulatory and management approach for the control of environmental residues containing naturally occurring radioactive material (NORM), IAEA-TECDOC-1484, 2004.
- [10] T. strand, "Handling And Disposal Of Norm In The Oil And Gas Industry", Norway, 1999.
- [11] Saudi Aramco Engineering Procedure (SAEP-0358) "Management of Technologically Enhanced Naturally Occurring Radioactive Material (NORM)", 2005.
- [12] K. P. Smith, D. L. Blunt, G. P. Williams, and C. L. Tebes, "Radiological Dose Assessment Related to Management of Naturally Occurring Radioactive Materials Generated by the Petroleum Industry" Environmental Assessment Division Argonne National Laboratory, 9700 South Cass Avenue, Argonne, 1996.
- [13] S. U. El-Kameesy, S. Y. Afifi, A. Hamid, Ali Ajeeb. "Elemental and Radioactivity Concentration of Stream Sediments in Abu-Rusheid, Nugrus Area-South Eastern Desert, Egypt", Amer. J. Phys. Appl., 3,6, 183-189, 2015.
- [14] J. Beretka, and P. J. Mathaw, "Natural Radioactivity of Australian Building Material, Industrial Wastes And By Products", Health Phys., 48, 87-95, 1985.
- [15] M. Al-Abyad, S. U. El-Kameesy, S. A. El-Fiki, M. N. Dahesh, "Radioactivity Levels and Dose Evaluation in Some Environmental Rock Samples From Taiz, Yemen", Global Journal of Physics, Vol. 4, No 1, 266-275, 2016.
- [16] UNSCEAR, "Exposure of the Public and Workers from Various Sources of Radiation", Report to General Assembly+, With Scientific Annexes, United Nation, New York, 2008.
- [17] H. SURBECK, The science of the total environment, 91, 173-174, 1995.
- [18] (HECS), Healthy Environments and Consumer Safety, Radiological Characteristics Guidelines, 1995.
- [19] Naturally occurring radioactive Materials (NORM) in produced water and oil-field equipment- an issue for the energy industry, USGS science for a changing world, September, 1999.
- [20] U. S. Environmental Protection Agency, A Preliminary Risk Assessment of Management and Disposal Options for Oil Field Wastes and Piping Contaminated with NORM in the State of Louisiana Peer Review Draft, Office of Radiation and Indoor Air, Washington, D.C, 1993b.
- [21] U. S. Environmental Protection Agency, Drinking Water Regulations and Health Advisories, EPA 822-R-94-001, Office of Water, Washington, D. C, 1994.