

A Cascaded Switched-capacitor AC-AC Converter with a Ratio of $1/2^n$

Jiachuan You^{1,2}, Qian Guo¹, Hui Cai¹

¹College of Mechanical and Electrical Engineering, China Jiliang University, Hangzhou, China

²Institute of Electrical Engineering, University of Chinese Academy of Sciences, Beijing, China

Email address:

840793478@qq.com (Jiachuan You), guoqian@cjlu.edu.cn (Qian Guo), caihui@cjlu.edu.cn (Hui Cai)

To cite this article:

Jiachuan You, Qian Guo, Hui Cai. A Cascaded Switched-capacitor AC-AC Converter with a Ratio of $1/2^n$. *Journal of Electrical and Electronic Engineering*. Vol. 5, No. 6, 2017, pp. 228-234. doi: 10.11648/j.jee.20170506.13

Received: November 9, 2017; **Accepted:** November 22, 2017; **Published:** December 28, 2017

Abstract: Based on the existing AC-AC switched-capacitor (SC) converters, this paper demonstrates a new cascaded AC-AC converter circuit topology with a ratio of $1/2^n$, which only consists of power switches and capacitors. The converter consists of multi-stage converters and the pre-and post-stage circuits are independent with each other. The principle of the topology and the formula of related parameters, including equivalent resistance, equivalent capacitance and switching loss, are deduced with the port network theory, thus the equivalent circuit is gained in this paper. After the theoretical analysis, simulation models and experimental prototype were established to validate the correctness of the circuit topology. Both simulation and experimental results have verified the effectiveness of the circuit topology and the correctness of the theoretical derivation.

Keywords: AC-AC Converter, Switch-capacitor, Cascade Circuit, Voltage Transformation Ratio

1. Introduction

The switched-capacitor (SC) converter has been an important research topic for many years, particularly in non-isolated DC-DC applications [1-4]. In recent years, the research of AC-AC conversion based on switched-capacitor has caught on. The literature [5-8] extended the principle of SC from DC-DC to AC-AC converters. Publication [5] described the switched-capacitor principle in AC-AC field firstly.

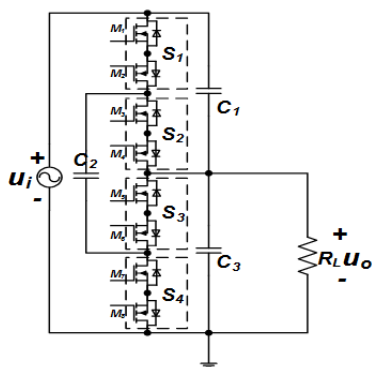


Figure 1. The single-stage circuit structure.

As is shown in Figure 1 [6], the circuit topology includes four bidirectional power switch groups which are connected in series and represented as $S_1 \sim S_4$, and three capacitors represented as $C_1 \sim C_3$. In this paper the circuit is called the single-stage circuit structure. The practical implementation of a bidirectional switch using 2 MOSFETs is shown in Figure 2 (R_{on} is the switch conduction resistance).

As the switching of power MOSFETs is controlled, the output voltage of all the capacitors with identical ratios of $1/2$ can be achieved. In a switching cycle, there are two states of the converter. In the first state the switch groups S_1 and S_3 are turned on and the capacitor C_1 is paralleled with C_2 . In the second state the switch groups S_2 and S_4 are turned on and the capacitor C_1 is in parallel with C_3 . The switch timing diagram of the switch groups can be seen in Figure 3 with the switching frequency of 100 kHz and duty cycle of 50%.

This converter can be operated as a step-down converter with the static gain of $1/2$. Its equivalent resistance is small enough and the efficiency is almost 95%. Experimental results verified the practicability of the switched-capacitor AC-AC converter. Literature [7] proposed an AC-AC direct static power converter aiming at providing a split-phase system from an AC single-phase voltage source. Literature [8] modified the behavior of the present switched-capacitor

AC-AC converter in each operation stage and showed that shortening the circuit by sacrificing the bi-directionality with 4 bi-directional switches instead of 8, resulted in a reduction of cost and size.

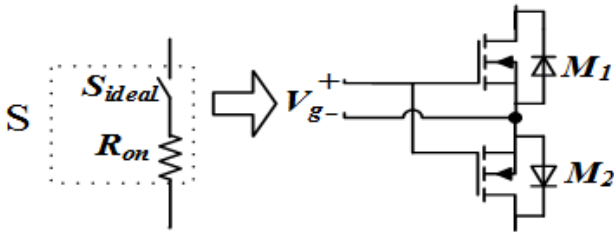


Figure 2. Bidirectional switch model and its practical implementation using two MOSFETs.

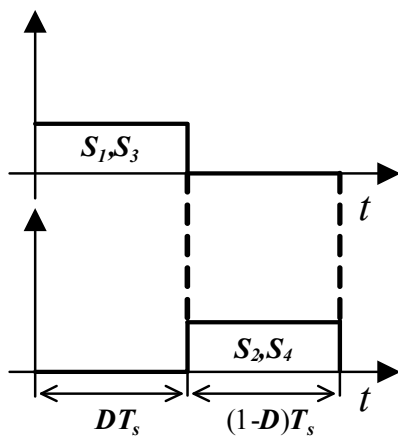


Figure 3. The drive waveform of the switch groups.

The literature [9, 10] proposed the cascaded switched capacitor for DC-DC power converter which also has some inspirations for this paper.

In this paper, inspired by the research mentioned above, a new cascaded switched-capacitor AC-AC converter based on the SC principle is proposed and investigated. The proposed converter is composed only of power MOSFETs and capacitors to achieve the step-down ratio of $1/2^n$ ($n=1,2,3,\dots$).

It has such advantages as high power density, small size, high efficiency, light weight, etc. More importantly it can realize the AC-AC Buck without the magnetic transformer. With the miniaturization of switching power supply, switched capacitor converters are used more widely in power electronic circuits and have very broad application prospects, such as the fields like the miniaturization of power chip design, PV modular design and new energy applications.

2. The Proposed Implement Method

Developed by the basic circuit unit in Figure 1, a new cascaded switched-capacitor converter with a ratio of $1/2^n$ is proposed. The cascaded circuit topology makes use of the same working principle as the circuit topology in Figure 1. It is realized by controlling the operation of power switches to achieve the stress voltages of capacitors in all stages which are equal to half of their input-side voltages respectively.

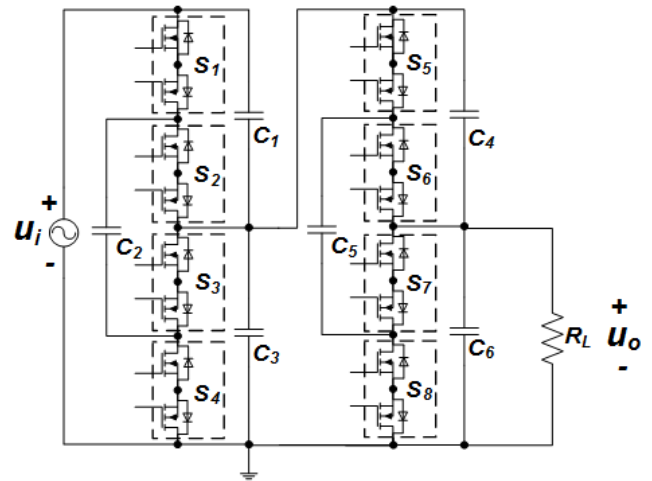


Figure 4. The SC AC-AC converter with the ratio of 1/4.

In Figure 1, when the input voltage U_i is applied across capacitors C_1 and C_3 , the voltages across all the capacitors are identical, being equal to $1/2$ of the input voltage U_i .

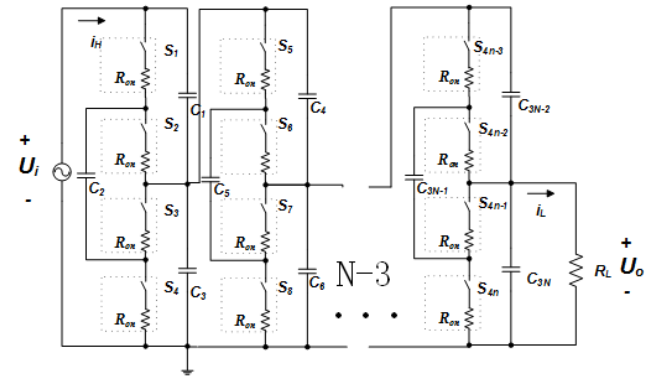


Figure 5. The SC AC-AC converter with the ratio of $1/2^n$.

The cascaded two-stage SC circuit is shown in Figure 4. The input of the second stage circuit is connected to the output of the first one. The voltages across all capacitors in the second stage of the Figure 3 (C_4, C_5 and C_6) are all identical, being equal to half of the voltages across the capacitors in the first stage and as a result, a fixed conversion ratio of $1/4$ can be achieved.

It can be seen that the SC principle is used for an N-stage SC converter circuit, as shown in Figure 5, a fixed conversion ratio of $1/2^n$ can be achieved.

3. Theoretical Analysis

3.1. Equivalent Resistance

The proposed single-stage circuit has an SC cell as shown in Figure 6 (a). Previous studies on DC-DC converters have demonstrated that this SC cell can be represented by an equivalent resistance, as illustrated in Figure 6 (b), which is calculated using (1) for different duty cycle values and (2) for a duty cycle of 50% [11, 12] (if the switching frequency become high enough, the value may change[13]). The model in Figure 6 (b) and Figure 6 (c) describes the equivalent

resistance of the SC AC-AC converter single-stage circuit 'seen' through its input and output side. Nevertheless, it can also be represented through its output side employing the equation defined in (3) [6].

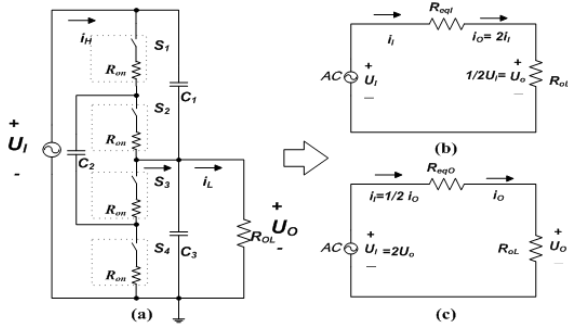


Figure 6. Equivalent resistance analysis of a single-stage circuit (b) Model 'seen' by input side (c) Model 'seen' by output side.

$$R_{eqI} = \frac{1}{f_s \cdot C} \cdot \frac{(1 - e^{-1/f_s \cdot 2 \cdot R_{on} \cdot C})}{1 - \left(e^{-(D)/f_s \cdot 2 \cdot R_{on} \cdot C} + e^{-(1-D)/f_s \cdot 2 \cdot R_{on} \cdot C} \right) + e^{-1/f_s \cdot 2 \cdot R_{on} \cdot C}} \quad (1)$$

$$R_{eqI(D=0.5)} = \frac{1}{f_s \cdot C} \cdot \frac{(1 + e^{-1/2 \cdot f_s \cdot 2 \cdot R_{on} \cdot C})}{1 - (e^{-1/2 \cdot f_s \cdot 2 \cdot R_{on} \cdot C})} \quad (2)$$

$$R_{eqO} = \frac{1}{4} \cdot R_{eqI} \quad (3)$$

In a single-stage circuit, the output-side voltage is 1/2 of the input-side voltage and the trunk current in the output side is twice the value of that in the input side if the power transmission efficiency is considered as 100%. When it comes to a multi-stage converter circuit, the output side in previous stage can be considered as the input side of the following stage. Thus the R_{eqO} of each stage is 1/4 of that in the previous stage. The model in Figure 7 describes the equivalent resistance of an N-stage SC AC-AC converter seen through the output side of the first stage. Equ.(4) presents the relation between the equivalent resistance $R_{eqO(N)}$ of an N-stage SC AC-AC converter and $R_{eqO(1)}$ of a single stage SC AC-AC Converter.

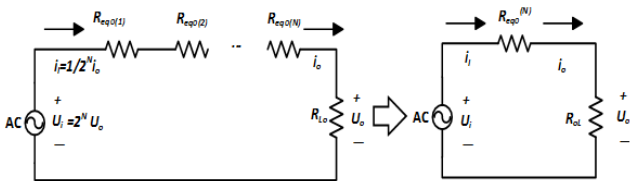


Figure 7. Equivalent resistance analysis of an N-stage circuit.

$$R_{eqO(N)} = \left(1 + \frac{1}{4} + \frac{1}{16} + \dots + \frac{1}{4^{(N-1)}} \right) R_{eqO(1)} \quad (4)$$

3.2. Equivalent Capacitance

The operation works as two equivalent capacitors, one in parallel with C_2 which has a value of DC and the other in parallel with C_3 which has a value of $(1-D)C$, as represented in Figure 8(a). The analysis of this electrical circuit (considering $D=0.5$ and three equal capacitors) enables an

equivalent capacitance to be found for the AC-AC converter when seen through the input side which is defined in (5) and has the configuration shown in Figure 8(b). The same capacitance can be represented by the output side shown in Figure 8(c), as given by (6) [6]. The equivalent capacitance allows the reactive power flow required by the AC-AC converter and its power factor to be estimated.

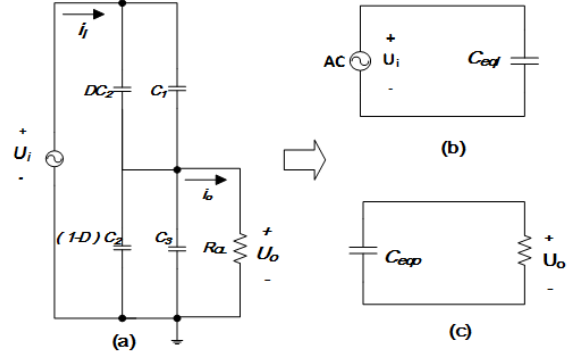


Figure 8. Equivalent Capacitance Analysis of a Single-stage Circuit (b) Model 'seen' by input side (c) Model 'seen' by output side.

$$C_{eqI(1)} = \frac{3}{4} C \quad (5)$$

$$C_{eqO(1)} = 3C \quad (6)$$

Equ. (7) can be obtained by (5) and (6):

$$C_{eqO} = 4C_{eqI} \quad (7)$$

In a single-stage circuit, the relation between the equivalent capacitance seen through the output side and that seen through the input side can be described as in (7). When it comes to a multi-stage circuit, it is true that the output side in previous stage is the input side of the following stage. Thus the value of the equivalent capacitance in each stage is 4 times of that in the previous stage. The equivalent capacitance of an N-stage converter circuit can be seen as a parallel connection of that in every stage. Equation (8) presents the relation between the equivalent capacitance of an N-stage SC AC-AC converter and that of a single-stage SC AC-AC converter when seen through the output side of the first stage.

$$C_{eqO(N)} = (1 + 4 + 16 + \dots + 4^{(N-1)}) C_{eqO(1)} \quad (8)$$

(9) can be obtained by (5) and (8):

$$C_{eqO(N)} = 3 \cdot (1 + 4 + 16 + \dots + 4^{(N-1)}) C \quad (9)$$

3.3 Switching Losses

The single-stage circuit employs bidirectional switches which are implemented by MOSFETs. The switching loss in one MOSFET due to its' parasitic capacitance is given by (10) and shown as P_{s11s} . C_{oss} is the output capacitance of a MOSFET, f_s is the switching frequency and v_s is the voltage across one switch defined by (11) (v_I being the input-side voltage and V_{pk} being the peak value of v_I). Equation (10) calculates the power supplied to the MOSFET capacitance in a switching period.

The average of the supplied power in all switching periods during one period of input voltage provides the total power supplied to the MOSFET capacitance, which is given by (12). As the single-stage circuit uses eight switches, the switching losses P_{sls} due to parasitic capacitances of 8 MOSFETs are expressed by (13). This equation demonstrates that increasing the switching frequency of the AC-AC converter consequently increases the switching losses [6]. An equivalent resistance R_{slo} that describes the switching losses of the AC-AC converter on the output side can be obtained from (14).

$$P_{sl1s} = \frac{1}{2} \cdot C_{oss}(v_s)^2 f_s \quad (10)$$

$$v_s = \frac{v_i}{2} = \frac{V_{pk}}{2} \cdot \sin(\theta) \quad (11)$$

$$P_{sl1s} = \frac{1}{2} \cdot C_{oss} f_s \cdot \frac{1}{2\pi} \cdot \int_0^{2\pi} \left(\frac{V_{pk}}{2} \right)^2 (\sin(\theta))^2 d\theta$$

$$= \frac{1}{16} \cdot C_{oss} f_s V_{pk}^2 \quad (12)$$

$$P_{sl8s} = 8 \cdot P_{sl1s} = \frac{1}{2} \cdot C_{oss} f_s V_{pk}^2 \quad (13)$$

$$R_{slo} = \frac{v_i^2}{P_{sl8s}} \quad (14)$$

$$P_{sl8s(N)} = \left(1 + \frac{1}{4} + \frac{1}{16} + \dots + \frac{1}{4^{N-1}} \right) P_{sl8s(1)}$$

$$= \frac{1}{2} \cdot \left(1 + \frac{1}{4} + \frac{1}{16} + \dots + \frac{1}{4^{N-1}} \right) C_{oss} f_s V_{pk}^2 \quad (15)$$

When it comes to an N-stage circuit, there are 4N groups of switches and correspondingly 8N MOSFETs. It can be obtained by equation (13) that the loss in MOSFETs of each stage is proportional to the V_{pk}^2 . Because the V_{pk} in each stage is de-escalated by the ratio of 1/2, the loss in MOSFETs of each stage decreases by the ratio of 1/4 from stage to stage. The total loss in MOSFETs in an N-stage circuit is defined by equation (15).

Thus, the equivalent resistance of an N-stage circuit seen through its output side is defined in (16) and (17).

$$R_{slo(N)} = \frac{v_i^2}{P_{sl8s(N)}} \quad (16)$$

$$R_{slo(N)} = \frac{1}{\left(1 + \frac{1}{4} + \frac{1}{16} + \dots + \frac{1}{4^{N-1}} \right) C_{oss} f_s} \quad (17)$$

3.4. Equivalent Circuit

The equivalent circuit of an N-stage circuit on the input side is shown in Figure 9 [6]:

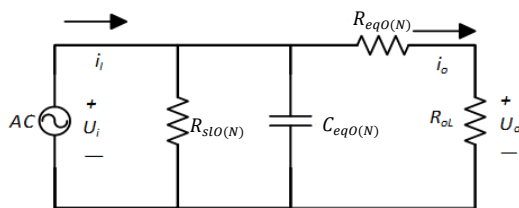


Figure 9. Equivalent circuit of an N-stage circuit.

$R_{slo(N)}$: parallel resistance that indicates the switching loss due to intrinsic capacitances of the MOSFETs;

$R_{eqo(N)}$: series resistance that indicates conduction loss in switches and capacitors;

$C_{eqo(N)}$: parallel capacitance that indicates reactive power flow required by AC-AC converter.

4. Simulation

Based on the theoretical basis, a series of simulations on the proposed switched-capacitor AC-AC converter with a ratio of 1/2ⁿ as shown in Figure 10 and Figure 11 are processed by SIMETRIX. The main parameters of simulation are presented in Table 1.

Table 1. Relevant simulation parameters.

Description	Values
Peak Voltage (V_{pk})	311.1V
Switching Frequency (f_s)	50kHz
Capacitors (C)	20 μ F
Duty Cycle	47%
MOSFET	IRFP460

The input voltage of the simulation curves shown in Figure 10 is 220V. The input voltage and the output voltage waveforms of a single-stage circuit, a 2-stage circuit, a three-stage circuit and a 4-stage circuit are shown in Figure 10 (a) to Figure 10 (d), respectively. It can be seen that the output voltages perfectly follow the shape of the input voltage and ideal peak values are $V_{pk}/2$, $V_{pk}/4$, $V_{pk}/8$ and $V_{pk}/16$, respectively.

A three-stage circuit is used for further analysis. The simulation waveforms of the input voltage and output voltages of all stages are shown in Figure 11, where the peak value of the input voltage is 311V and output voltage of each stage is half of that in the previous stage, which matches well with the theoretical analysis. A conversion ratio of 1/2 is achieved by the first-stage circuit, a conversion ratio of 1/4 is achieved by the two-stage circuit and a ratio of 1/8 is achieved by the third-stage circuit.

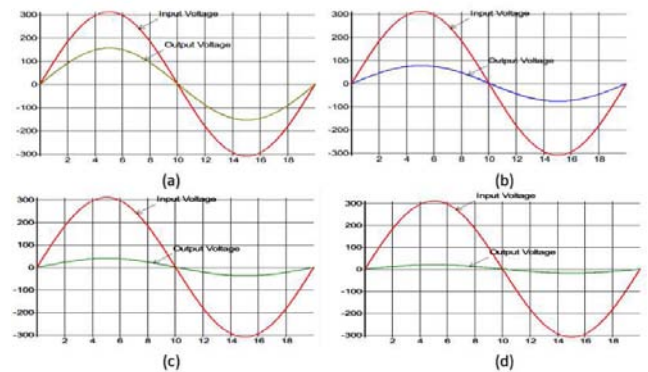


Figure 10. The simulation result of the proposed SC AC-AC converter.

It can be seen from the simulation result that the implement method of the N-stage AC-AC converter based on the SC principal is able to achieve a ratio of 1/2ⁿ.

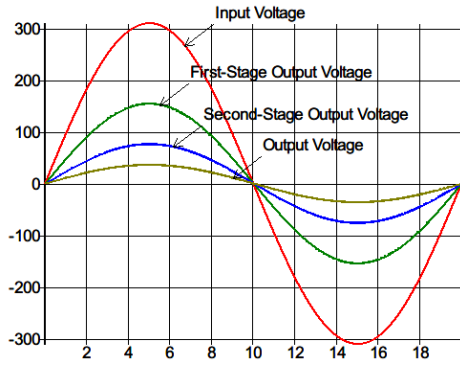


Figure 11. The simulation result of the proposed SC AC-AC converter of three-stage.

5. Experimental Results and Analysis

In order to verify the validity of the topology, a series of step-down prototypes were built in the laboratory. A simple drive circuit with a SG3525 PWM modulator is used to produce PWM signals to control the power switches. The circuit connections are shown in Figure 4 and Figure 5. The RMS of input voltage is 220V and the other parameters are consistent with the simulation parameters as shown in Table 1.

When the output terminal is connected across any of the three capacitors (C_1 , C_2 and C_3) in Figure 1, the experimental waveform is shown in Figure 12(a). It shows that $U_o \approx 1/2U_i$. When the input voltage is 220V, the voltage of each capacitor is close to 110V.

When the output terminal is connected with any of the three capacitors in the second part of the two-stage unit circuit in Figure 3 (C_4 , C_5 and C_6), the experimental waveform is shown in Figure 12(b). It shows that $U_o \approx 1/4U_i$. When the input voltage is 220V, the voltage of each capacitor is 54.9V.

When the output terminal is connected with any of the three capacitors in the third part of the three-stage unit circuit, the experimental waveform is shown in Figure 12(c). It shows that $U_o \approx 1/8U_i$. When the input voltage is 220V, the voltage of each capacitor is 27.69V.

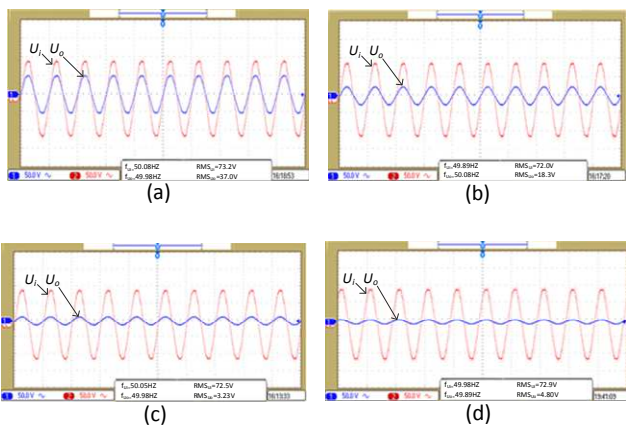


Figure 12. Experiment input voltage and output voltage results of (a) one-stage circuit; (b) two-stage circuit; (c) three-stage circuit; (d) four-stage circuit. (Since the actual voltage value exceeds the full scale, the voltage divider circuit is used to measure. The actual voltage is three times the display of oscilloscope.)

When the output terminal is connected with any of the three capacitors in the fourth part of the four-stage unit circuit, the experimental waveform is shown in Figure 12(d). It shows that $U_o \approx 1/16U_i$. When the input voltage is 220V, the voltage of each capacitor is 14.4V. All above experimental results are fully consistent with the simulation results.

5.1. Equivalent Resistance Analysis

The experimental results are consistent with the theoretical and simulation results. Meanwhile, the equivalent resistance in the output side of the proposed circuit can be defined. The equivalent resistance of an N-stage SC AC-AC converter seen through the output side can be calculated using (20), in which U_{NOL} is the no-load voltage of the Nth circuit, U_E is the voltage of the R_{eqO} , U_L is the load voltage of the Nth circuit and R_L is the load.

$$U_{NOL} = U_L + U_E \tag{18}$$

$$\frac{U_L}{R_L} = \frac{U_{NOL} - U_L}{R_{eqO}} \tag{19}$$

$$R_{eqO} = \frac{U_{NOL} - U_L}{U_L} \cdot R_L \tag{20}$$

When the input voltage is set as 220V, the experimental values of the equivalent resistance ($R_{eqO(1)}$) of laboratory prototype with the ratio of 1/2 are 1.32Ω ($R_{eqO(1)} \approx 1.32\Omega$), 1.64Ω ($R_{eqO(2)} \approx 1.64\Omega$) with the ratio of 1/4, 1.73Ω ($R_{eqO(3)} \approx 1.73\Omega$) with the ratio of 1/8, respectively.

The equivalent resistance increases with loads being larger and the increment become smaller with more stages in the circuit. As shown in Figure 13, the limit value is close to 1.77, which validates the Equ. (4). It proves that equivalent resistance between the pre-and post-stage circuits are independent with each other. A theoretical value curve is drawn compared with the experimental value curve as shown in Figure 13. The experimental value of the equivalent resistance is a little inferior to the theoretical value while they have the same variation. Considering the energy losses during the transmission and the differences on the device selection, the result is acceptable.

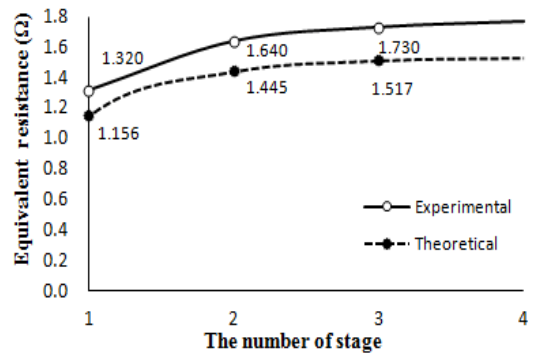


Figure 13. Variation of the equivalent circuit resistance.

5.2. Equivalent Capacitance Analysis

A three-stage circuit was established to illustrate the

capacitance in the converter. The following stage circuit can be seen as the resistive-capacitive load of the previous stage circuit. So there are phase differences between voltages and currents. The resistive component of Resistive-capacitive load equals to the post-stage circuit equivalent resistance and the load. And the capacitive component equals to the post-stage circuit equivalent capacitance. Through the power factor, the ratio between the resistive and capacitive component can be calculated. When the circuit load is fixed and the resistive component is hypothesized unchanged, the ratio of the capacitive component in different stages circuit can be calculated. Ideally, the increasing ratio of equivalent capacitance in different stages is 1:5:21 as presented in (8) and (9). Using the measured average power factor from the experimental circuits shown in Table 2, considering the resistance unchanged, the calculated ratio of equivalent capacitance is 1:4.5:17 in different stages. When the number of stages increases, the parallel resistance R_{sll} that indicates the switching loss due to intrinsic capacitances of the MOSFETs decreases thus the resistive part of the circuit decreases. Considering the influence of experiment error, the theoretical and experimental results are quite similar, which validates equations (8) and (9).

Table 2. The average power factors value of the experimental three-stage circuit.

First-stage	0.286
Second-stage	0.748
Third-stage	0.980
Load	1

5.3. Circuit Analysis

To verify the transfer efficiency of the circuit topology, experiments are conducted on the converter with the fixed load of 100Ω. The experimental power transmission efficiency between stages of a three-stage circuit is shown in Table 3, in which the input voltage ranges from 80V to 220V.

Table 3. Efficiency analysis of the experimental three-stage circuit.

Input voltage (V)	Efficiency of 1st-stage (%)	Efficiency of 2nd-stage (%)	Efficiency of 3rd-stage (%)	Overall efficiency (%)
80	91.98	91.28	88.74	74.50
100	91.58	92.18	88.53	74.74
120	91.68	90.34	90.33	74.81
140	92.22	90.51	89.61	74.79
160	92.29	91.06	88.89	74.70
180	91.80	90.77	89.57	74.63
200	91.79	90.43	89.60	74.37
220	91.86	90.52	89.79	74.66

The average transfer efficiency between the input and the output of the first-stage circuit is 91.9%, 90.9% for the second-stage circuit and 89.4% for the third-stage circuit. The overall average efficiency of the three-stage circuit is 74.65%. The losses caused by switches, which is needed for the capacitor charge/discharge process cause the efficiency drop when the number of stages increases. The efficiency of the single-stage circuit mentioned in [6] is 95% which leads to an

ideal overall efficiency of a three-stage circuit as 85% as the switching and conduction losses are neglected. Considering the differences of the power MOSFETs, capacitors and other electrical elements as well as the topology between [6] and this paper, the efficiency of the proposed circuit is expected to be higher with the improvement of elements and design.

With the change of circuit load, the output power also changes. The output power of the single-stage circuit is up to 1KW [6]. Because the circuit topology of the converter is a step-down circuit, when the circuit load is fixed, the output power of the circuit is reduced with the circuit stage increasing. The output power of the two-stage circuit is nearly 200W and the three-stage circuit is nearly 50W.

6. Conclusion

Based on the existing AC-AC switched-capacitor (SC) converter, this paper demonstrates a new cascaded AC-AC converter circuit topology with a ratio of $1/2^n$ which only consists of power switches and capacitors. The converter consists of multi-stage converters, and the pre-and post-stage circuits are independent with each other. By theoretical analysis, an equivalent circuit of the proposed N-stage converter is derived, which is composed of equivalent resistances and equivalent capacitances. Through the two-port network theory, the formulas of related parameters such as equivalent resistance, equivalent capacitance and switch loss are gained in the paper and proved by the experiments. Experimental results verified the correctness of the equivalent circuit and the feasibility of the converter.

The SC principle is extended to AC-AC static conversion to achieve a ratio that decreases exponentially by $1/2$ with the orders, which provides a wider output voltage range. The equivalent resistance of the circuit increases with more stages. But the increasing value of resistance is about to decrease exponentially. Therefore, the limit value exists, which leads to great significance of research and practical applications. This converter consists only of capacitors and switches. This method has greatly reduced the volume of the AC-AC converter and has potential application prospects in the low-power/ low-voltage field.

There are still lots of problems needed to be further researched and explored. The reduction of the equivalent resistance and switching losses on MOSFETs, improvement of the circuit efficiency and power rate are all further research focuses of this circuit topology.

Acknowledgements

In this paper, the research was sponsored by the National Natural Science Foundation of China (No. 51407173).

References

- [1] Seeman M D, Sanders S R. Analysis and optimization of switched-capacitor DC-DC converters [J]. IEEE Transactions on Power Electronics, 2008, 23(2): 841-851.

- [2] Ioinovici A. Switched-capacitor power electronics circuits [J]. IEEE Transactions on Circuit Systems, 2001, 1(3): 37-42.
- [3] Makowski M S, Maksimovic D. Performance limits of switched-capacitor DC-DC converters [C], 1995, 02: 1215-1221.
- [4] Y. Hinago and H. Koizumi, A Switched-Capacitor inverter using series/parallel conversion with inductive load, Industrial Electronics, 2012, 59: 878-887.
- [5] Lazzarin T B, Andersen R L, Martins G B et al. A 600W Switched-Capacitor AC-AC Converter for 220V/110V Applications [J]. IEEE Transactions on Power Electronics, 2012, 27: 4821-4826.
- [6] Andersen R L, Lazzarin T B, Barbi I. A 1kW Step-up/Step-down Switched-Capacitor AC-AC Converter [J]. IEEE Transactions on Power Electronics, 2013, 28(7): 3329-3340.
- [7] T. B. Lazzarin, M. P. Moccelini and I. Barbi, Split-phase switched-capacitor AC-AC converter, Power Electronics, 2015, 8(6): 918-928.
- [8] T. B. Lazzarin, M. P. Moccelini and I. Barbi, Direct Buck-Type AC/AC Converter Based On Switched-Capacitor, in COBEP, 2013, 230-235.
- [9] S. Xiong, et al., A family of exponential step-down switched-capacitor converters and their applications in two-stage converters, IEEE. Trans. Power Electron, pp.1870-1880, Apr. 2014
- [10] M. Uno and K. Tanaka, Unregulated interface converter based on cascaded switched capacitor converters for supercapacitors in alternative battery applications IEEE PEDS, pp.579-586, 2011.
- [11] Kimball J W, Krein P T. Analysis and Design of Switched Capacitor Converters [A]. Applied Power Electronics Conference and Exposition [C], 2005, 3: 1473-1477.
- [12] Kimball J W, Krein P T, Cahill K R. Modeling of Capacitor Impedance in Switching Converters [J]. IEEE Power Electronics Letters, 2005, 3: 136-140.
- [13] S. Ben-Yaakov, and M. Evzelman, Generic and unified model of switched capacitor converters, Proc. of IEEE Energy Conversion Congress and Exposition (ECCE) 2009, S9-1b, pp. 3501-3508, Sep. 2009.