

# Conceptual framework of a Solar PV based high voltage Battery charging strategy for PHEVs and EVs

**Mohammad Saad Alam**

Lead Systems Engineer- MagnetiMarelli Holdings of North America Inc (FIAT GROUP SpA)

**Email address:**

hybridvehicle@gmail.com

**To cite this article:**

Mohammad Saad Alam. Conceptual Framework of a Solar PV Based High Voltage Battery Charging Strategy for PHEVs and EVs. *American Journal of Electrical Power and Energy Systems*. Vol. 2, No. 6, 2013, pp. 137-143. doi: 10.11648/j.epes.20130206.13

---

**Abstract:** With the emergence of plugin hybrid electric vehicles (PHEVs) and electric vehicles (EVs) in the automotive market, the rate of the demand for electric power supply may be higher than the projected level. Distributed power generation is a feasible solution to balance the demand and supply of the power industry. In this work, a conceptual model of a solar photovoltaic (PV) based distributed generation system is proposed for charging the PHEVs and EVs. Outline of the overall system is developed with details of the background and feasibility analysis through hardware in the loop experiment of the proposed strategy.

**Keywords:** Solar PV, Electric Vehicle, High Voltage Battery, Charger

---

## 1. Introduction

The electric power supply industry is being deregulated into a "competitive electricity market" wherein the power system is being allocated into competitive generating and distributing groups, which are all linked through the transmission grid [1]. The random nature of consumer demand leads to uncertainty in forecasting demand, and hitches are compounded at peak demand periods. Endeavors to balance the proportion of the power supply and demand in peak hours, strain the power system with a risk of vulnerable to most disturbances [2]. The demand load on any power grid must be matched by the supply to it and its ability to transmit that power [1-3]. Peak power is required at times of day when high levels of demand are expected (e.g., hot summer afternoons with huge demand for air conditioning). On top of the peak power management, the electric power industry is expecting another challenge of meeting the charging demand of plugin hybrid (PHEV) and electric vehicles (EV) [3]. Automotive pundits are forecasting that 10-20% of vehicles on the road will be PHEVs and EVs by 2025 [4]. The contemporary establishment of the power generation is not capable of handling the charging needs of even 5% of vehicles and power demands at peak times can lead to blackouts [5-6]. Smart grid is emerging as a potential solution to manage and enhance the efficiency and reliability of the existing electric power generation,

transmission and distribution set up [6]. However, Smart grid will heavily rely on micro grids to meet the peak power demands locally before rustling the power from the power distribution system [7]. The solar PV System has an appropriate output profile with the peak demand time which can be utilized to meet the charging needs of the growing numbers of PHEVs and EVs [3]. Further, in the absence of the PHEV's and EV's charging requirements, the generated power can be fed into Smart grid to further facilitate the peak power management. Implementing solar technology with the automotive industry will also be an earnest progression towards preserving the environment. The matter of charging the batteries of the vehicle, however poses major implications for the future [8-10]. Having a solar powered charging station set up at a wide range of locations, however can change the considerations of users that are unwilling to buy a hybrid/electric car as a result of lack of affordable charging options.

The conceptual lay out of the proposed solar PV based charging station entails 6 kW micro grid including twenty four 240W solar panels, a compatible MPPT charge controller, a 240/210/280V inverter, and SAE™ J1772 compatible Electric Vehicle Supply Equipment (EVSE). Further details will be elaborated in the following sections of the manuscript.

This paper consists of 7 sections. The background of the existing PHEVs and EVs charging principles, schemes, standards, developments and challenge will be covered in

brief in section II. Section III and IV comprises the problem formulation and the conceptual lay out of the solar PV based charging station, respectively. Further, a case study of an on board high voltage battery charging for PHEVs and EVs through the proposed solar PV based charging strategy will be performed in section V, followed by cost analysis in section VI. Finally, the conclusion is outlined in section VII.

## 2. Background

The Society of Automotive Engineers (SAE) in coordination with the Original Automotive Equipment Manufacturers (OEMs) and National Electrical Manufacturers Association (NEMA) have standardized two levels of charging namely Level 1 and Level 2 and SAE™ J1772 as a standard for EVSE [11-12].

The Level 1 scheme is based on the conventional residential and commercial standard power supply of 120VAC, 15Amp/ 20 Amp (12 Amp/ 16 Amp useable) and is being implemented through an extension cord scheme with an on-board charging system [11-12]. However, Level 1 charging is a time consuming method as it is capable of delivering a maximum of only 1.44kW. This method is not the best solution to the PHEVs and EVs charging needs but definitely is important for emergency situations as it has ‘Portable Spare Tire’ approach [11-12]. On the other hand,

Level 1 allows interface to electrical outlets in compliance with the NEC - Article 625 [13].

Currently, the primary charging method for EVs is Level 2 which requires a 240VAC, single-phase, 40-Amp branch circuit with an on-board charging module. Level 2 schematic is hard-wired to home wiring system and requires a permanent private residential installation. Level 2 charging operation can be further categorized based on the mode of charging as inductive and conductive equipment. The popular EVSEs are conductive equipment which have “pin and sleeve” type assembly [11-12]. The inductive scheme is based on the inductive transfer of energy to the high voltage battery of the vehicle without any physical contact and is meant only for EVs and not PHEVs.

For universalizing the EVSEs, SAE™ J1772 standards committee facilitates the guideline for EVSEs manufactured by OEMs or their affiliated supplier companies [11-12]. EVSE can be defined as a physical link for networking the electric power supply grid to the on-board chargers of PHEVs and EVs. SAE™ J1772 endorse the hardware, electric, and operational requirements for the conductive charging method use for PHEVs and BEVs with a comprehensive inclusion of everything that associates with the charging system [11-13]. AC Level 2 may be utilized at home, workplace, and public charging facilities. In summary, the charging scheme appropriate for usage with electrical ratings is listed in Table 1.

*Table 1: Charge method Electrical ratings (North America) [11-15]*

Charge Method	Supply AC Voltage (V)	Maximum Current(Amp)	Circuit Breaker rating (Amps)
AC Level 1	120 V, 1-phase	12 A/16 A	15 A (minimum)/20 A
AC Level 2	208-240 V, 1-phase	≤ 80 A	Per NEC 625

As a counterpart of commercial gas stations, Level 3 or fast charging method is being installed at few locations in USA. Level 3 has an off board charging system of 60 to 150 kW with 480VAC, three-phase circuit with an estimated charging time of 10-20 minutes to achieve 40-55% of the state of the charge (SOC) of the on-board high voltage battery [14-15].

## 3. Emerging Need and System Requirements of a Charging Station

The aim of the solar PV based charging strategy for PHEVs and EVs is to explore the potential of solar energy as an alternative and/or as a supplement to address the surge in power demand for the charging provisions of PHEVs and EVs. There exists a choice between the isolated or grid connected charging stations. From feasibility and customer’s convenience perspective, a grid connected solar PV charging station is being considered in this work. However, the solar PV based PHEV and EV charging setup is modular in nature and can be implemented as an isolated entity or in conjunction with renewable or existing power

generation sources as hybrid power system.

The fundamental issue to address is to predict the energy requirement of the high voltage battery bank of PHEVs and EVs, the frequency of charges, and the number of vehicles being served. For analysis purpose we are considering an exemplary electric vehicle very similar to the commercially available 2012 Nissan Leaf EV and/or 2012 Chevy Volt PHEV. It is also assumed that with Level 1 charging scheme, not more than 2 vehicles will be charged from sun rise to sun set on a typical sunny day.

Before accessing the required energy by the high voltage battery pack of an EV, it is beneficial to perform the following analysis. Assuming the battery is made of 48 modules, and each module contains 4 cells; two of which are parallel, to give a total of about 345V [16-17]. The battery compounds are spinel  $LiMn_2O_4$  that can deliver high energy density, and is cheaper and less toxic than  $LiCoO_2$  which brings the specific energy density of 140 Wh/kg [16-17]. Further, a three minute driving cycle sample is taken at 25°C to get a feel for how much maximum energy would be used by the EV, assuming the vehicle is being driven by a driver weighing 200 pounds or less. The velocity of the vehicle vs. the time is plotted in

Figure 1 and the relevant energy consumed is tabulated in Table II.

Table II: Energy Required by EV

Interval (seconds)	Energy (J)	Energy (W-hr)
0 to 5	0	0
5 to 11	229850	63.85
11 to 23	66789	18.55
23 to 27	428720	119.09
27 to 87	995100	276.42
87 to 102	-27518	-7.64
102 to 107	0	0
107 to 111	278580	77.38
111 to 151	273080	75.86
151 to 160	-37193	-10.33
160 to 175	36852	10.24
175 to 180	-4599.7	-1.28
Total Energy	= 2239660 J	= 622 W-hr

In forward motion, the energy used,  $E_f$ , can be calculated through equation 1, assuming the average velocity over the

$$E_f(\text{sgn}[\text{brakeapplied}]) = .3 \left( \frac{1}{2} m V_{avg}^2 - D F_{t_{avg}} \right) (\text{sgn}[\text{brakeapplied}]) \quad (2)$$

Where  $E_r$  is the energy recovered in joules and  $Dis$  the distance EV will travel over the course of braking, and  $F_{t_{avg}}$  is the average of the total drag force minus  $m \frac{dv}{dt}$ . If we only consider  $E_f$  &  $E_r$  as our energy loss and gain and neglecting the other energy loss factors, with the illustrated driving cycle amplified to 30 minutes, the consumption of energy would be 6.22kWh used. That is only 26% of the 24kWh battery capacity found in the EV. The other energy consumption factors which were not included could easily have elevated the consumption to over 30% for a 30 minute drive. The highest recommended state of charge (SOC) should be around 80%; thus, dropping the total capacity to around 19kWh. Up to 80% depletion is recommended as maximum use before the EV must be recharged (24kWh\*.8 = 19.2 and 19.2kWh\*.8=15.36kWh is the practical high voltage battery capacity can deliver). Moreover, to examine the maximum driving range EV can deliver within the safe range of battery usage (using the driving cycle example) of 3788 meters (2.35miles) is the total distance was covered during the trip. For 15.36kWh capacity  $\frac{3790m}{15.36kWh} = 93590m \approx 58miles$ . Note, 15.36kWh/58miles  $\approx 264Wh/mile$  Therefore, in order to reach the 100 miles range EV need 26.6kWh usable energy capacity. In order to realize the required energy prediction the discharging and charging power limits vs. the drivable state of the charge (SOC) is plotted for a typical EV High voltage Li-ion battery in Figure 2. Now, a charging set up is need to be developed that can address the requirement of the EV/PHEV charging system as calculated above. A solar PV charging system is being proposed in the next section. The

distance,  $V_{avg}$ , with parameters as air density,  $\rho = 1.18\text{kg/m}^3$ , frontal area,  $A_f = 2.4\text{m}^2$ , coefficient of drag for an A segment small car,  $C_d = .28$  [16-17].

$$E_f = D[\text{sgn}[V_{avg}]](mg(C_o + C_1 V_{avg}^2) + \frac{\rho}{2} C_d A_f V_{avg}^2) + m \frac{dv}{dt} \quad (1)$$

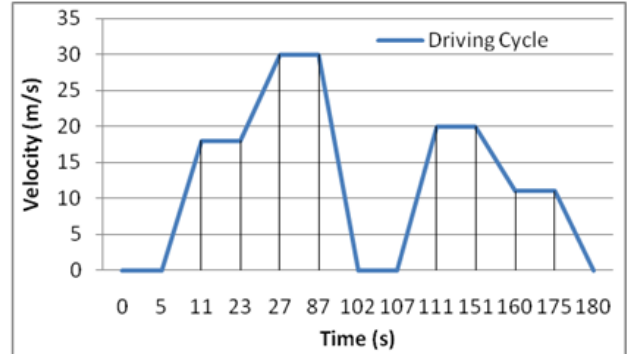


Fig. 1: The graph illustrates a short drive cycle for a span of 3 minutes.

This is a well-known fact that, what makes PHEVs and EVs exceptional is the ability to regenerate an average of approximately 30% of the energy that can be recovered during braking and can be calculated as [16-17].

main charging power source will be Solar PV arrays. In case of the unavailability of the required charging power, necessary power will be pulled from the grid.

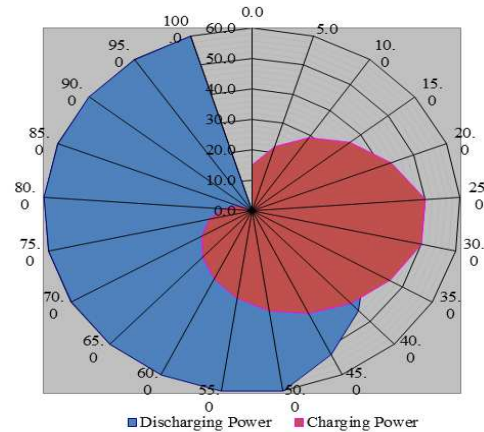


Fig. 2: Discharging and Charging Power Limits Vs State of the Charge (SOC) of the High Voltage Battery

### 4. Conceptual Model of a Solar PV Based Charging Station

In the propose charging system, DC power generated from the PV arrays will be fed to the converter and then the rectified power will be utilized to charge the High Voltage (HV) battery pack of EVs. A generic case study is performed to charge a 16 kW-hr High voltage battery pack, very similar to commercially available PHEV like Chevy Volt [18-19]. Also, possible loads of an EV like the Nissan

Leaf's 24 kW-hr lithium battery were reviewed. It was assumed that the EV or PHEV being charged has not a dead battery or with 0%SOC and thus, determined that this system could handle the load independently. The block diagram of the charging station is shown in Figure 3.

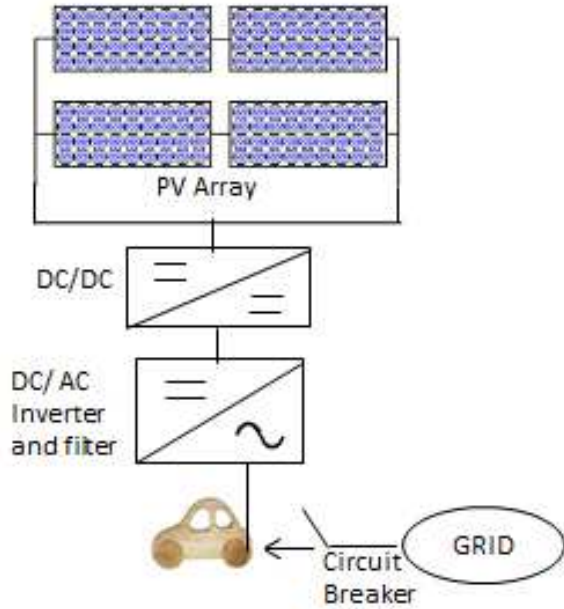


Fig. 3: Block diagram of the proposed PV based EV charging model

The EV/PHEV charge process should start as per the sequence described in the following flow chart of Figure 4.

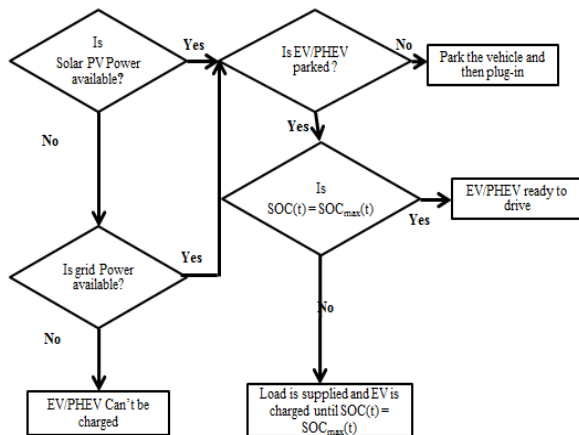


Fig. 4: Flow chart outlining the overview of the PHEV/EV charging sequence.

After the EV/PHEV is parked, the Solar PV power or the power from the grid in case of the unavailability of the power from Solar PV arrays like during night time will charge the high voltage battery till the SOC reached to its maximum value or the person unplugged the EVSE. To analyze the proposed lay out a case study is performed and reported in the next section.

### 5. Case Study of HV Battery Charging For PHEVs and EVs

For a parking lot location in Michigan, USA, the annual solar radiation profile obtained through weather data analysis [20-22] is plotted in Figure 5 and the daily solar irradiance for a typical day of June is plotted in Figure 6.

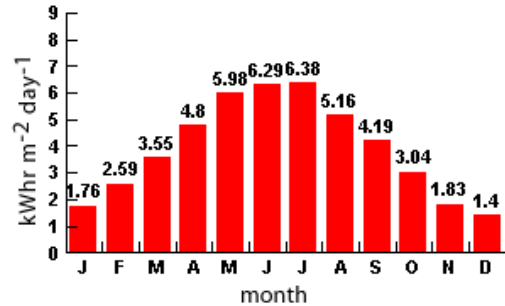


Fig.5: Annual Solar radiation profile [20-21]

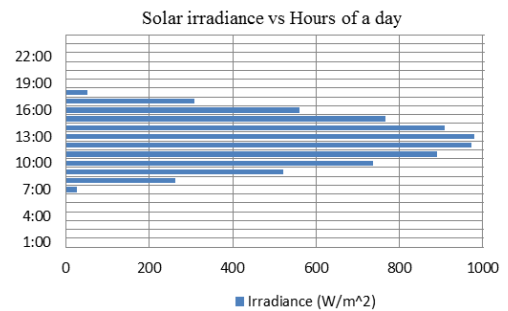


Fig. 6: Daily solar radiation profile on a typical day of June 2012 [21-22]

Installing the Solar PV system at an appropriate location is a key factor in determining the output efficiency. It is evident from Figure 6 that the operational solar irradiance is available between 9 AM – 4 PM. Also, as Level 1 charge takes 6-7 hours for 50 %SOC for a typical EV, a convenient and optimal choice for an EV charging station would be the parking lot of the driver's work place. The charging set up in the parking lot should be free from tree or building shadows and the panels must be installed facing south with a 42.9 degree tilt angle for maximum achievable efficiency [23-25].

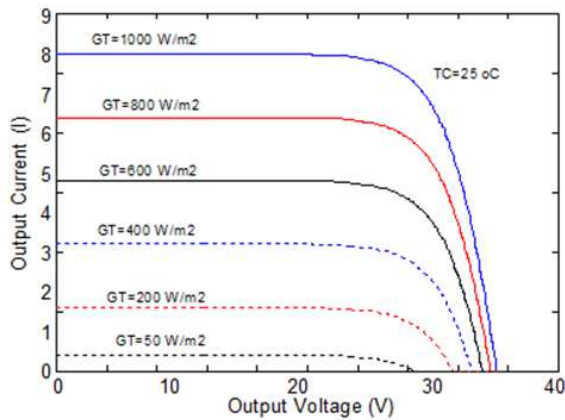
The optimal choice for the solar PV module is achieved through a compromise on the cost and the requirement and Trina Solar TMS-240PA05 modules are being selected for the proposed charging set up [26]. These modules consist of 240W panel, with a maximum voltage and current of 30.6V and 7.84Amps respectively with claimed module efficiency of 14.7%. The Parameters of TMS-240PA05 are tabulated in Table III [26] and the I-V curve is plotted in Figure 7.

Compatible MPPT charge controllers are being installed for achieving maximum power efficiency and two arrays are being designed with 12 modules in each array. The selected inverters are Fronius IG Plus 11.4-1 UNI inverters [27]. These inverters have an efficiency of 96.2%. The inverters have a Maximum Power Point Tracking input

voltage range of 230-500Vdc, a nominal input current of 31.4Amp. The output has a 60Hz nominal frequency output, with a THD of <3%, and an output power factor of 1. Rest of the required electrical components selected for the charging set up are NEC approved and the charging setup meet the entire local, state and federal safety codes.

**Table III: Parameters for TMS-240PA05 PV Module**

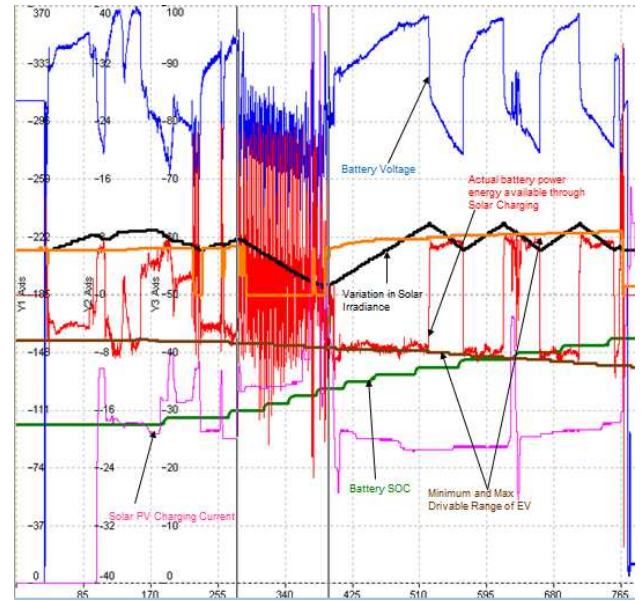
Parameter	Values
Peak Power Watts- $P_{MAX}$ (W)	240
Power output Tolerance (%)	0/+3
Maximum Power Voltage- $V_{MPP}$ (V)	30.6
Maximum Power Current- $I_{MPP}$ (A)	7.84
Open Circuit Voltage- $V_{OC}$ (V)	37.5
Short Circuit Current- $I_{sc}$ (A)	8.38
Temperature Coefficient of $P_{MAX}$ (%)	-0.45%/°C
Temperature Coefficient of $V_{OC}$ (%)	-0.35%/°C
Temperature Coefficient of $I_{sc}$ (%)	0.05%/°C



**Fig. 7:** I-V curves for TMS-240PA05 PV Module at 25°C

The charging of the EV for this case study is performed through hardware in the loop (HIL) system and the charging process follow the steps as elaborated in the flow chart in Figure 4.

Level 1 charging set up was performed through HIL at 25°C ambient temperature and varying solar irradiance profile of Figure 6 plotted from real weather data. The EV is charged from an SAE™ J1772 compatible EVSE for 6 hours from 9:30 AM to 3:30 PM. The charging started at 13% SOC and at 3:30 PM, when EVSE is unplugged, observed SOC was 67%, which will give an approximate 45-50 miles non-highway drive. The battery voltage, actual battery power available, battery SOC, solar PV charging current, variation in solar irradiance including clouding effect and the minimum and maximum drivable range of the EV are plotted in Figure 8. A disturbance in the middle of the charging can be observed which arise due to the switching of Air conditioning and accessories for some time to replicate a real world scenario.



**Fig. 8:** Plot of solar irradiance, and various EV charging parameters

Assuming an average 40-50 miles being driven on a typical week day, the per cent contribution of the proposed solar PV charging scheme and the power drawn from the grid for EV charging for the whole year is calculated through NREL’s Hybrid Optimization Model for Electric Renewables [28] tool and the available average annual solar irradiance (as plotted in Figure 5) tabulated in Table III. For a single EV/PHEV, the proposed solar PV charging schemes is capable of providing 76% of the charging demand. This is a significant achievement though at high initial setup cost. The cost analysis, payback period and gain margin is presented in the next section.

**Table IV: Power production from Solar PV and power pulled from grid.**

Charging	kWh/yr	% provision
Solar PV System	7567	76
Grid	2389	24
Total	9956	100

## 6. Cost analysis

The total solar PV charging system cost includes the 24 solar PV modules; two grid tied inverter, 24 MPPT charge controllers, supplies, mounting racks, and setup costs. The initial cost of the system is approximately \$19,560, reduced to \$13,692 due to a 30 % incentive. The incentive amount will be a rebate from Consumers Energy’s “Experimental Advanced Renewable” program [29]. With a 12 year contract, through this program, the commercial suppliers can be paid \$0.45/kWh or \$0.375/kWh. A rate of 10 cents per Kilowatt hour with 2% inflation for the next 20 years is computed. RET-Screen@[30] was used to analyze the overall cost of the proposed solar PV charging system and the estimated payback period is plotted in Figure 9.

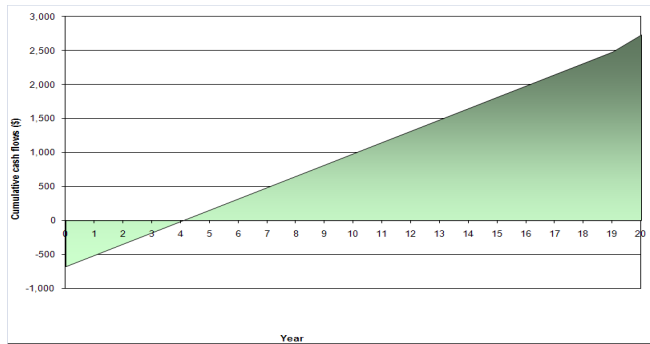


Fig. 9: Payback period of the proposed Solar PV charging System

The analysis estimated that with a capacity factor of 13.8%, the charging system would deliver 7567 Kwh of electricity annually, contributes to 76% of the EV charging requirements. The remaining 24% of the charging demand will be fulfilled from the grid. The base case for electricity rates were determined by the maximum monthly kWh cost of electricity over the last two years, with a 10% annual addendum with an estimated electricity rate of 13cents /kWh and an annual inflation rate of 2.0% for the next 20years. It will take approximately four years to start profiting off the design as shown in the cumulative cash flow diagram in figure 9 as payback period.

Though the initial set up cost is high but with the environmental benefits, state incentives, profitable after 4 years, significantly no maintenance cost and provision of the charging power during peak demand time, this would be the best scenario.

## 7. Conclusion

Solar PV charging system is a viable technology with initial cost constraints but profitable in the reasonable payback period. With the constant increase in the power demand, strained transmission and distribution systems and power market deregulation and structuring, the added demand due to the growth of EVs/ PHEVs can easily be addressed through the proposed solar PV based charging set up. The case study for a PHEV/ EV vehicle, very similar to commercially available Chevy Volt and Nissan Leaf depicted favorable results. At peak hours the system can charge the battery to approximately 67% SOC, enough for daily commute. Also, the proposed strategy contributes to 76% of the charging demand for the whole year and only 24% of the charging demand is met through grid. Additionally this 76% charging demand is met without causing any environmental disturbance. Thus, the overall proposal deemed effective and successful.

## References

- [1] M. Shahidehpour, H. Yamin and Z.Y. Li, "Market Operations in Electric Power Systems," John Wiley & Sons, Inc., New York, 2002.
- [2] S.M. Amin, "U.S. grid gets less reliable [The Data]," *IEEE Spectrum* vol. 48, Issue: 1, 2011.
- [3] Escudero-Garzás et al, "Fair Design of Plug-in Electric Vehicles Aggregator for V2G Regulation," *IEEE Transactions On Vehicular Technology*, vol. 61, no. 8, Oct. 2012, pp. 3406-3419.
- [4] TJ McCue, "Electric-Drive Vehicle Sales Forecast at 3.8 Million Annually." <http://evworld.com/news.cfm?newsid=29463> accessed April 2013
- [5] J. Paserba, P. Kundur, "Guest editorial - Power grid blackouts remembering and fighting grid failures," *IEEE Power and Energy Magazine*, vol. 4, Issue: 5, pp. 16-21, 2006.
- [6] S. M. Amin and B. F. Wollenberg, "Toward a smart grid: Power delivery for the 21st century," *IEEE Power and Energy Magazine*, vol. 3, No. 5, pp. 34-4, 2005.
- [7] H. Lund, "Large-scale integration of optimal combinations of PV, wind and wave power into the electricity supply," *J. of Renewable Energy* Vol. 31, 2006, pp: 503-515.
- [8] N. Watrin, R. Roche, H. Ostermann, B. Blunier, and A. Miraoui, "Multi physical Lithium-Based Battery Model for Use in State-of-Charge Determination," *IEEE Transactions on Vehicular Technology*, vol. 61, no. 8, Oct. 2012, pp. 3420-3429.
- [9] R. Castro, R. E. Araújo, J. P. F. Trovão, P. G. Pereirinha, P. Melo, and D. Freitas, "Robust DC-Link Control in EVs With Multiple Energy Storage Systems," *IEEE Transactions On Vehicular Technology*, vol. 61, no. 8, Oct. 2012, pp. 3553-3565.
- [10] G. Byeon et al, "Energy Management Strategy of the DC Distribution System in Buildings Using the EV Service Model," *IEEE Transactions On Power Electronics*, vol. 28, no. 4, April 2013, pp. 1544-1554.
- [11] SAE J1772, SAE Electric Vehicle and Plug in Hybrid Electric Vehicle Conductive Charge Coupler, published 10/15/2012, Society of Automotive Engineers Standards [http://standards.sae.org/j1772\\_201210/](http://standards.sae.org/j1772_201210/) accessed April 2013
- [12] NIST Special Publication 1108, NIST Framework and Roadmap for Smart Grid Interoperability Standards, Release 1.0\* January 2010.
- [13] NEC Article 625, A\_NEC\_625\_2008.pdf, National Electric Hand Book, 2008, pp.:971
- [14] Level 3 charger - NFPA catalog April 2013
- [15] M. Kintner-Meyer, "Smart Charger Technology for Customer Convenience and Grid Reliability", May 2009.
- [16] A. Ballboul, M. Dughlas, H.A. Chisht, "Interconnection Challenges of Plug-in Hybrid / Electric Vehicles to the Smart Grid," project reported submitted for Hybrid Vehicle Course, Wayne State Univ, May 2010
- [17] Gene Liao, "Advance Battery Systems for Hybrid Electric Vehicles" January 2010.
- [18] Nissan LEAF.pdf, Sept 2011. [www.Nissan.com](http://www.Nissan.com) accessed April 2013

- [19] Chvy Volt.pdf, 2012, <http://www.chevrolet.com> accessed April 2013
- [20] Honsberg; Bowden. PVCDROM<<http://pvcdrom.pveducation.org/index.html> >. accessed April 2013
- [21] *National solar radiation database*<<http://rredc.nrel.gov>>accessed April 2013
- [22] National Climatic Data Center, National Environmental Satellite, Data, and Information Services (NESDIS) [online].accessed April 2013
- [23] F. Farret, and M. Simões.*Integration of Alternative Sources of Energy*.Wiley-IEEE Press, 2006.
- [24] T. Tan, "A Model of PV Generation Suitable for Stability Analysis," *IEEE Trans.on Energy Conversion*, vol. 19, no. 4, pp. 748-755, 2004.
- [25] M.S. Alam, and A.T. Alouani, "Dynamic modeling of photovoltaic module for real-time maximum power tracking," *J. of Renewable Science and Energy*, AIP, NY, vol. 2, no. 3, 2010.
- [26] TMS-240PA05Whole Sale Solar. Whole Sale Solar. <<http://www.wholesalesolar.com/>>.accessed April 2013
- [27] Fronius IG Plus 11.1-1 UNi- <[www.fronius.com/cps/rde/xchg/SID-177ECB63.../2714\\_1483.htm](http://www.fronius.com/cps/rde/xchg/SID-177ECB63.../2714_1483.htm)>accessed April 2013
- [28] Hybrid Optimization Model for Electric Renewables (HOMER) software package : <http://www.nrel.gov/homer/>accessed April 2013
- [29] Experimental Advanced Renewable Program, Consumers Energy: <http://www.consumersenergy.com/content.aspx?id=1801>.accessed April 2013
- [30] RETScreen software<<http://www.retscreen.net/ang/home.php>> accessed April 2013