

# Diversity of Insect Pollinators in Gozamin District of Amhara Region, Ethiopia

Manaye Misganaw<sup>1,\*</sup>, Girma Mengesha<sup>2</sup>, Tesfaye Awas<sup>1</sup>

<sup>1</sup>Ethiopian Biodiversity Institute, Addis Ababa, Ethiopia

<sup>2</sup>Wondo Genet College of Forestry and Natural Resources, Shashemene, Ethiopia

## Email address:

manaye9@gmail.com (M. Misganaw), tesfayeawas@gmail.com (T. Awas), gutgirma@gmail.com (G. Mengesha)

\*Corresponding author

## To cite this article:

Manaye Misganaw, Girma Mengesha, Tesfaye Awas. Diversity of Insect Pollinators in Gozamin District of Amhara Region, Ethiopia. *American Journal of BioScience*. Vol. 8, No. 5, 2020, pp. 123-131. doi: 10.11648/j.ajbio.20200805.11

**Received:** August 12, 2020; **Accepted:** August 25, 2020; **Published:** September 14, 2020

**Abstract:** Pollination is one of a valuable ecosystem services in the maintenance of biodiversity and ensures the survival of plant species. Therefore, Insect pollinators' diversity and their role in the ecosystem are not sufficiently recorded; thus, conducting assessment of their diversity and roles helps to recognize the economic and ecological value of insect pollination, and potential impacts of the loss of insect pollinators. Therefore, the overall aim of this study was to assess and identify insect pollinators' diversity and frequently visited plant species in cropland and natural habitat of the study area. Transect sampling and direct field observation was used to collect data. The abundance of insect pollinators from the three study sites were sampled systematically using two transects one along the Shrubland and the other on farmland habitat. A total of 60 transect sample plots 30 in the farmland and 30 in the Shrubland habitats were observed in the study areas. A total of 34 insect pollinator species were identified. The most frequently recorded insect pollinator was *Apis mellifera* in Shrubland (60.4%) and farmland (67.3%). Insect diversity of the Shrubland was higher ( $H'=1.72$ ) than farmland ( $H'=1.514$ ). Similarly, evenness was higher in the Shrubland ( $J'=0.5485$ ) as compared to farmland ( $J'=0.4974$ ) which is somehow even distribution in both habitats. To understand the most visited plants by insect pollinators 40 wild plants and 4 crop species were identified. Among the sampled plants *Crassocephalum macropappurn* was the most frequently visited plant by different insect pollinators while *Guizotia abyssinica* was the most frequently visited among the sampled crops. The study has shown occurrence of diverse insect pollinators and plant species visited by insect pollinators as function of ecosystem services in the area.

**Keywords:** *ApisMellifera*, Ecosystem Service, Frequently Visited Plants, Insect Diversity, Pollinators Conservation

## 1. Introduction

Biological diversity is important for ecosystem functioning and services, not only as the basis for processes in nature, but also as a prerequisite for the improvement and sustainability of human wellbeing [1]. Pollination is one of a valuable ecosystem services in the maintenance of biodiversity and ensures the survival of plant species [2]. It improves the yield of most crop species and contributes to one-third of global crop production [3].

Pollination is the transfer of pollen from a flower's male organ to a flower's female organ [4]. Pollinators are insects, including honey bees, as well as birds and some mammals that transfer pollen from one flower to another.

They provide ecosystem service that result in the out-crossing and sexual reproduction of many plants [5]. Moreover, they benefit humans by increasing food production, foodsecurity which in turn improving their livelihoods and play a great role in conserving biodiversity in agricultural and natural ecosystems [5]. Consequently, pollinators are considered ecologically keystones; because, a major threat to pollinators is destruction of habitat and loss of forage which is subjected to the spread of invasive alien species [6].

Flowering plant species (87.5%) require an animal pollinator to reproduce [7]. Thus, in the absence of pollinators, many native plants can't produce seeds and ensure continuity of the plant species to next generation. These seeds and fruits the plants bear are important sources

of food for birds and many mammal species, including humans. However, as a result of self-incompatibility in many plant species (over 300 species of 70 families), active and functional pollen grains failed to effect fertilization on self-pollination lead and lacked seed set [8].

As [9] noted, greater than three quarters of the leading types of global food crops were rely on animal pollination for yield and/or quality. However, pollinators have been getting lost globally resulting in reduction of pollination services [10]. For instance, according to [11] \$302 billion reduction in the value of production across all sectors and regions representing 0.39% decrease from the 2004 baseline was reported. This was reported to happen mainly due to human induced impacts such as habitat destruction, land use change and use of chemicals, climate change, and invasive species [12, 13]. These have led to a reduction of both the number of individuals and species of native insect pollinators of crops and wild plants [14].

In agro-ecosystems, abundances and distribution of pollinator species which could be dependent on habitat factors are affecting yields of agricultural products and other agro-ecosystem functions in many ways [15]. Thus, the habitat composition and configuration along landscape have large impact on local farmers' food production. Service providing organisms, such as pollinators and natural enemies of crop pests, often disperse from natural and semi-natural habitats into farmland, increase yields and they are important to keep nature around farmland [16, 17]. Hence, assessing, identifying, documenting and managing pollinators' diversity in Ethiopia could have significant effect on the conservation and improvement of plant diversities in the country.

Recording insect pollinators' diversity and its role in the ecosystem is indispensable for determining the status of pollinators and developing appropriate management plans for the conservation of threatened insect pollinator species in Ethiopia. Thus, conducting pollinators' diversity assessment helps to recognize the economic and ecological value of pollinating animals, and potential impacts of the loss of pollinators' particularly insect pollinator-related ecosystem services and functions [5]. Furthermore, the acquired information would be important for the farming communities, policy-makers and scaled up to other such places. Therefore, the objective of this study is to assess and identify insect pollinators diversity and frequently visited plant species in cropland and natural habitat (Shrubland) of the area of Gozamin district.

## 2. Materials and Methods

### 2.1. The Study Area

The study district (Gozamin) is one of the 166 districts of Amhara National Regional State and one of the 20 districts of East Gojjam Zone. It has 25 rural kebeles, and one sub-city center. The district was bordered by Sinan district to the North, Machacle and Debre Elias districts to the West, Abay River Gorge to the South and Basoliben and Anedede district

to the East. It occurs at 299km from the West of Addis Ababa and 269 km from Bahir Dar, and located at 10° 36' 18" N and 37° 55' 02" E with an altitudinal range of 1000-3200 masl. [18] (Figure 1). The mean annual temperature records of the study area were in between 11.04°C and 25°C, whereas the mean annual rain fall distribution was in between 1448-1888mm [19]. The district has a total population of 153,295 of which 75,390 and 77,905 are male and female respectively where a few 2.82% of the populations live in urban and 97.18% in rural areas [19]. Ethnically, the majority of the population of the district is 'Amhara' and 'Amharic' is the main language used. Most of the populations (99.97%) are Orthodox, followed by Muslim (0.02%) and the rest are other religion followers [19]. Sedentary rain feed agricultural activities are practiced; and economy of the people are primarily based on mixed cereal crop growth such as Teff, Sorghum, Maize, Barley, Wheat, Pulses, Oil crops, Potato, Vegetables and Fruits.

Due to high anthropogenic effect in the study area, most of the original indigenous forest areas have been converted into other land use types, though remnant plants around holy places, inaccessible areas, and left for shade trees still persist [18]. Some of the remnant common indigenous plant species of the forest include *Juniperus procera*, *Hagenia abyssinica*, *Podocarpus falcatus*, *Acacia abyssinica*, *Cordia africana*, *Ficus sycomorus*, *Erythrina brucei*, *Calpurnia aurea*, *Prunus africana*, *Carissa spinarum*, *Rosa abyssinica*, *Dombeya torrid* and *Maytenus arbutifolia*.

### 2.2. Sampling & Method of Data Collection

The study district was selected purposively based on the wild plant and crop diversity and relative altitude difference of the study sites (kebeles). Based on the information from agriculture office Enerata, Yebona-Erjena, and Chimit kebeles were selected randomly after grouping each kebeles of the district in a relative altitude (dega, weynadega and kola) respectively.

Sampling of insect pollinators' observation, identification and recording and plant specimens from each study site were carried out within 10<sup>th</sup>-30<sup>th</sup> October 2015. Shrubland and Farmland habitats were selected in order to assess insect pollinators' diversity and plant flowers preferred by them. The abundance of insect pollinators in each study sites (Chimit, Enerata and Yebona –Erjena) were sampled using two transects. 'Transects' were the walk or path followed in the assessment to collect a sample of insect pollinators and plant specimens during the study. However, 'transect sample plot' was the plot area in which insect pollinators flower visitation, researcher observation and specimen collection were carried out. Each transect sample plot had 2\*2meter observation area which was designed by string [20]. Thus, one transects sampling conducted along the Shrubland and the other on farmland habitat.

A total of 60 sample plots were selected for observation of visitation in the whole study area. Twenty sample plots were observed in each of the sampled kebeles, ten in the Shrubland and ten in the farmland habitats. The distance between

consecutive transect sample plot in the Shrubland was determined according to [21]. There was a difficulty to measure transects on two lines of the Shrubland habitat; therefore, single transect walk was performed. Each consecutive transect sample plots of the Shrubland habitat was sampled and observed within 50 to 60m distance which was measured by walk (70 to 90 steps) approximately. Therefore, along the Shrubland habitat 1.5 to 1.8 km transect path was assessed in the whole study area, and 0.5 to 0.6 km of transect line walk was conducted in every study site. In each transects insect pollinators visiting plant and crop flowers and the plant species were recorded carefully. Moreover, Plants of Shrubland habitat in the transect sample plot, of which insect pollinators visit its flowers were identified in the field with the help of botanist. However, plants difficult to identify in the transect sample plot were specimens collected and pressed after giving accession number.

Farmland sampling was done with in 1km radius from any edge of the Shrubland habitat. This was due to scattered cultivation of the targeted crops in farmland habitat. Thus, the observer moved in a zigzag path to get insect pollinators from crop flowers. Observations were carried out under good weather conditions when insect pollinators are active, foraging, low wind, Sunny and warm unclouded days. In addition, plant and insect pollinator interactions were observed from 10:00 to 12:00 a. m. and between 1:00-4:00 p. m. [22, 21]. Each sample plot was determined to 30 minutes chance of observation. While collection, recording of insect

pollinators and change in observer position was in every seven to eight minutes. This was to ensure access to insect pollinator from different directions and to avoid bias due to shading.

The known insect pollinator species in each transect sample plot which visits plant and crop flowers were identified and recorded while unknown insect pollinators were captured for further identification using internet catalogue, taxonomist and identification books. Plant specimens' identification was conducted after the death of plants with the help of flora books of Ethiopia. However, plants which were difficult to identify be subjected to the national herbarium of Addis Ababa University for better identification. After the plant identification, mounting and leveling of passport data on the specimens and storing in Herbarium were conducted.

### 2.3. Data Analysis

The collected insect pollinators' diversity was calculated using Paleontological Statistics Software Package (PAST) and Shannon wiener index ( $H'$ ).  $H'$  defined as:  $H' = -\sum p_i \ln p_i$ , with  $p_i$  as the proportion of individuals found in the  $i^{th}$  species [23]. Species accumulation curves were used to illustrate the rate of new species in the study area. Moreover, measures of dissimilarity coefficient were conducted to assure insect pollinators' diversity distribution of the study sites.

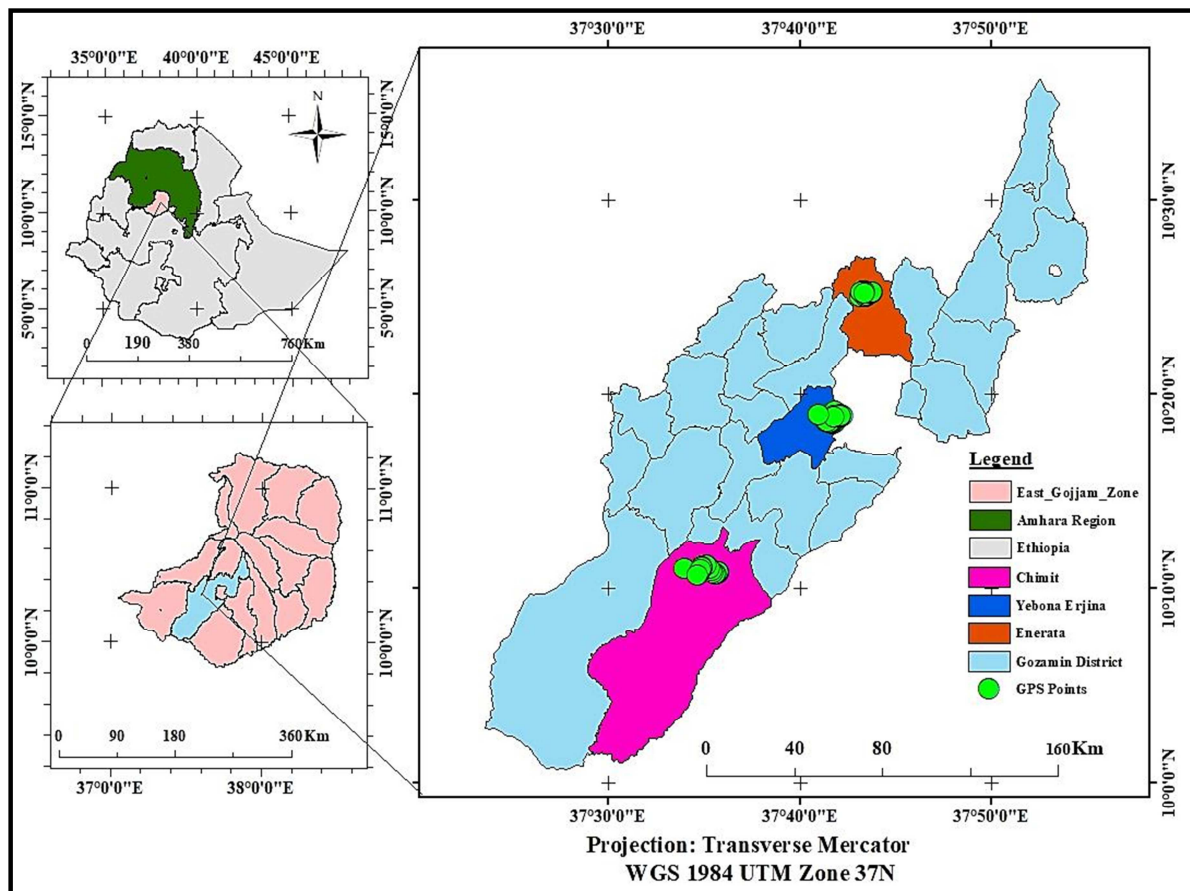


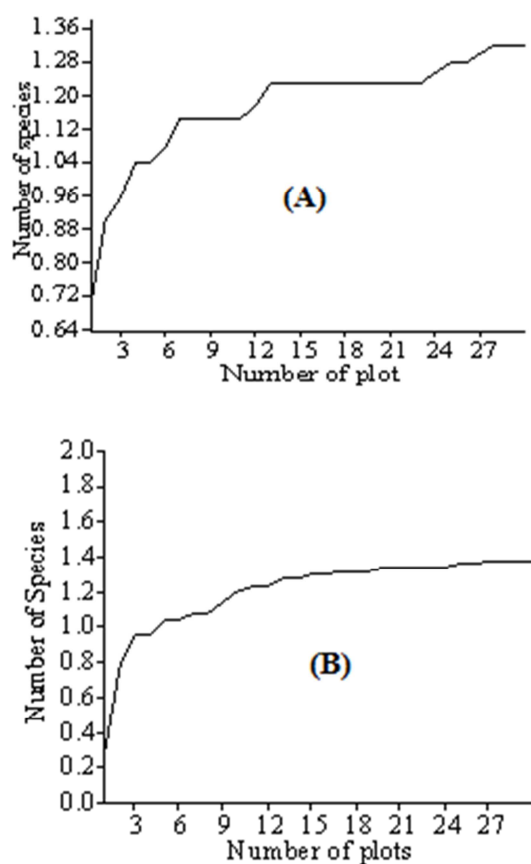
Figure 1. Map of the study area showing the sample sites.

### 3. Result and Discussion

#### 3.1. Estimating the Species Richness

Observations and samplings of insect pollinator species visit at the first sample plot of the farmland habitat were significant effects ( $\chi^2 = 32.000$ , 4df,  $P < 0.01$ ). While, insect pollinators visit at the first sample plot of Shrubland habitats were not significant effects ( $\chi^2 = 4.545$ , 1df,  $P > 0.01$ ). However, after taking a series of samples, insect pollinator visits were significant at farmland ( $\chi^2 = 8567.044$ , 20df,  $P < 0.001$ ) and the Shrubland ( $\chi^2 = 5793.011$ , 23df,  $P < 0.001$ ). Significance of the beginning observation and the whole sample shows insect visits and time of sampling were correctly matched.

Species richness in farmland and Shrubland habitats were estimated in Figure A and B. Species accumulation curves on Shrubland habitats indicates that unlikely to find new insect pollinator species. The probability of getting new species was reduced and no more species obtained. However, the farmland accumulation curve is still undulating indicates further research is necessary to determine optimum diversity of insect pollinators. As [24] described the number of species found increases as more samples are added, and when the line starts to bend (the inflection point) this suggests one is nearing the true total number of species in the habitat being sampled.



**Figure 2.** Species accumulation Curve of farmland (A) and Shrubland (B) habitats showing richness.

#### 3.2. Insect Pollinators Visit Recorded in Both Habitats

A total of 34 insect pollinator species belong to 26 families and 5 orders were recorded in the study (Table: 1). Out of these, 23 species of insect pollinators were recorded in Shrubland habitat and 21 species of insect pollinators' recorded in farmland habitats with total counts of 712 and 983 visits respectively (Table: 2).

**Table 1.** Insect Pollinators Identified in both Habitats.

NO	Order	Family	Species name
1	Coleoptera	Meloidae	<i>Actenodia curtula</i>
2	Coleoptera	Curculionidae	<i>Apion occidentale</i>
3	Coleoptera	Paralauca	<i>Besouro paralauca dives</i>
4	Coleoptera	Cerambycidae	<i>Ceropthesis thunbergi</i>
5	Coleoptera	Cantharidae	<i>Chauliognathus lugubris</i>
6	Coleoptera	Scarabaeidae	<i>Diplognatha gagates</i>
7	Coleoptera	Coccinellidae	<i>Epilachna borealis</i>
8	Coleoptera	Scarabaeidae	<i>Pachnoda sinuata</i>
9	Coleoptera	Scarabaeidae	<i>Pachnoda stehelini</i>
10	Coleoptera	Scarabaeidae	<i>Rutelinae sp.</i>
11	Diptera	Tipulidae	<i>Nephrotoma cornicina</i>
12	Diptera	Syrphidae	<i>Sphaerophoria scripta</i>
13	Hemiptera	Blissidae	<i>Blissus sp.</i>
14	Hemiptera	Miridae	<i>Campyloneura virgula</i>
15	Hemiptera	Pentatomidae	<i>Eurydema oleracea</i>
16	Hemiptera	Pentatomidae	<i>Euschistus sp.</i>
17	Hemiptera	Coreidae	<i>Leptoglossum gonagra</i>
18	Hymenoptera	Apidae	<i>Apis mellifera</i>
19	Hymenoptera	Argidae	<i>Arge sp.</i>
20	Hymenoptera	Pompilidae	<i>Cyphononyx optimus</i>
21	Hymenoptera	Eumenidae	<i>Delta emarginatum</i>
22	Hymenoptera	Ichneumonidae	<i>Ichneumon wasps</i>
23	Hymenoptera	Megachilidae	<i>Parafidelia major</i>
24	Hymenoptera	Vespidae	<i>Polistes sp.</i>
25	Hymenoptera	Apidae	<i>Xylocopa caffra</i>
26	Hymenoptera	Apidae	<i>Xylocopa sp.</i>
27	Lepidoptera	pieridae	<i>Coliascroceus</i>
28	Lepidoptera	Nymphalidae	<i>Danaus chrysippus</i>
29	Lepidoptera	pieridae	<i>Eurema hecabe</i>
30	Lepidoptera	Sphingidae	<i>Macroglossum trochilus</i>
31	Lepidoptera	Papilionidae	<i>Mocker swallowtail</i>
32	Lepidoptera	Notodontidae	<i>Phalera sp.</i>
33	Lepidoptera	Nymphalidae	<i>Polygonia C-album</i>
34	Lepidoptera	Nymphalidae	<i>Vanessa abyssinica</i>

Most of the species (13) were recorded in Shrubland habitats, 11 species in the farmland and the remaining 10 species were recorded in both habitats. As [25] noted number of species of insect pollinators varied across the two major habitats even if similar species were present. Because, Pollinator diversity varies between habitats, both in species richness and number of individuals recorded. *Apis mellifera* were the highest count 430 (60.3%) in Shrubland and 662 (67.3%) in farmland and highest abundance mean (143.33+ 6.13) in Shrubland and (220.67+ 10.30) in farmland (Table: 2) this shows honeybees are assumed to be the most important insect pollinator of plant and crop flowers.

Honeybee is the most important commercial pollinating insect, and its importance is increasing because of reduction in the number of wild honeybees and wild pollinators [26]. *Apis mellifera* were the most frequently recorded insect pollinator in the Shrubland habitat followed by *Rutelinae*

*species* and *Colias croceus* (Table: 2) which is not similar to [27] wild bees provide more visitation than managed *Apis mellifera*. However, *Campyloneura virgule* and *Eurydema oleracea* are the least insect pollinators observed during the transect assessment of Shrubland habitat.

**Table 2.** Insect pollinators recorded in Shrubland and Farmland habitats along the sampled kebeles.

Pollinator Species names	Shrubland Habitat						
	Chimit	Enerata	Yebona	Total count (TC)	Abundance mean	Mean + SEM	%Total count
<i>Actenodia curtula</i>	32	0	0	32	10.67	10.67 + 6.13	4.5
<i>Apion occidentale</i>	11	3	0	14	4.67	4.67 + 6.13	2
<i>Apis mellifera</i>	120	168	142	430	143.33	143.33 + 6.13	60.3
<i>Blissus sp.</i>	0	0	3	3	1	1.00 + 6.13	0.4
<i>Ceropales thunbergi</i>	6	0	0	6	2	2.00 + 6.13	0.8
<i>Chauliognathus lugubris</i>	0	4	0	4	1.33	1.33 + 6.13	0.6
<i>Colias croceus</i>	5	6	4	15	5	5.00 + 6.13	2.1
<i>Cyphononyx optimus</i>	9	0	0	9	3	3.00 + 6.13	1.3
<i>Danaus chrysippus</i>	2	0	0	2	0.67	0.67 + 6.13	0.3
<i>Delta emarginatum</i>	0	0	9	9	3	3.00 + 6.13	1.3
<i>Eurema hecabe</i>	7	0	0	7	2.33	2.33 + 6.13	1
<i>Euschistus sp.</i>	2	0	0	2	0.67	0.67 + 6.13	0.3
<i>Ichneumon wasps</i>	0	5	0	5	1.67	1.67 + 6.13	0.7
<i>Leptoglossus gonagra</i>	5	3	0	8	2.67	2.67 + 6.13	1.1
<i>Macroglossum trochilus</i>	5	4	0	9	3	3.00 + 6.13	1.3
<i>Mocker swallowtail</i>	0	4	4	8	2.67	2.67 + 6.13	1.1
<i>Pachnoda stehelini</i>	9	8	36	53	17.67	17.67 + 6.13	7.4
<i>Parafidelia major</i>	4	0	0	4	1.33	1.33 + 6.13	0.6
<i>Polygonia c-album</i>	2	9	0	11	3.67	3.67 + 6.13	1.5
<i>Rutelinae species</i>	4	10	0	14	4.67	4.67 + 6.13	2
<i>Sphaerophoria scripta</i>	0	5	0	5	1.67	1.67 + 6.13	0.7
<i>Xylocopa caffra</i>	6	0	2	8	2.67	2.67 + 6.13	1.1
<i>Xylocopa sp.</i>	40	0	14	54	18	18.0 + 6.13	7.6
Total (Σ)	269	229	214	712			100

**Table 2.** Continue.

Pollinator Species names	Farmland Habitat						
	Chimit	Enerata	Yebona	Total count (TC)	Abundance mean	Mean + SEM	% Total count
<i>Apis mellifera</i>	246	228	188	662	220.67	220.67 + 10.30	67.3
<i>Arge sp.</i>	-	-	6	6	2	2.00 + 10.30	0.6
<i>Besouro paralauc dives</i>	-	-	15	15	5	5.00 + 10.30	1.5
<i>Campyloneura virgula</i>	4	-	-	4	1.33	1.33 + 10.30	0.4
<i>Colias croceus</i>	5	20	16	41	13.67	13.67 + 10.30	4.2
<i>Danaus chrysippus</i>	7	9	3	19	6.33	6.33 + 10.30	2
<i>Diplognatha gagates</i>	15	-	-	15	5	5.00 + 10.30	1.5
<i>Epilachna borealis</i>	-	-	17	17	5.67	5.67 + 10.30	1.7
<i>Eurema hecabe</i>	8	-	-	8	2.67	2.67 + 10.30	0.8
<i>Eurydema oleracea</i>	4	-	-	4	1.33	1.33 + 10.30	0.4
<i>Macroglossum trochilus</i>	11	9	6	26	8.67	8.67 + 10.30	2.6
<i>Mocker swallowtail</i>	6	4	8	18	6	6.00 + 10.30	1.9
<i>Nephrotoma cornicina</i>	-	5	-	5	1.67	1.67 + 10.30	0.5
<i>Pachnoda sinuata</i>	20	4	-	24	8	8.00 + 10.30	2.4
<i>Parafidelia major</i>	6	-	-	6	2	2.00 + 10.30	0.6
<i>Phalera sp.</i>	-	5	-	5	1.67	1.67 + 10.30	0.5
<i>Polistes sp.</i>	-	-	6	6	2	2.00 + 10.30	0.6
<i>Polygonia c-album</i>	4	5	9	18	6	6.00 + 10.30	1.9
<i>Rutelinae species</i>	23	23	13	59	19.67	19.67 + 10.30	6
<i>Sphaerophoria scripta</i>	-	7	-	7	2.33	2.33 + 10.30	0.7
<i>Vanessa abyssinica</i>	18	-	-	18	6	6.00 + 10.30	1.9
Total (Σ)	377	319	287	983			100

N. B: SEM (standard Error of Mean) Diversity of Insect pollinators in both habitats.

**Table 3.** Comparison of diversity results in different indices of Shrubland and Cropland habitats.

Index Name	Shrubland habitat						Cropland habitat					
	Chimit	Enerata	Yebona-Erjena	Combined	Upper boundary	Lower boundary	Chimit	Enerata	Yebona-Erjena	Combined	Upper boundary	Lower boundary
Taxa (S)	17	12	8	23	21	23	14	11	11	21	20	21
Individuals	269	229	214	712	712	712	377	319	287	983	983	983
$D = \sum P_i^2$	0.2425	0.5458	0.4756	0.3807	0.34	0.4226	0.4388	0.5231	0.4437	0.4626	0.426	0.5
1-D	0.7575	0.4542	0.5244	0.6193	0.5773	0.6591	0.5612	0.4769	0.5563	0.5374	0.4995	0.5738
H'	1.976	1.196	1.136	1.72	1.58	1.823	1.471	1.194	1.399	1.514	1.401	1.607
Brillouin	1.868	1.113	1.076	1.659	1.522	1.762	1.403	1.133	1.329	1.471	1.359	1.562
Menhinick	1.037	0.793	0.5469	0.862	0.787	0.862	0.721	0.6159	0.6493	0.6698	0.6379	0.6698
Margalef	2.86	2.024	1.305	3.35	3.045	3.35	2.191	1.735	1.767	2.903	2.757	2.903
$J' = H'/H'max$	0.6975	0.4815	0.5463	0.5485	0.5073	0.583	0.5575	0.4978	0.5832	0.4974	0.4602	0.5277
Fisher alpha	4.033	2.694	1.64	4.545	4.06	4.545	2.864	2.209	2.269	3.772	3.555	3.772
Berger-parker	0.4461	0.7336	0.6636	0.6039	0.566	0.639	0.6525	0.7147	0.6551	0.6734	0.6439	0.7009

N. B. Simpson index ( $D$ )= $(\sum P_i^2)$ , Simpson= $(1-D)$ , Shannon Diversity ( $H'$ ), Equitability ( $J'$ )= $(H'/H'max)$ .

Insect pollinators diversity across the Shrubland habitat were highest in Chimit ( $H' = 1.976$ ), with evenness value ( $H'/H'max$ ) of (0.6975) (Table 3). The combined Shannon insect pollinators diversity ( $H' = 1.72$ ) was moderate diversity with evenness value of (0.5485) (Table 3). Of the sites in the farmland Enerata was the smallest species diversity ( $H' = 1.194$ ), while Chimit was relatively highest number of species record ( $H' = 1.471$ ) (Table 3). However, Equitability of Chimit (0.5575) and Yebona-Erjena (0.5832) showing insect pollinators were relatively distributed evenly; and Enerata ( $J' = 0.4978$ ) was low evenness (Table 3). Moreover, the combined diversity ( $H' = 1.514$ ) of farmland habitat was less than that of Shrubland habitat (1.726) (Table 3). Shannon-wiener and Simpson indices indicated that diversity

of insect pollinator was from medium to low condition in both habitats even if *Apis mellifera* visit frequently. As [28] reported crop area was not evenly distributed with a dominance of some species and the forest area was evenly distributed with only a negligible dominance.

### 3.3. Analysis of Similarity Index

Coefficients of dissimilarity in both habitats showed insect pollinators were dissimilar, as Jaccard and Sorensen coefficient approach to zero. However, the Sorensen similarity index in combined data (farmland with Shrubland) showed more than half of insect pollinators obtained during the assessment were similar (Table: 4).

**Table 4.** Result of Jaccard and Sorensen dissimilarity coefficient compared in both habitats.

Dissimilarity coefficient	Shrubland site compared			Farmland site compared			
	Chimit with Enerata	Chimit with Yebo	Enerata with Yebo	Chimit with Enerata	Chimit with Yebo	Enerata with Yebo	Farmland with Shrubland
Jaccard	0.216	0.148	0.182	0.242	0.219	0.241	0.436
Sorensen	0.356	0.258	0.308	0.39	0.359	0.389	0.607

### 3.4. Plant Species and Insect Pollinators

A total of 40 flowering plant species from 18 plant families were recorded in the natural habitat during the study (Table: 5). The most visited plant families were Asteraceae (12 spp.), followed by Fabaceae (7 spp.) and Acanthaceae (5 spp.). Most of the insect pollinators' visited plant flowers from Asteraceae (27.9%), Acanthaceae (14.5%) and Fabaceae (13.1%).

**Table 5.** Plants Visited by Insect Pollinators in the Natural Habitat.

NO	Species Name	Family	Local name	No of pollinators
1	<i>Acanthus pubescens</i>	Acanthaceae	kosheshla	22
2	<i>Achyranthes aspera</i>	Amaranthaceae	T'elenge	24
3	<i>Aeschynomene abyssinica</i>	Fabaceae	-	34
4	<i>Barleria ventricosa</i>	Acanthaceae	-	5
5	<i>Bidens pachyloma</i>	Asteraceae	Adeye	35
6	<i>Buddleja polystachya</i>	Buddlejaceae	Anfare	14
7	<i>Caesalpinia decapetala</i>	Fabaceae	-	20
8	<i>Carissa spinarum</i>	Apocynaceae	Agam	56
9	<i>Clematis hirsuta</i>	Ranunculaceae	-	4
10	<i>Crassocephalum macropappum</i>	Asteraceae	Monto	46
11	<i>Equinops sp.</i>	Asteraceae	-	17
12	<i>Glycine wightii</i>	Fabaceae	-	3
13	<i>Gnidia glauca</i>	Thymelaeaceae	Awora	13
14	<i>Gouania longispicata</i>	Rhamnaceae	-	24
15	<i>Guizotia scabra</i>	Asteraceae	Meche	32



NO	Species Name	Family	Local name	No of pollinators
16	<i>Helichrysum sp.</i>	Asteraceae	-	11
17	<i>Helinus mystacinus</i>	Rhamnaceae	-	2
18	<i>Hibiscus macranthus</i>	Malvaceae	-	8
19	<i>Hygrophilia auriculata</i>	Acanthaceae	Ameykela	38
20	<i>Hypericum quartinianvm</i>	Hypericaceae	Ameja	22
21	<i>Hypoestes forskalii</i>	Acanthaceae	-	5
22	<i>Ipomoea sp.</i>	Covulvaceae	-	25
23	<i>Justicia schimperiana</i>	Acanthaceae	Sensel	33
24	<i>Lantana trifolia</i>	Verbenaceae	Yeeregnakolo	7
25	<i>Maytenus arbutifolia</i>	Celastraceae	Atate	5
26	<i>Mikaniopsis clematoides</i>	Asteraceae	-	5
27	<i>Pavonia aurens</i>	Malvaceae	Nacha	16
28	<i>Phaseolus sp.</i>	Fabaceae	-	5
29	<i>Rosa abyssinica</i>	Rosaceae	Qega	52
30	<i>Rumex nepalensis</i>	Polygonaceae	Qtele-rejim	6
31	<i>Rumex nervosus</i>	Polygonaceae	Im'bwach'o	16
32	<i>Senecio ochrocarpus</i>	Asteraceae	-	9
33	<i>Senna didnobotrya</i>	Fabaceae	Gemaie	22
34	<i>Senna septemtrionalis</i>	Fabaceae	-	5
35	<i>Senna singueana</i>	Fabaceae	Gufa	4
36	<i>Solanum incanum</i>	Solanaceae	Zercho	16
37	<i>Sonchus bipontini</i>	Asteraceae	-	6
38	<i>Verbascum sinaiticum</i>	Scrophulariaceae	Yeahyajero	7
39	<i>Vernonia auriculifera</i>	Asteraceae	Gengerita	7
40	<i>Vernonia sp.</i>	Asteraceae	-	31

The maximum plant recorded per plot was 5 species while the minimum was single species. *Crassocephalum macropappurn* was the most visited plant species by different insect pollinators (*Apis mellifera*, *Rutelinae sp.*, *Polygonia c-album*, *Apion occidentale*, *Chauliognathus lugubris*, and *Colias croceus*). The plant *Hygrophilia auriculata* and *Rosa abyssinica* were visited by 5 insect species each; *Guizotia scabra*, *Solanum incanum* and, *Carissa spinarum* were visited by 4 insect species each; *Pavonia urens*, *Gouania longispicata*, *Bidens pachyloma*, *Caesalpinia decapetala* and *Achyranthes aspera* were visited by 3 insect species each; and *Rumex nepalensis*, *Justicia schimperiana*, *Acanthus pubescens*, *Ipomoea sp.*, *Hypericum quartinianvm*, *Senna didnobotrya*, *Rumex nervosus* and *Buddleja polystachya* were visited by 2 insect species each. However, the rest plant species (21) were visited by a single insect species. Asteraceae family plant flowers attracted insect pollinators reflect, flower appearance in this family have a better attracting aroma, brightened color, and preferable resource (nectar and pollen) than those plant families observed in this study. *Crassocephalum macropappurn* was visited by many insect pollinators indicates the plant have the richest source of nectar and pollen. Honeybees collect pollen and nectar from *Crassocephalum macropappurn* frequently and the long flowering period is very helpful for strengthening bee colonies and it was a good source of honey [29]. Low

flowering plant record with in a plot indicate how much the diversity of plants were disturbed, and flowers visited by single species of insect pollinators indicate insect pollinators prefer the resource obtained from plants which is pollen and nectar.

### 3.5. Crop Species and Insect Pollinators

Totally four cultivated crop types were assessed in this study (Table: 6). Niger seed (*Guizotia abyssinica*) was highly visited (893 times or 90.84%) by insect pollinators and Rape seed (*Brassica napus*) was the least visited (1.42%). Order Hymenoptera was the most frequent crop pollinator species (69.2%) and Hemiptera was the least pollinator species (0.8%). The most frequent crop visitors were *Apis mellifera* (67.34%). However, *Eurydema oleracea* and *Campyloneura virgule* were recorded as the least visitors (0.4%). Honeybees visit crop flower more reflects these species are the main insect pollinators of agricultural landscape. As [30] reported honeybees are the most widely used insect pollinator in agricultural systems, as they are easily managed. Honeybees and other insect pollinators have significant effect on Niger seed yield, so that keep their colonies neighboring to flowers of Niger seed in order to optimize pollination efficiency and enhance productivity [31].

Table 6. Crop species visited by insect pollinators.

Crop species	Scientific name	No of pollinators recorded in each study site				% Total
		Chimit	Enerata	Yebo	Total	
Niger seed	<i>Guizotia abyssinica</i>	363	308	222	893	90.84
Rapeseed	<i>Brassica napus</i>	14	0	0	14	1.42
linseed	<i>Linum usitatissimum</i>	0	11	11	22	2.43
Grass pea	<i>Lathyrus sativus</i>	0	0	54	54	5.49

## 4. Conclusion and Recommendations

The result of the study revealed that there were a total of 34 insect pollinators in both the Shrubland and farmland habitats of the study area. The finding also showed that diversity of insect pollinators in the study area was from mid-to low and *Apis mellifera* was the most numerous and frequent insect pollinator among other insects identified in the study area. Findings from the plant indicated that Asteraceae was the most frequently visited plant family by insect pollinators in the area. Therefore, this has shown occurrence of diverse insect pollinators and plant species visited by insect pollinators' as function of ecosystem services in the area. Finally a need of further research to determine insect pollinators' diversity in different season to detect trends, distributions, yearly abundances and population fluctuation are important. Conducting research of identification on crop pest from insect pollinators' and awareness creation on the use of insects to farmers which are pollinators or not.

## Acknowledgements

I am greatly thanks to Ethiopian Biodiversity Institute, for the financial support. My thanks also went to the staff of Gozamin district Agricultural Office, especially Mr. Esuyawukal Tirunehe and the study kebeles extension agents. Dr. Tesfu Fukensa cooperation on insects' identification was also likely appreciated.

## References

- [1] Callicott JB, Crowder LB, Mumford K (1999). Current Normative Concepts in Conservation. *Conservation Biology* 13: 22–35.
- [2] Kluser S, Peduzzi P (2007). *Global Pollinator Decline: A Literature Review*, UNEP/GRID Europe, UNEP.
- [3] Klatt B. K, Holzschuh A, Westphal C, Clough Y, Smit I, Pawelzik E, Tscharntke T (2014). Bee pollination improves crop quality, shelf life and commercial value. *Proc. R. Soc. B* 281: 20132440. <http://dx.doi.org/10.1098/rspb.2013.2440>.
- [4] Roubik DW (1995). *Pollination of Cultivated Plants in the Tropics*. Rome, Italy: Food and Agriculture Org., UN.
- [5] African Pollinator Initiative (API) (2006). *Pollinators and pollination: A resource book for policy and practice*. ISBN: 1-86849-310-5. pp. 1-52.
- [6] Peterson W, John SR, Ellsworth D, Colopy M (2015). *Pollinators and Rights-of-Way*. pp. 36-39.
- [7] Ollerton J, Winfree R, Tarrant S (2011). How many flowering plants are pollinated by animals? *Oikos*, 120: 321–326.
- [8] Patil HS, Duhoon SS (2006). Self-Incompatibility, Male Sterility and Pollination Mechanism in Niger (*Guizotia abyssinica* (L. F.) CASS.}. A review. All India Coordinated Research Project on Niger, Zonal Agricultural Research Station, India: 113-121.
- [9] Intergovernmental Science Policy platform on Biodiversity and Ecosystem Services (IPBES) (2016). Summary for Policymakers of the Assessment Report on Pollinators, Pollination and Food Production. Pp 10.
- [10] Winfree R, Ramiro A, Diego P, Vazquez, Gretchen L, Marcelo A, Aizen (2009). A meta-analysis of bees' response to anthropogenic disturbance. *University of Californi, Berkeley, California 94720-3114 USA*. *Ecology*, 90 (8): 2068–2076.
- [11] Bauer DM, Wing IS, (2011). *The Macroeconomic Cost of Catastrophic Pollinator Declines*, Department of Geography and Environment, Boston University. USA. pp.13.
- [12] Kearns CA, Inouye DW, Waser NM, (1998). Endangered Mutualism: The Conservation of Plant-pollinator Interaction. *Annu. Rev. Ecol.* 29: 83-112.
- [13] Goulson DG, Lye C, Darvill B (2008). Decline and conservation of bumble bees. *Annual Review of Entomology* 53: 191–208.
- [14] Vanbergen AJ, Insect Pollinators Initiative (IPI) (2013). Threats to an ecosystem service: pressures on pollinators. *Frontiers in Ecology and the Environment*, doi: 10.1890/120126
- [15] Ulrika S (2016). The impact of forest on pest damage, pollinators and pollination services in an Ethiopian agricultural landscape. Stockholm University, Sweden, ISBN 978-91-7649-354-0.
- [16] Bianchi F, Booij CJ, Tscharntke T (2006). Sustainable pest regulation in agricultural landscapes: a review on landscape composition, biodiversity and natural pest control. *Proceedings of the Royal Society B-Biological Sciences*, 273: 1715-1727.
- [17] Macfadyen S, Hopkinson J, Parry H, Neave MJ, Bianchi F, Zalucki MP (2015). Early-season movement dynamics of phytophagous pest and natural enemies across a native vegetation-crop ecotone. *Agriculture Ecosystems and Environment*, 200: 110-118.
- [18] Haimanot R, Zemede A, Ensermu K (2015). Contribution of Traditional Farmers for Medicinal Plant Conservation on the Farming Site in Gozamin District, Amhara Region, Ethiopia. *International Journal of Life Sciences* 4: 24-35.
- [19] Gozamin District Finance and Economic Development office (GDFED) (2015). The second five year Growth and transformation plan. Integrated Budget Planning and development case team (*unpublished*). Pp.4-5.
- [20] Hennig EI, (2011). *Plant Diversity Effects on Plant-Pollinator Interactions in Urban and Agricultural Settings*. University Duisburg-Essen. pp. 10-80.
- [21] Ward K. D, Cariveau E, May M, Roswell M, Vaughan N, Williams R, Winfree R, Isaacs, Gill K. (2014). Streamlined Bee Monitoring Protocol for Assessing Pollinator Habitat. Portland, OR: The Xerces Society for invertebrate Conservation. pp. 16.
- [22] Food and Agriculture Organization (FAO) (2011). Protocol To Detect And Assess Pollination Deficits In Crops: A Handbook For Its use. Pollination service for Sustainable Agriculture. Field manual, Rome Italy. pp 20-50.
- [23] Magurran AE (2004). *Measuring Biological Diversity*. Blackwell Publishing. pp. 106-110.



- [24] Adams J (2009). Species Richness Patterns in the Diversity of Life. Springer-Praxis Books in Environmental Sciences Subject Advisory Editor, ISBN 978-3-540-74277-7. pp. 1-20.
- [25] Stojnić SM, Andrić A, Józán Z, Vujić A (2012). Pollinator diversity (Hymenoptera and Diptera) in semi-natural habitats in Serbia during summer. University of Novi Sad, Serbia 2 H-7453 Mernye, Hungary.
- [26] James ET (2004). Backyard Beekeeping. Alabama Cooperative Extension System. ISBN 0-9722580-6-X. pp. 25.
- [27] Winfree R, Neal M, William, Hannah G, John S, Ascher, Kremen C (2008). Wild bee pollinators provide the majority of crop visitation across land-use gradients in New Jersey and Pennsylvania, USA. *Princeton University, Princeton, NJ 08544, USA. Journal of Applied Ecology*, 45: 793–802.
- [28] Zahoor MK., Suhail A, Iqbal J, Zulfaqar Z, Anwar M (2003). Biodiversity of Noctuidae (Lepidoptera) in Agro-Forest Area of Faisalabad, University of Agriculture, Government of Punjab, Pakistan *Int. J. Agri. Biol.* 5: 560–563.
- [29] Fichtl R, Admasu A (1994). Honeybee Flora of Ethiopia. Margraf, Verlag, Weikersheim, Germany. ISBN 3-8236-1234-4. pp. 45.
- [30] Park M, Bryan D, John L, David B, Mace V, Jolie D, Edwin R, Arthur A (2012). Wild Pollinators of Eastern Apple Orchards and How to Conserve Them. Cornell University, The Xerces Society.
- [31] Haftom G, Alemayehu T (2014). Effect of honey bee (*Apis mellifera*) pollination on seed yield and yield parameters of *Guizotia abyssinica* (L. F), Apiculture and sericulture case team, Mekelle Agricultural Research center. 9: 3687-3691.