

Methicillin Resistant *Staphylococcus aureus* (MRSA) in Patients of Community Based Medical College Hospital, Mymensingh, Bangladesh

Khalid Hussain¹, Marzia Rahman^{1, *}, K. H. M. Nazmul Hussain Nazir¹, Hasibur Rahman², Abul Khair³

¹Department of Microbiology and Hygiene, Faculty of Veterinary Science, Bangladesh Agricultural University, Mymensingh, Bangladesh

²Department of Skin & VD, Community Based Medical College, Bangladesh, Mymensingh, Bangladesh

³Department of Medicine, Faculty of Veterinary Science, Bangladesh Agricultural University, Mymensingh, Bangladesh

Email address:

marzia_micro@bau.edu.bd (M. Rahman), nazir@bau.edu.bd (K. H. M. N. H. Nazir)

*Corresponding author

To cite this article:

Khalid Hussain, Marzia Rahman, K. H. M. Nazmul Hussain Nazir, Hasibur Rahman, Abul Khair. Methicillin Resistant *Staphylococcus aureus* (MRSA) in Patients of Community Based Medical College Hospital, Mymensingh, Bangladesh. *American Journal of Biomedical and Life Sciences*. Vol. 4, No. 3, 2016, pp. 26-29. doi: 10.11648/j.ajbls.20160403.11

Received: March 17, 2016; Accepted: March 28, 2016; Published: April 21, 2016

Abstract: The rapid rise in resistance of *Staphylococcus aureus* to various antimicrobial agents is now a growing concern. The objectives of this study were to investigate the frequency of Methicillin Resistant *S. aureus* (MRSA) in different cases of infection, and to determine the pattern of antimicrobial susceptibility among the *S. aureus* originated from human in Mymensingh, Bangladesh. Covering a period of five months during July 2014 to November 2014, a total of 65 samples comprises of pus, wounds, eye lesions, burns were collected from the Community Based Medical College Hospital (CBMCH), Mymensingh, Bangladesh, and the samples were processed at the Department of Microbiology and Hygiene, Bangladesh Agricultural University (BAU), Mymensingh-2202. Among the 65 samples, 20% (n=13/65) were confirmed as *S. aureus* on the basis of colony morphology, staining characteristics, biochemical properties, and Polymerase Chain Reaction (PCR) by amplification of *nuc* gene (amplicon size 279-bp). Among these 13 *S. aureus* isolates, 15.38% (n=2/13) were found to be resistant to Methicillin which was confirmed by antibiotic disk sensitivity test and PCR by amplifying MRSA specific *mecA* gene (amplicon size 533-bp). The antibiotic disk sensitivity test indicated that the MRSA isolates were completely (100%) resistant to Penicillin and Erythromycin. The MRSA represents a major challenge for treatment in hospital due to the emergence and spread of antibiotic resistant isolates among susceptible individual.

Keywords: *nuc* Gene, *mecA* Gene, MRSA, Human, Vancomycin

1. Introduction

Staphylococcus aureus, a Gram-positive coccus, is a member of the Firmicutes, and is frequently found in the human respiratory tract and on the skin [1]. Methicillin was one of most common types of antibiotics used to treat *S. aureus* infections. Methicillin belongs to a comprehensive class of antimicrobials, the β -lactam antimicrobials or β -lactams. The mode of action is inhibition of bacterial cell wall biosynthesis. The 1st Methicillin Resistant *S. aureus* reported in UK just 2 years after the introduction of Methicillin in 1959

[2]. MRSA are often described as community associated or healthcare associated. The MRSA is only susceptible to Vancomycin but it has a carcinogenic effect.

2. Materials and Methods

2.1. Sample Collection

A total of 65 Samples (Pus, Burn, Wound, Eye lesion) were collected from Community Based Medical College Hospital, Bangladesh (CBMCH) during the period of July 2014 to November 2014 [3, 4]. The collected samples were inoculated

into nutrient broth (Merck Specialties Private Limited) and incubated at 37°C for 3-4 hours followed by inoculation onto 5% sheep blood agar media and incubated at 37°C for overnight. The plates showed β -hemolysis was suspected as *S. aureus*. Pure culture of *S. aureus* was obtained by repeated sub-culturing onto blood agar media [5].

2.2. Gram Staining

Gram's stain was performed in order to observe the morphology of bacteria under light microscope, as per the method described by Jahan *et al.* [6].

2.3. Culture in Selective Media

Suspected *S. aureus* colonies were inoculated onto Mannitol Salt Agar (MSA) media to observe the colony characteristics [7, 8, 9].

2.4. Biochemical Tests

2.4.1. Catalase Test

This test was carried out to differentiate the Staphylococci from non-catalase producing Streptococci. The test was done according to the procedure described by Zarzour and Belle [10] and Jahan *et al.* [6].

2.4.2. Coagulase Test (Slide Method)

This test was carried out to distinguish between strains of *Staphylococci*. For the coagulase test, rabbit plasma was used in this study. The test was done as per the procedure described by Zarzour and Belle [10] and Jahan *et al.* [6].

2.5. PCR Amplification of *S. aureus* Specific *nuc* Gene

The suspected *S. aureus* was confirmed by PCR using specific *nuc* gene primers (Table 1) [11]

2.6. Extraction of DNA by Boiling Method

A single colony of *S. aureus* was taken in 200 μ L of DW in eppendorf tube, mixed well and then boiling for 10 min. After boiling, the tubes were immediately placed on ice for cold shock for 10 minutes followed by centrifugation at 10,000 rpm for 10 min at 4°C. The supernatant was collected which was further used as template DNA.

2.7. Detection of MRSA Specific *mecA* Gene by PCR

The suspected Methicillin resistant *S. aureus* was confirmed by PCR using MRSA specific *mecA* gene, with an expected protocol size 533 bp. The DNA of *S. aureus* which showed resistant to Oxacillin in the disk diffusion method was taken for the detection of *mecA* gene by PCR [11]. For this purpose, *mecA* gene Forward primer and Reverse primer were used that mentioned in Table 1.

2.8. PCR Reaction Mixture and Condition

Each 25 μ L reaction mixture consists of 5 μ L genomic DNA, 12.5 μ L PCR master mixture (Promega, USA), 2 μ L primer (1 μ L forward and 1 μ L reverse primer) with the final

volume adjusted to 25 μ L with 5.5 μ L of nuclease free water.

Amplification was done by initial denaturation at 95°C for 5 min, followed by 30 cycles of denaturation at 95°C for 1 min, annealing temperature of primers was 55°C for 45 sec and extension at 72°C for 1 min. The final extension was conducted at 72°C for 10 min [11].

2.9. Agarose Gel Electrophoresis of PCR Product

The amplified PCR products were resolved by electrophoresis in 2% agarose gel at 100-V for 30 minutes, stained with ethidium bromide and finally visualized under UV trans-illuminator [11].

Table 1. Primers used in PCR for *nuc* gene and *mecA* gene.

Primers	Primer sequence (5'-3')	Product size (bp)	Reference
<i>nuc</i> F	5'-GCG ATT GAT GGT GAT ACG GTD-3'	279	[12]
<i>nuc</i> R	5'-AGC CAA GCC TTG ACG AAC TAA AGC-3'		
<i>mec</i> A/F	5'-AAA ATC GAT GGT AAA GGT TGGC-3'	533	[12]
<i>mec</i> A/R	5'-AGT TCT GGC ACT ACC GGA TTT TGC-3'		

2.10. Antimicrobial Susceptibility Testing

Antibiotic susceptibility test for *S. aureus* isolates was determined by using the disk diffusion [10, 13]. This test was applied on Muller-Hinton agar media. Cell suspension was prepared in sterile saline to match 0.5 McFarland turbidity standards.

Then sterile cotton swab was dipped into the bacterial suspension and excess fluid was removed by rotate pressing with the inner wall of the suspension tube. The bacteria from the swab were inoculated onto the Muller-Hinton surface, rotating the plate three times at 60 degrees. After drying, the antibiotic disks (Penicillin, Neomycin, Oxacillin, Erythromycin, Vancomycin & Ciprofloxacin) were placed on the plates.

The plates were incubated in an inverted position overnight at 35°C. The diameter was measured for each zone of inhibition that appears around the disk. The results were recorded in millimeters. Inhibition zone diameters were compared to the reference list of the manufacturer.

3. Results and Discussion

Methicillin resistant *S. aureus* (MRSA) has emerged worldwide as a significant public health problem both in human and animals. *S. aureus* is an important pathogen causing infections in skin and soft tissue as well as food poisoning too. To treat *S. aureus* related infections, it is important to have adequate information and understanding the trends of antibiotic resistance patterns of those respective bacteria.

The clinical samples (n=65) were collected from both sexes and prevalence was found more in female (55%) as

compared to males (45%). Out of the 65 samples, *S. aureus* could be isolated from 20% (n=13/65) samples, and *mecA* was detected in 15.38% (n=2/13) isolates. In Gram's staining method, it showed smooth, convex, approximately 1 mm in diameter, grape-like clusters when viewed under light microscope, as reported by Tanzin et al. [11]. It has large, round, golden-yellow colonies, with β -hemolysis on blood agar plates (Figure 1 and 2), as reported by Kenneth [14] and Stavropoulos et al. [15].

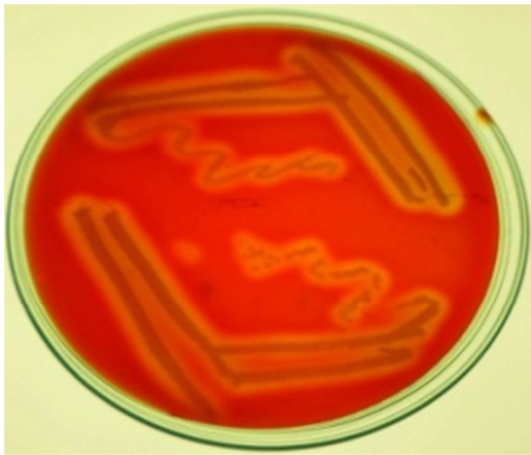


Figure 1. β -hemolysis produced by the pure culture of *Staphylococcus aureus* onto 5% sheep blood agar.



Figure 2. Fermentation of MSA by *Staphylococcus aureus* indicated by formation of yellowish colony.

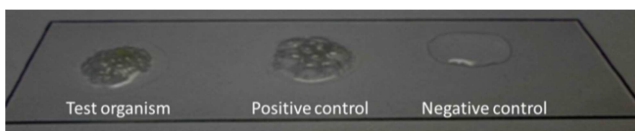


Figure 3. Catalase test (slide test). The positive result is indicated by formation of bubble due to release of oxidation of H_2O_2 by catalase enzyme.

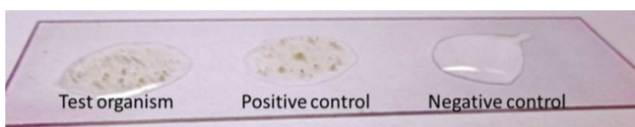


Figure 4. Result of coagulase test (slide test). Positive result is indicated by curd like clotting of plasma by coagulase positive *S. aureus*.

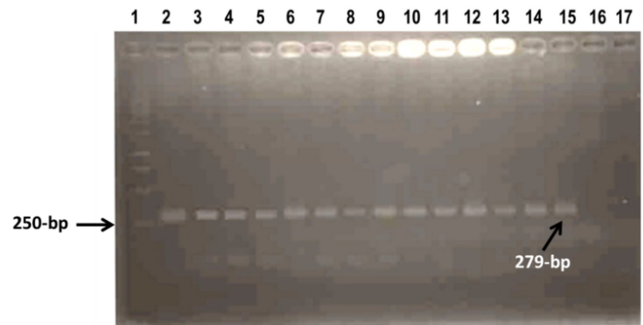


Figure 5. Results of PCR of *S. aureus* specific *nuc* gene (size=279 bp). Here Lane 1: 100 bp ladder, 2-14: positive samples amplified *nuc* gene, L-15: positive control, L-16: negative control, L-17: negative result of test samples.

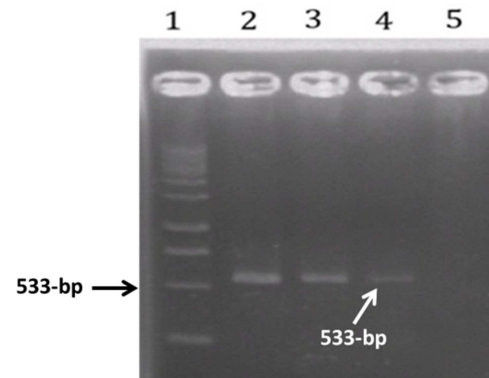


Figure 6. Amplification of *mecA* gene (size=533-bp) from *S. aureus* (1=100-bp ladder, 2,3 =Amplified *mecA* gene of *S. aureus*, 4= Positive control, 5= Negative control).

All 13 isolates were found both catalase and coagulase positive (Figure 3 and 4). In antimicrobial susceptibility test, both the MRSA strains were resistant to Oxacillin, Erythromycin, Neomycin, Penicillin G and intermediate resistant to Ciprofloxacin. The isolates were sensitive to Vancomycin which is nearly similar to the findings of Anupurba et al. [16], Rajadurai et al. [17], Parveen et al. [18] and Tanzin et al. [11].

PCR based molecular detection was performed to identify the *S. aureus* and MRSA. Amplification of *nuc* gene by PCR was used for the rapid identification of *S. aureus*. All the 13 isolates were confirmed as *S. aureus* by PCR (Figure 5). After the confirmation of *S. aureus*, amplification of *mecA* gene confirmed that 2 isolates were MRSA (Figure 6). The overall prevalence of MRSA was found as 15.38% (n=2/13). This result is lower than the study of [19] who detected 25% MRSA from human. This might be due to the variation in host and immune status of the host.

4. Conclusion

The high level of multiple drug resistance shown by the MRSA isolates in this study is of great concern. All the MRSA isolates showed resistance to at least 4 antibiotics, indicating the presence of strong selective pressure from antibiotics use for human patients. Using methicillin disk diffusion method for detection of MRSA has the same

sensitivity and specificity as PCR assay. The prevalence of MRSA among the *S. aureus* isolates in Bangladesh is 15.38%, which is slightly lower than that reported on previous study in Bangladesh. The prevalence of MRSA differs throughout the country. It depends on several factors such as indiscriminate use of antibiotics without sensitivity pattern of the infected organisms. For that reason, commensal organisms such as CNS acquired resistance to methicillin which may transfer to pathogenic *S. aureus*. On the other hand, hospital environment may play an important role to spread the infectious agents due to over-crowding of patients and attendants and unhygienic environment.

References

- [1] Donlan, R. M. Costerton, J. W. (2002). Biofilms: survival mechanisms of clinically relevant microorganisms. *Clin. Microbiol. Rev.* 15: 167-193.
- [2] Jevons, M. P. (1961). Cebinin-resistant *Staphylococci*. *Bangladesh Med. J.* 1: 124-125.
- [3] Islam, M. J. Uddin, M. S. Nasrin, M. S. Nazir, K. H. M. N. H. Rahman, M. T. Alam, M. M. (2007a). Prevalence of enterotoxigenic and toxic shock syndrome toxin-1 producing coagulase positive *Staphylococcus aureus* in human and their characterization. *Bangladesh J. Vet. Med.* 5: 115-119.
- [4] Islam, M. J. Uddin, M. S. Islam, M. A. Nazir, K. H. M. N. H. Rahman, M. T. Alam, M. M. (2007b). Detection and characterization of coagulase-positive *Staphylococcus aureus* of bovine origin producing enterotoxins and toxic shock syndrome toxin-1. *Bangladesh Vet.* 24: 27-33.
- [5] Begum, H. A. Uddin, M. S. Islam, M. J. Nazir, K. H. M. N. H. Islam, M. A. Rahman, M. T. (2007). Detection of biofilm producing coagulase positive *Staphylococcus aureus* from bovine mastitis, their pigment production, hemolytic activity and antibiotic sensitivity pattern. *J. Bangladesh Soc. Agric. Sci. Technol.* 4: 97-100.
- [6] Jahan, M. Rahman, M. Parvej, M. S. Chowdhury, S. M. Z. H. Haque, M. E. Talukder, M. A. K. Ahmed, S. (2015). Isolation and characterization of *Staphylococcus aureus* from raw cow milk in Bangladesh. *J. Adv. Vet. Anim. Res.* 2: 49-55.
- [7] Chandrasekaran, D. Venkatesan, P. Tirumurugan, K. G. Gowri, B. Subapriya, S. Thirunavukkarasu, S. (2014). Sub-acute mastitis associated with Methicillin Resistant *Staphylococcus aureus* in a cow: A case report. *J. Adv. Vet. Anim. Res.* 1: 235-237.
- [8] Sarker, M. S. Bupasha, Z. B. Rahman, M. M. Akter, S. Mannan, A. Ahaduzzaman, M. (2015). Surgical management of unilateral gangrenous mastitis in a doe: A case report. *J. Adv. Vet. Anim. Res.* 2: 232-235.
- [9] Abdelkhalek, A. Elsherbini, M. Elettriby, D. Sadak, A. (2016). Quality assessment of imported powder milk at Mansoura city, Egypt. *J. Adv. Vet. Anim. Res.* 3: 75-78.
- [10] Zarzour, J. Belle, E. A. (1978). Evaluation of three test procedures for identification of *Staphylococcus aureus* from clinical sources. *J. Clin. Microbiol.* 7: 133-136.
- [11] Tanzin, T. Nazir, K. H. M. N. H. Zahan, M. N. Parvej, M. S. Zesmin, K. Rahman, M. T. (2016). Antibiotic resistance profile of bacteria isolated from raw milk samples of cattle and buffaloes. *J. Adv. Vet. Anim. Res.* 3: 62-67.
- [12] Dewanand, R. K. Yuvaraj, S. Sukhadeo, B. B. (2007). PCR-based detection of genes encoding virulence determinants in *Staphylococcus aureus* from bovine subclinical mastitis cases. *J. Vet. Sci.* 8: 151-154.
- [13] Roy, S. R. Rahman, M. B. Hassan, J. Nazir, K. H. M. N. H. (2012). Isolation and identification of bacterial flora from internal organs of broiler and their antibiogram studies. *Microbes Health*, 1: 72-75.
- [14] Kenneth, T. (2005). Text book of Bacteriology. <http://www.textbookofbacteriology.net/>. (Accessed on June, 2006).
- [15] Stavropoulos, D. N. Hornby, A. S. (2008). Oxford English-Greek Learner's Dictionary. GN Stavropoulos (ed.). Oxford. Oxford University Press. pp. 207.
- [16] Anupurba, S. Sen, M. R. Nath, G. Sharma, B. M. Gulati, A. K. Mohapatra, T. M. (2003). Prevalence of methicillin resistant *Staphylococcus aureus* in a tertiary referral hospital in eastern Uttar Pradesh. *Indian J. Med. Microbiol.* 21: 49-51.
- [17] Rajadurai pandi, K. Mani, K. R. Panneerselvam, K. Mani, M. Bhaskar, M. Manikandan, P. (2006). Prevalence and antimicrobial susceptibility pattern of methicillin resistant *Staphylococcus aureus*: A multicentre study. *Indian J. Med. Microbiol.* 24: 34-8.
- [18] Parveen, S. Jyothsna, K. (2011). Methicillin Resistance among Isolates of *Staphylococcus aureus*. *Ann. Biolog. Res.* 2: 57-61.
- [19] Islam, M. A. Alam, M. M. Uddin, M. S. Kobayashi1, N. Ahmed, M. U. (2011). Detection of methicillin resistant *Staphylococcus aureus* (MRSA) from animal and human origin in Bangladesh by polymerase chain reaction. *Bangladesh J. Vet. Med.* 9: 161-166.