

# Rapid Determination of PCDDs, PCDFs and DL-PCBs in Foods, Feedingstuffs and Vegetable Oils Using New Modified Acid Silica

Ovanes Chakoyan

Department of Chromatography, Fidelitas Lab, Varna, Bulgaria

**Email address:**

[ovanes.chakoyan@fidelitasgroup.com](mailto:ovanes.chakoyan@fidelitasgroup.com)

**To cite this article:**

Ovanes Chakoyan. Rapid Determination of PCDDs, PCDFs and DL-PCBs in Foods, Feedingstuffs and Vegetable Oils Using New Modified Acid Silica. *Chemical and Biomolecular Engineering*. Vol. 8, No. 1, 2023, pp. 1-15. doi: 10.11648/j.cbe.20230801.11

**Received:** December 2, 2022; **Accepted:** January 4, 2023; **Published:** June 9, 2023

---

**Abstract:** Polychlorinated dibenzo-p-dioxins, dibenzofurans and dioxin-like polychlorinated biphenyls are persistent organic pollutants (POPs), which in the recent years received huge attention due to their extreme stability, high potential toxicity and bioaccumulation in food chains. Main source of human exposure to these compounds is discovered in foods of animal origin, especially foods rich of fat. The target of the present study was to set up an analytical method for the determination of PCDDs/PCDFs and DL-PCB in vegetable oils, sunflower meals, sunflower seeds, rapeseeds and milk powder. The first step consisted of a semi-automatic Soxhlet extraction for 3 hours, by using a mixture of Hexane: Acetone - 80: 20, followed by acid digestion with 55% acid silica, and filtration. After concentration, the extract is purified on multilayer column (silica gel, silica-KOH, silica-H<sub>2</sub>SO<sub>4</sub>, anhydrous Na<sub>2</sub>SO<sub>4</sub>) followed by an alumina column separation in two fractions (first fraction containing PCDDs/PCDFs, and second containing only PCBs). The purified extract was then analyzed by GC/MS/MS. The newly developed approach in our lab was capable to reduce the overall time of sample preparation down to seven hours/per sample. Since the method shows good mean recoveries for all labelled congeners spiked in the samples (for PCDDs/PCDFs – 80-110%, for DL-PCBs – 70-85%), we assumed the absence of overestimation or underestimation in the analyzed samples.

**Keywords:** Oil, Extraction, Polychlorinated-p-Dioxins, Polychlorinated Dibenzofurans, Polychlorinated Biphenyls, GC/MS/MS

---

## 1. Introduction

Dioxins are a group of persistent chemicals which are not produced intentionally, but are formed during combustion (burning) processes and as by-products of industrial processes. PCBs, polychlorinated biphenyls, have similar chemical structure as dioxins. They have been used in transformers, building materials, lubricants, coatings, plasticizers and inks, although their use has now largely been phased out. Both the dioxins and the PCBs are highly resistant to breakdown processes, and consequently persist in the environment, followed by uptake into the food chain. Up to 90% of human exposure to dioxin results from the consumption of food containing dioxins, mainly feedstuffs of animal origin with high fat content, since these contaminants accumulated in fatty tissues. Food stuffs in which dioxins can occur includes meat, fish, eggs, milk.

The term “dioxin” covers a group of 75 chemically similar polychlorinated dibenzo-p-dioxins (PCDDs) and 135 polychlorinated dibenzofurans (PCDFs). Each individual compound in the separate group is termed as congener. Figure 1 shows the general structure of PCDDs and PCDFs.

General structure of these compounds represents planar, tricyclic aromatic ether, that can have up to eight chlorine atoms attached to carbon atoms in the benzene rings. The number and position of chlorine atoms on the rings determine different isomers called congeners. Congeners with equal number of chlorine atoms are called homologues, and homologues with different chlorine substitution are called isomers. In general, term dioxins is used to refer to 75 congeners of PCDDs and 135 congeners of PCDFs (total of 210 compounds). Of these 210 compounds, only 17 congeners (7 PCDDs and 10 PCDFs) with chlorine atoms at position 2, 3, 7 and 8 showing toxicity [3].

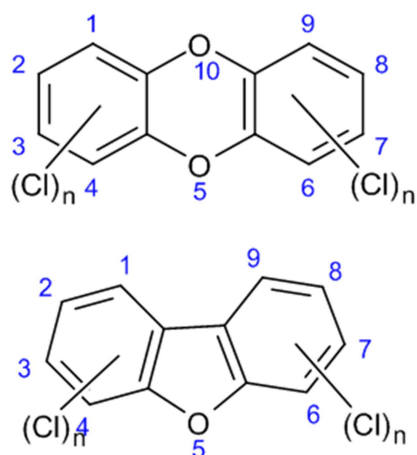


Figure 1. General structures of PCDDs and PCDFs.

Polychlorinated biphenyls (PCBs) are nonpolar, chlorinated aromatic hydrocarbons with chlorine atoms from 1 to 10, generating 209 compounds (congeners) as dioxins.

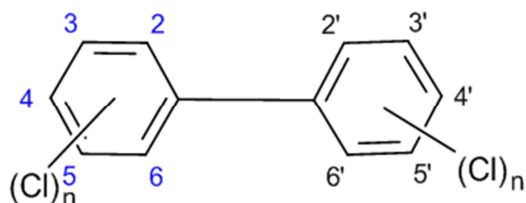


Figure 2. General structure of PCBs.

PCBs with equal number of chlorine atoms also called homologues, and homologues with different substitution positions are referred to as isomers. Positions 2, 2', 6 and 6' are called ortho-positions; 3, 3', 5 and 5' are called meta-positions; and positions 4 and 4' are para-positions. Rings in biphenyls can be planar or nonplanar, depending of the steric and electronic effects of chlorine atoms, especially in ortho-position, where bulky chlorine atoms forces aromatic benzene rings to rotate out of planar configuration. Meta- and para – PCBs have planar molecules and these compounds are called coplanar congeners (co-PCBs).

When more than two chlorine atoms in ortho-position are present, PCBs assume nonplanar con figuration and are indicated as non-planar congeners.

Due their lipophilic nature, PCDDs, PCDFs and PCBs are usually found adhering or dissolved in rich of lipid content foofstuffs like meat, fatty fish, milk, dairy products and vegetable oils. Therefore, methods of analysis for official control pf the level pf lipophilic toxic compounds in EU-regulated foods of animal and plant origin includes an initial lipid extraction step (liquid-liquid extraction, PLE extraction, Soxhlet extraction), which isolates the lipids from potentially interfering compounds such as carbohydrates.

The first step in food preparation methods after extraction is removal of lipids content completely as possible. EPA 8290, EPA 1613 and ISO 16215 recommends uses of concentrated sulphuric acid lipid digestion, and also different ratio impregnated silica gel with sulphuric acid column

chromatography.

Direct digestion with concentrated mineral acid leads to carbonization of compounds of interest, and therefor to low recoveries of PCDD/PCDF and PCBs.

In this study, in our lab we performed a new approach for eliminating lipid interfering compounds, with good recoveries and without complex pre-cleanup procedure with sulphuric acid leading to huge losses and requiring very carefully precautions measures. Using a novel triple quadrupole GC/MS/MS system equipped with highly efficient detector and three forms of noise-reduction technologies. The MS analyzer was equipped with BEIS (Boosted Efficiency Ion Source) that maximizes efficiency through optimization the focal point of the electron beam in EI ionization mode making capable in full validation method for DL-PCBs, and PCDDs/PCDFs in food and feed.

## 2. Materials and Methods

### 2.1. Chemicals and Standards

17 native and  $^{13}\text{C}$ - labeled PCDDs/PCDFs congeners, 12 native and  $^{13}\text{C}$ -labeled DL-PCBs were selected for current study, purchased from Wellington Laboratories (Greyhound Chromatography, UK). For PCDDs/PCDFs and DL-PCBs, a nine-point calibration curve ranging from 0.01 pg/ $\mu\text{l}$  to 50 pg/ $\mu\text{l}$  and from 0.1 pg/ $\mu\text{l}$  to 50 pg/ $\mu\text{l}$  were used, respectively.  $^{13}\text{C}$ -labeled congeners using isotope dilution method were presents in every calibration solution at concentration 2 pg/ $\mu\text{l}$  and 5 pg/ $\mu\text{l}$ , accordingly. All standard solutions and final extracts before injection were made of nonane (Fischer Scientific, USA).

All reagents used for the analysis of PCDDs/PCDFs and PCBs were of trace analysis grade, n-hexane, dichloromethane and acetone were supplied from Sigma-Aldrich and Fischer Scientific.

Additional equipment includes nitrogen evaporator, rotatory vacuum evaporator (Buchi R100, Switzerland), an analytical precision scale (RADWAG AS 220. R2, Poland), Laboratory Mill Perten 120, Sweden), Hot extraction unit (FOSS ST243 SOXTEC, Denmark).

### 2.2. Sample Collections

Selected sunflower meal, sunflower seed and rapeseed samples were collected at local feed processing plants as for the edible vegetable oils and milk powder samples were collected from grocery stores throughout city Varna. The cereals and cereal bran samples containing barley, wheat and corn were collected from various localities of Bulgaria.

### 2.3. Sample Preparation

#### 2.3.1. Soxhlet Extraction of Sunflower Meals, Cereals, Cereals-Based Foods and Mil Powder

All samples except for vegetable oils, were extracted with FOSS extraction device. Briefly, 10 g of sample was weighted to 0.01 g accuracy and place in extraction cell, spiked with extraction labelled  $^{13}\text{C}$  - PCDDs/PCDFs and DL-PCBs

congeners, and leave for equilibration around 30 min.

And extracted with solvent mixture Hexane: Acetone (80:20) for 3 hours. After that the extract was evaporated to dryness. After that, sunflower meals and milk powder extract was weighted for determination lipid content. The whole extracts were dissolved in hexane, and added 55% acid silica. The samples were shaken vigorously for 30 sec. and put into centrifugation at 5000 rpm for 5 min, filtrated and evaporated to dryness.

### 2.3.2. Extraction of Sunflower Seeds and Rapeseeds

Briefly, 10 g milled sunflower seed and rapeseed samples was extracted for 3 hours. After concentration, determination of lipid content was obtained gravimetrically. The extracted fat was fortified with extraction labelled mixtures of  $^{13}\text{C}$  - PCDDs/PCDFs and DL-PCBs congeners, and leave for homogenization on around 5 min. The oilseed extracts were directly dissolved in hexane and mixed with 55% acid/silica.

Each vegetable oil was weighted around 2.5 g, dissolved in 30 ml hexane and performed acid digestion with 17 g 55% acid-silica, followed by filtration of clean extract and evaporation to dryness.

### 2.3.3. Extraction of Cereals and Cereal-Based Products

10 g milled cereal samples were extracted with solvent mixture Hexane: DCM (1:1) for three hours, evaporated on rotatory evaporator to dryness and subjected directly to multilayer column cleanup.

### 2.3.4 Multilayer Column Clean-up

All samples except cereal extract, which are directly put on multilayer column purification after filtration and evaporation to dryness, were subjected to cleanup additionally on multilayer acid/base silica column in following order (1 g silica, 5 g NaOH-silica, 10 g 44% acid-silica, 1 g sodium sulfate), with hexane. Separation of dioxins and PCBs was accomplished on alumina column (5 g) by wet filling with hexane. The first fraction containing non-ortho and mono-ortho-PCBs was eluted by 70 ml hexane: DCM (95:5), and the second fraction with PCDDs/PCDFs was eluted with 45 ml Hexane: DCM (50:50). After evaporation to complete dryness, each fraction was quantitatively transferred to vial

with insert (300  $\mu\text{l}$  volume), spiked with  $^{13}\text{C}_{12}$  - 1,2,3,4-TCDD/ $^{13}\text{C}_{12}$ - 1,2,3,7,8,9-HxCDD recovery standard mixture for PCDD/PCDF and  $^{13}\text{C}$  - PCB70, PCB 111, PCB138 and PCB 189 for DL- PCBs, concentrated to a 20  $\mu\text{l}$  final volume and injected in GC/MS/MS [4, 5].

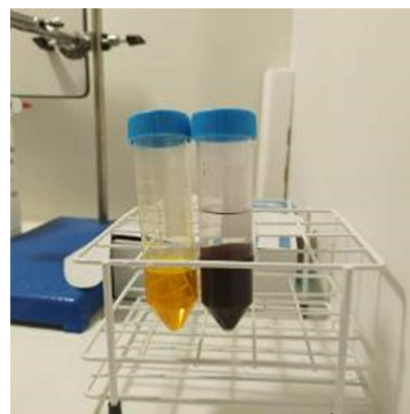


Figure 3. Vegetable oil sample, before and after acid-silica (55%) clean up.

## 2.4. Instrumentation and Measurements

A Shimadzu GC 8000 series gas chromatograph equipped with triple quadrupole mass detector TQ8050 was used. The MS analyzer was equipped with a BEIS ionization chamber. The injection volume was set to 2  $\mu\text{l}$  for PCDDs/PCDFs and DL-PCBs.

Chromatographic separations of calibration standards and all extracts for PCDDs/PCDFs were performed on a SH Rxi-5Sil MS 60m x 0.25 mm I. D. x 0.25  $\mu\text{m}$  (Shimadzu, USA) using a injector temperature at 280°C in splitless mode and oven temperature program starting at 150°C (1 min), ramp at 200°C/min until 220°C, 20°C/min until 260°C (3 min), 50°C/min until 320°C (3.5 min), and total run of 47 min.. Ion source temperature was set to 230°C and interface temperature was set to 300°C. Helium (1.5 ml/min) was used as the carrier gas. The MS analyzer was operated in MRM mode, with collision energy and transitions listed in Table 1 for determination of PCDDs/PCDFs [7].

Table 1. PCDD/PCDF Masses and CE.

Compound Name	Quantitative Ion	CE	Reference Ion	CE
2,3,7,8 – TCDD	319.9>256.9	20	321.9>258.9	20
1,2,3,7,8 –PCDD	335.9>292.9	20	353.9>290.9	20
1,2,3,4,7,8 – HxDD	389.8>326.9	22	391.8>328.9	22
1,2,3,6,7,8 – HxDD	389.8>326.9	22	391.8>328.9	22
1,2,3,7,8,9 - HxDD	389.8>326.9	22	391.8>328.9	22
1,2,3,4,6,7,8 - HpDD	423.8>360.8	22	425.8>362.8	22
OCDD	457.7>394.7	22	459.7>396.7	22
2,3,7,8 – TCDF	303.9>240.9	28	305.9>242.9	28
1,2,3,7,8 – PCDF	355.9>292.9	20	353.9>290.9	20
2,3,4,7,8 – PCDF	339.9>276.9	30	337.9>274.9	30
1,2,3,4,7,8 – HxDf	389.8>326.9	22	391.8>328.9	22
1,2,3,6,7,8 – HxDf	373.8>310.9	30	375.8>312.9	30
2,3,4,6,7,8 - HxDf	373.8>310.9	30	375.8>312.9	30
1,2,3,7,8,9 - HxDf	373.8>310.9	30	375.8>312.9	30
1,2,3,4,6,8,9 - HpDF	419.8>355.9	30	421.8>357.9	30

Compound Name	Quantitative Ion	CE	Reference Ion	CE
1,2,3,4,7,8,9 - HpDF	407.8>344.8	30	409.8>346.8	30
OCDF	441.8>378.8	30	443.8>380.8	30
2,3,7,8 - TCDD (13C12)	315.9>251.9	28	317.9>253.9	28
1,2,3,7,8 - PCDD (13C12)	367.9>303.9	20	365.9>301.9	20
1,2,3,4,7,8 - HxDD (13C12)	401.8>337.9	22	399.9>335.9	22
1,2,3,6,7,8 - HxDD (13C12)	401.8>337.9	22	399.9>335.9	22
1,2,3,7,8,9 - HxDD (13C12)	401.8>337.9	22	399.9>335.9	22
1,2,3,4,6,7,8 - HpDD (13C12)	419.8>355.9	30	421.8>357.9	30
OCDD (13C12)	469.8>405.8	22	471.8>407.8	22
2,3,7,8 - TCDF (13C12) (13C12)	315.9>251.9	28	317.9>253.9	28
1,2,3,7,8 - PCDF (13C12) (13C12)	351.9>287.9	30	349.9>285.9	30
2,3,4,7,8 - PCDF (13C12)	351.9>287.9	30	349.9>285.9	30
1,2,3,4,7,8 - HxDF (13C12)	385.8>321.9	30	387.8>323.9	30
1,2,3,6,7,8 - HxDF (13C12)	385.8>321.9	30	387.8>323.9	30
2,3,4,6,7,8 - HxDF (13C12)	373.8>310.9	30	375.8>312.9	30
1,2,3,7,8,9 - HxDF (13C12)	385.8>321.9	30	387.8>323.9	30
1,2,3,4,6,8,9 - HpDF (13C12)	419.8>355.9	30	421.8>357.9	30
1,2,3,4,7,8,9 - HpDF (13C12)	419.8>355.9	30	421.8>357.9	30
OCDF (13C12)	453.8>389.8	30	455.8>391.8	30

Separations of DL-PCBs were performed on the same column, injector was set to 250°C and using different oven temperature program starting at 120°C (1 min), ramp at 20°C/min until 180°C, 5°C/min until 200°C, 2°C/min until 240 °C (10 min), 2°C/min until 290°C (5 min) and total run of

68 min. Ion source temperature was set to 230°C and interface temperature was set to 300°C. Helium (2.15 ml/min) was used as the carrier gas [8, 9]. The MS analyzer was operated in MRM mode, with collision energy and transitions listed in Table 2 for determination of DL-PCBs.

Table 2. PCBs Masses and CE.

Compounds Name	Quantitative Ion	CE	Reference Ion	CE
PCB 77	289.9>219.9	26	291.9>221.9	26
PCB 81	289.9>219.9	26	291.9>221.9	26
PCB 105	323.9>253.9	26	325.9>255.9	26
PCB 114	323.9>253.9	26	325.9>255.9	26
PCB 118	323.9>253.9	26	325.9>255.9	26
PCB 123	323.9>253.9	26	325.9>255.9	26
PCB 126	323.9>253.9	26	325.9>255.9	26
PCB 156	359.9>289.9	28	361.9>291.9	28
PCB 157	359.9>289.9	28	361.9>291.9	28
PCB 167	359.9>289.9	28	361.9>291.9	28
PCB 169	359.9>289.9	28	361.9>291.9	28
PCB 189	393.8>323.9	28	395.8>325.9	28
<sup>13</sup> C <sub>12</sub> - PCB 77	301.9>231.9	26	303.9>233.9	26
<sup>13</sup> C <sub>12</sub> - PCB 81	301.9>231.9	26	303.9>233.9	26
<sup>13</sup> C <sub>12</sub> - PCB 105	335.9>265.9	26	337.9>267.9	26
<sup>13</sup> C <sub>12</sub> - PCB 114	335.9>265.9	26	337.9>267.9	26
<sup>13</sup> C <sub>12</sub> - PCB 118	335.9>265.9	26	337.9>267.9	26
<sup>13</sup> C <sub>12</sub> - PCB 123	335.9>265.9	26	337.9>267.9	26
<sup>13</sup> C <sub>12</sub> - PCB 126	335.9>265.9	26	337.9>267.9	26
<sup>13</sup> C <sub>12</sub> - PCB 156	371.8>301.9	28	373.8>303.9	28
<sup>13</sup> C <sub>12</sub> - PCB 157	371.8>301.9	28	373.8>303.9	28
<sup>13</sup> C <sub>12</sub> - PCB 167	371.8>301.9	28	373.8>303.9	28
<sup>13</sup> C <sub>12</sub> - PCB 169	371.8>301.9	28	373.8>303.9	28
<sup>13</sup> C <sub>12</sub> - PCB 189	405.8>323.9	28	395.8>325.9	28

The GC/MS/MS system was calibrated for PCDD. PCDF using response factors generated from a nine –point curve at the level concentrations presented in the Table 3 and Table 4.

Table 3. Calibration solutions [CS] of PCDD/PCDF (ng/ml).

Analyte	Caibration levels								
Native standard	CS1	CS2	CS3	CS4	CS5	CS6	CS7	CS8	CS9
2,3,7,8 - TCDD	0.025	0.05	0.1	0.5	2	5	10	20	50
2,3,7,8-TCDF	0.025	0.05	0.1	0.5	2	5	10	20	50
1,2,3,7,8-PCDD	0.025	0.05	0.1	0.5	2	5	10	20	50
1,2,3,7,8-PCDF	0.025	0.05	0.1	0.5	2	5	10	20	50
2,3,4,7,8-PCDF	0.025	0.05	0.1	0.5	2	5	10	20	50

Analyte	Caibration levels								
Native standard	CS1	CS2	CS3	CS4	CS5	CS6	CS7	CS8	CS9
1,2,3,4,7,8-HXDF	0.05	0.1	0.2	1	4	10	20	40	100
1,2,3,6,7,8-HXDF	0.05	0.1	0.2	1	4	10	20	40	100
2,3,4,6,7,8-HXDF	0.05	0.1	0.2	1	4	10	20	40	100
1,2,3,4,7,8-HXDD	0.05	0.1	0.2	1	4	10	20	40	100
1,2,3,6,7,8-HXDD	0.05	0.1	0.2	1	4	10	20	40	100
1,2,3,7,8,9-HXDD	0.05	0.1	0.2	1	4	10	20	40	100
1,2,3,7,8,9-HXDF	0.05	0.1	0.2	1	4	10	20	40	100
1,2,3,4,6,7,8-HPDF	0.05	0.1	0.2	1	4	10	20	40	100
1,2,3,4,6,7,8-HPDD	0.05	0.1	0.2	1	4	10	20	40	100
1,2,3,4,7,8,9-HPDF	0.05	0.1	0.2	1	4	10	20	40	100
OCDD	0.1	0.2	0.4	2	8	20	40	80	200
OCDF	0.1	0.2	0.4	2	8	20	40	80	200
Internal standards									
<sup>13</sup> C <sub>12</sub> - 2,3,7,8 - TCDD	2	2	2	2	2	2	2	2	2
<sup>13</sup> C <sub>12</sub> - 2,3,7,8-TCDF	2	2	2	2	2	2	2	2	2
<sup>13</sup> C <sub>12</sub> - 1,2,3,7,8-PCDD	2	2	2	2	2	2	2	2	2
<sup>13</sup> C <sub>12</sub> - 1,2,3,7,8-PCDF	2	2	2	2	2	2	2	2	2
<sup>13</sup> C <sub>12</sub> - 2,3,4,7,8-PCDF	2	2	2	2	2	2	2	2	2
<sup>13</sup> C <sub>12</sub> - 1,2,3,4,7,8-HXDF	2	2	2	2	2	2	2	2	2
<sup>13</sup> C <sub>12</sub> - 1,2,3,6,7,8-HXDF	2	2	2	2	2	2	2	2	2
<sup>13</sup> C <sub>12</sub> - 2,3,4,6,7,8-HXDF	2	2	2	2	2	2	2	2	2
<sup>13</sup> C <sub>12</sub> - 1,2,3,4,7,8-HXDD	2	2	2	2	2	2	2	2	2
<sup>13</sup> C <sub>12</sub> - 1,2,3,6,7,8-HXDD	2	2	2	2	2	2	2	2	2
<sup>13</sup> C <sub>12</sub> - 1,2,3,7,8,9-HXDD	2	2	2	2	2	2	2	2	2
<sup>13</sup> C <sub>12</sub> - 1,2,3,7,8,9-HXDF	2	2	2	2	2	2	2	2	2
<sup>13</sup> C <sub>12</sub> - 1,2,3,4,6,7,8-HPDF	2	2	2	2	2	2	2	2	2
<sup>13</sup> C <sub>12</sub> - 1,2,3,4,6,7,8-HPDD	2	2	2	2	2	2	2	2	2
<sup>13</sup> C <sub>12</sub> - 1,2,3,4,7,8,9-HPDF	2	2	2	2	2	2	2	2	2
<sup>13</sup> C <sub>12</sub> - OCDD	4	4	4	4	4	4	4	4	4
<sup>13</sup> C <sub>12</sub> - OCDF	4	4	4	4	4	4	4	4	4
Recovery standards									
<sup>13</sup> C <sub>12</sub> - 1,2,3,4 – TCDD	2	2	2	2	2	2	2	2	2
<sup>13</sup> C <sub>12</sub> -12,3,4,6,9 – HXDF	2	2	2	2	2	2	2	2	2
<sup>13</sup> C <sub>12</sub> -1,2,3,4,6,8,9 – HPDF	2	2	2	2	2	2	2	2	2

Table 4. Calibration solutions [CS] of DL-PCBs (ng/ml).

Analyte	Calibration levels							
Native standard	CS1	CS2	CS3	CS4	CS5	CS6	CS7	CS8
PCB 77	0.2	0.5	1	2	5	10	20	50
PCB 81	0.2	0.5	1	2	5	10	20	50
PCB 105	0.2	0.5	1	2	5	10	20	50
PCB 114	0.2	0.5	1	2	5	10	20	50
PCB 118	0.2	0.5	1	2	5	10	20	50
PCB 123	0.2	0.5	1	2	5	10	20	50
PCB 126	0.2	0.5	1	2	5	10	20	50
PCB 156	0.2	0.5	1	2	5	10	20	50
PCB 157	0.2	0.5	1	2	5	10	20	50
PCB 167	0.2	0.5	1	2	5	10	20	50
PCB 169	0.2	0.5	1	2	5	10	20	50
PCB 189	0.2	0.5	1	2	5	10	20	50
Internal Standard								
<sup>13</sup> C <sub>12</sub> - PCB 77	1	1	1	1	1	1	1	1
<sup>13</sup> C <sub>12</sub> - PCB 81	1	1	1	1	1	1	1	1
<sup>13</sup> C <sub>12</sub> - PCB 105	1	1	1	1	1	1	1	1
<sup>13</sup> C <sub>12</sub> - PCB 114	1	1	1	1	1	1	1	1
<sup>13</sup> C <sub>12</sub> - PCB 118	1	1	1	1	1	1	1	1
<sup>13</sup> C <sub>12</sub> - PCB 123	1	1	1	1	1	1	1	1
<sup>13</sup> C <sub>12</sub> - PCB 126	1	1	1	1	1	1	1	1
<sup>13</sup> C <sub>12</sub> - PCB 156	1	1	1	1	1	1	1	1
<sup>13</sup> C <sub>12</sub> - PCB 157	1	1	1	1	1	1	1	1
<sup>13</sup> C <sub>12</sub> - PCB 167	1	1	1	1	1	1	1	1
<sup>13</sup> C <sub>12</sub> - PCB 169	1	1	1	1	1	1	1	1
<sup>13</sup> C <sub>12</sub> - PCB 189	1	1	1	1	1	1	1	1

## 2.5. GC/MS/MS Calibration and Analyte Identification

The concentration of the all congeners was determined using nine-point calibration curve (standard solutions CS1 to CS9 as indicated in Table 3) for PCDDs/PCDFs and seven-point calibration curve (standard mixture CS1 to CS7 as indicated in Table 4) for DL-PCBs. Calculation of relative response factors for native congeners were calculated using following formula:

$$RF = \frac{(A^1 + A^2) \cdot Q_{IS}}{(A_{IS}^1 + A_{IS}^2) \cdot Q}$$

Where:

$A^1, A^2$  = areas of the two native congener diagnostic ions (Tables 1 and 2).

$A_{IS}^1, A_{IS}^2$  = areas of the two internal standard diagnostic ions (Table 1 and Table 2).

$Q$  = concentration of corresponding native congener, ng/ml

$Q_{IS}$  = concentration of internal standard relevant to native congener, ng/ml

Next, the same procedure was applied to calculation of the

relative response factor for the internal standards using the appropriate recovery standards using the following formula:

$$RRF_{IS} = \frac{(A_{IS}^1 + A_{IS}^2) \cdot Q_{rec}}{(A_{rec}^1 + A_{rec}^2) \cdot Q_{IS}}$$

Where:

$A_{rec}^1, A_{rec}^2$  = areas of the two recovery standard diagnostic ions

$Q_{rec}$  = concentration of corresponding recovery standard, ng/ml

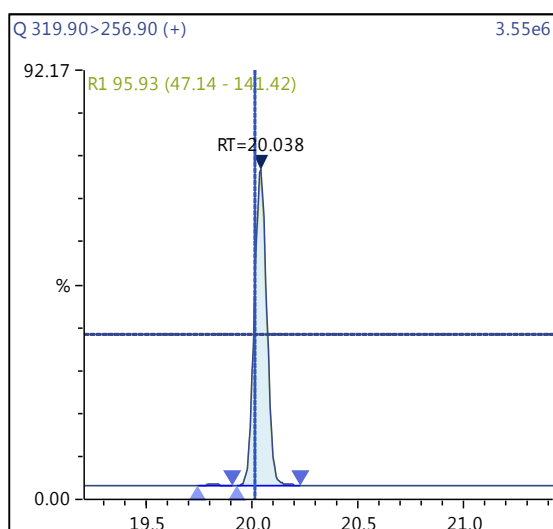
The limit of detection (LOQ) is not a constant value, it depends by dilutions, weight of the samples, analyte recovery and the sum of all congeners shall be about one fifth of the maximum level [3].

Because S/N (signal/noise) ratio is too small we choose lowest concentration point on a calibration curve approach for determination iLOQ. The LOQ is calculated from the lowest concentration point taking into account the recovery of internal standards added and the sample intake.

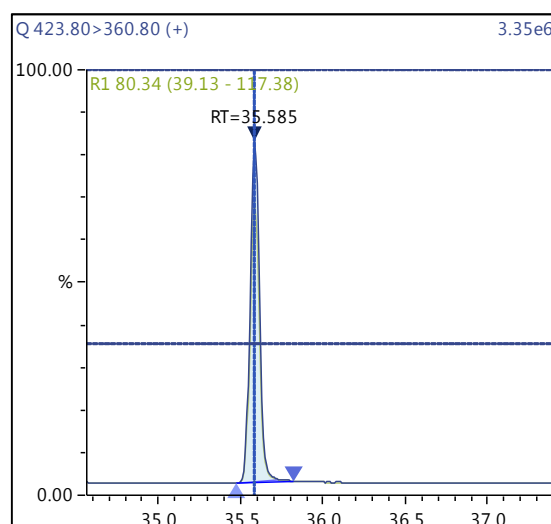
$$\text{Concentration, LOQ pg/g} = \text{Lowest Concentration (pg/ul)} * \left( \frac{\text{final extract (ul)}}{\text{sample weight (g)} * RRF_{IS}} \right).$$

**Table 5.** Ion Ratio of native congeners and ISTD recoveries, LOQs values of calculated on the basis of lowest calibration level.

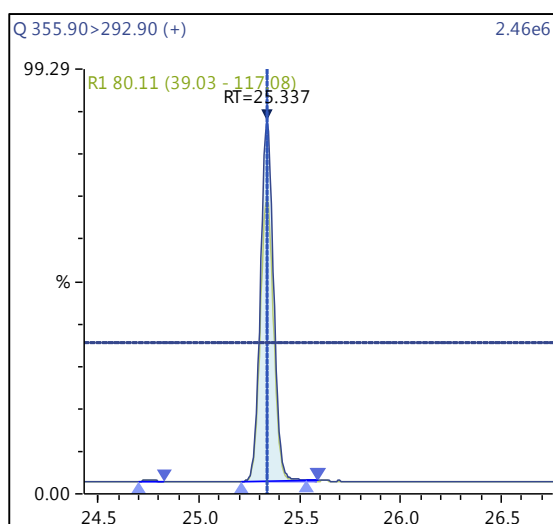
Congener Name	Ret. Time	TEF	ISTD Recovery	UB WHO TEQ	MB WHO TEQ
2,3,7,8 - TCDD	20.01	1	1.160	0.0200	0.0100
2,3,7,8-TCDF	19.40	0.1	1.007	0.0020	0.0010
1,2,3,7,8-PCDD	25.34	1	0.857	0.0400	0.020
1,2,3,7,8-PCDF	23.70	0.03	1.257	0.0012	0.0006
2,3,4,7,8-PCDF	24.90	0.3	1.200	0.0012	0.0006
1,2,3,4,7,8-HXDF	29.54	0.1	0.983	0.0080	0.0040
1,2,3,6,7,8-HXDF	29.74	0.1	1.041	0.0080	0.0040
2,3,4,6,7,8-HXDF	30.60	0.1	1.000	0.0060	0.0030
1,2,3,4,7,8-HXDD	30.88	0.1	0.646	0.0012	0.0006
1,2,3,6,7,8-HXDD	31.00	0.1	0.774	0.0060	0.0030
1,2,3,7,8,9-HXDD	31.46	0.1	0.631	0.0080	0.0040
1,2,3,7,8,9-HXDF	31.90	0.1	0.749	0.0080	0.0040
1,2,3,4,6,7,8-HPDF	34.10	0.01	0.952	0.0040	0.0020
1,2,3,4,6,7,8-HPDD	35.58	0.01	0.719	0.0010	0.0005
1,2,3,4,7,8,9-HPDF	36.20	0.01	0.791	0.0040	0.0020
OCDD	39.19	0.0003	0.719	0.00003	0.00002
OCDF	39.38	0.0003	1.011	0.00002	0.00001
PCB 77	22.52	0.0001	0.846	0.000017	0.000008
PCB 81	21.86	0.0003	0.835	0.000047	0.000002
PCB 123	23.89	0.00003	0.687	0.000003	0.000001
PCB 118	24.14	0.00003	0.812	0.000002	0.000001
PCB 114	24.81	0.00003	0.768	0.000004	0.000002
PCB 105	25.85	0.00003	0.770	0.000004	0.000002
PCB 126	28.24	0.1	1.041	0.02012	0.01006
PCB 167	29.69	0.00003	1.011	0.000006	0.000003
PCB 156	31.53	0.00003	0.932	0.000005	0.000002
PCB 157	31.95	0.00003	0.978	0.000005	0.000002
PCB 169	35.33	0.03	0.914	0.004578	0.002289
PCB 189	39.60	0.00003	1.135	0.000006	0.000003



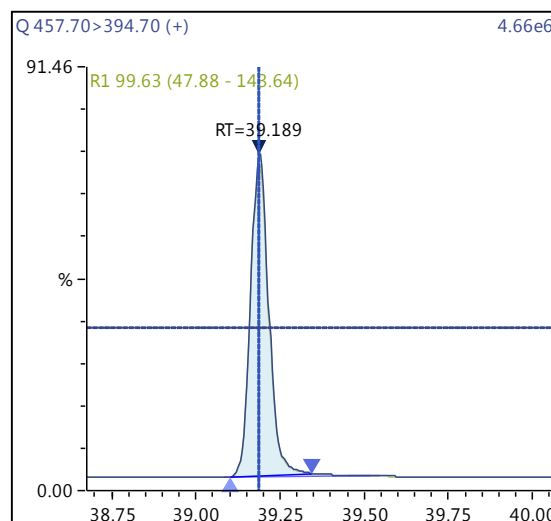
(a)



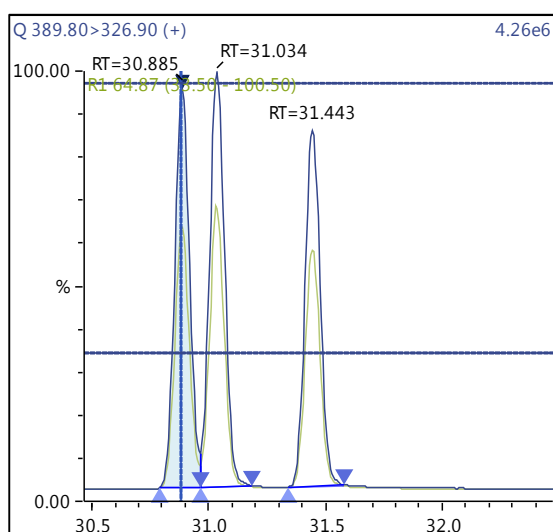
(a)



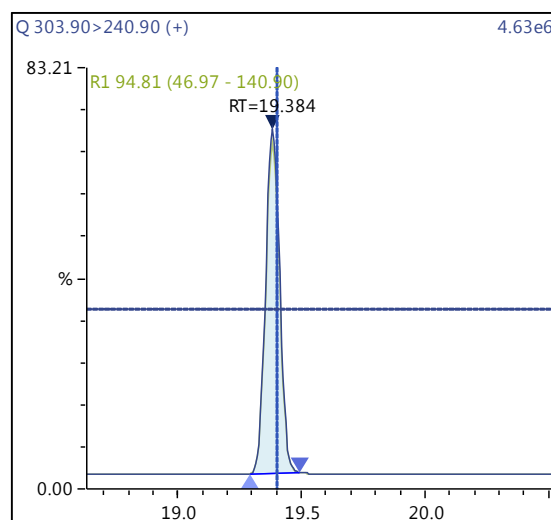
(b)



(b)



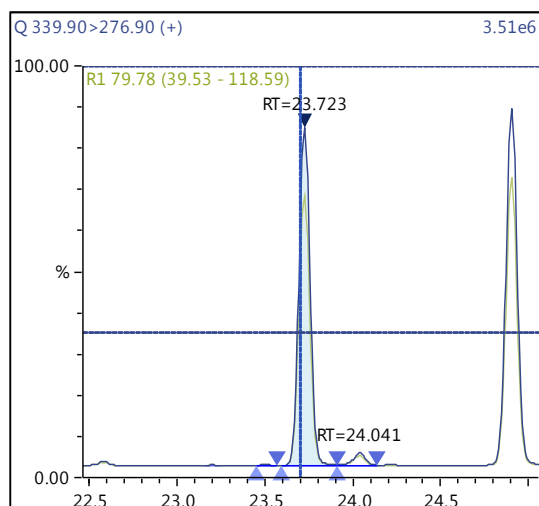
(c)



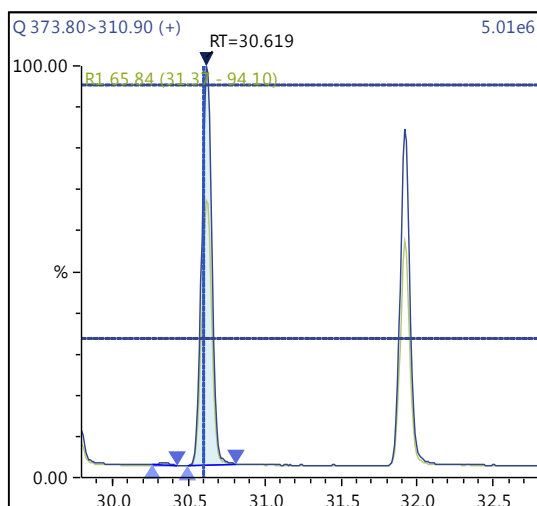
(a)

**Figure 4.** Chromatographic Profiles of TCDD, PCDD and HxDD: (a) TCDD (b) PCDD (c) HxDD.

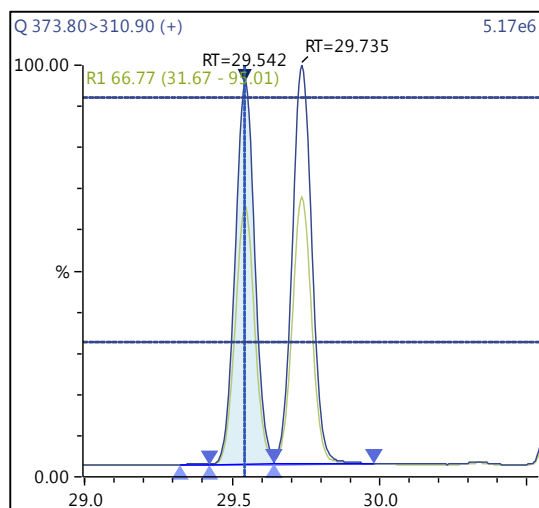
**Figure 5.** Chromatographic Profiles of HpDD and OCDD: (a) HpDD (b) OCDD.



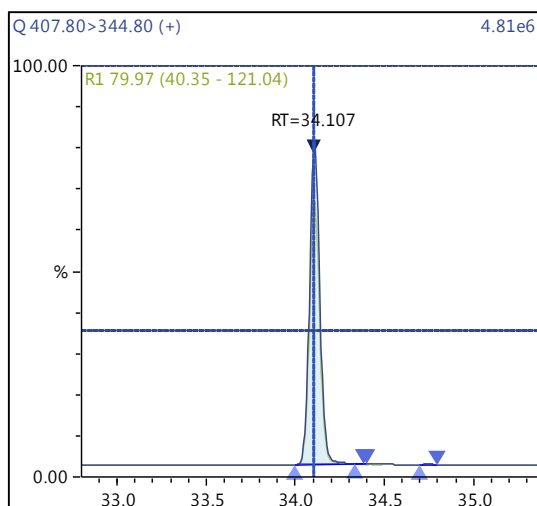
(b)



(b)



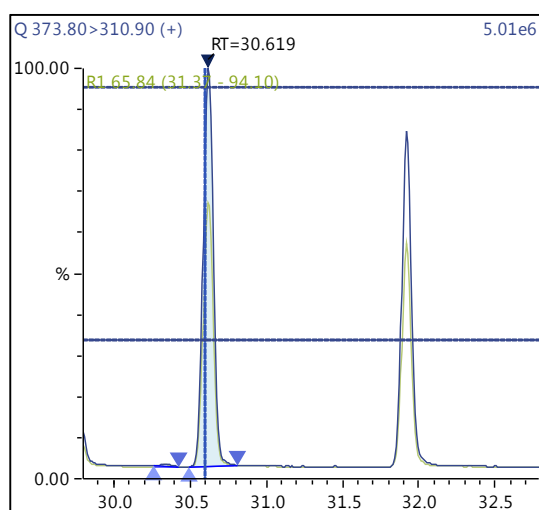
(c)



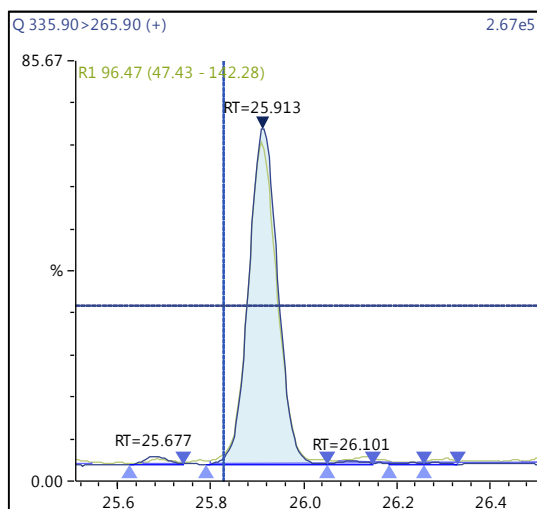
(c)

**Figure 6.** Chromatographic Profiles of TCDF, PCDF and HxCDF: (a) TCDF (b) PCDF (c) HxCDF.

**Figure 7.** Chromatographic Profiles of HpDFs and OCDF: (a, b) HpDF (c) OCDF.

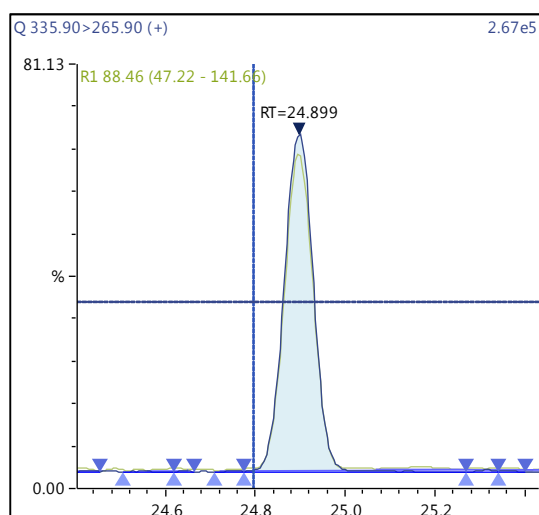


(a)

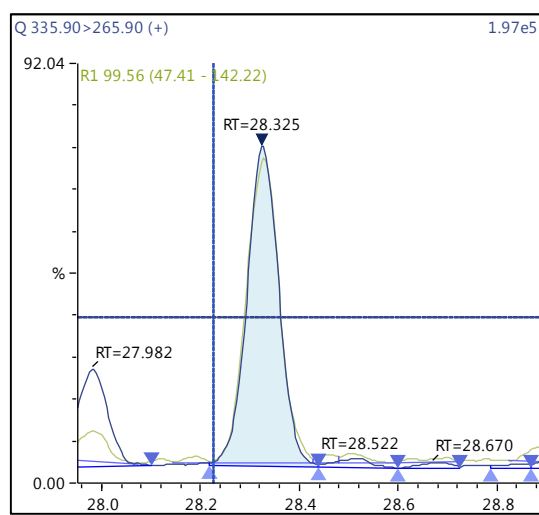


(a)

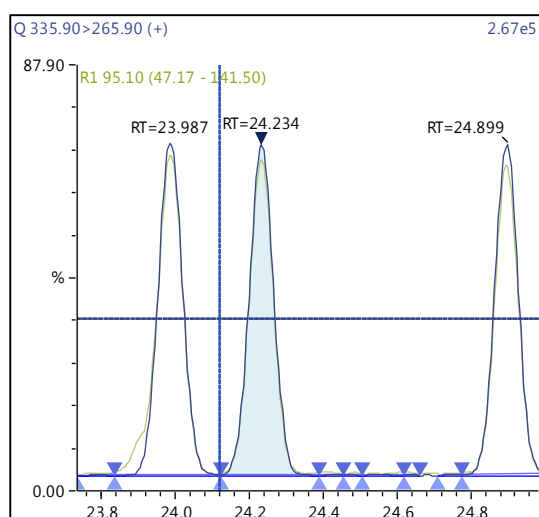




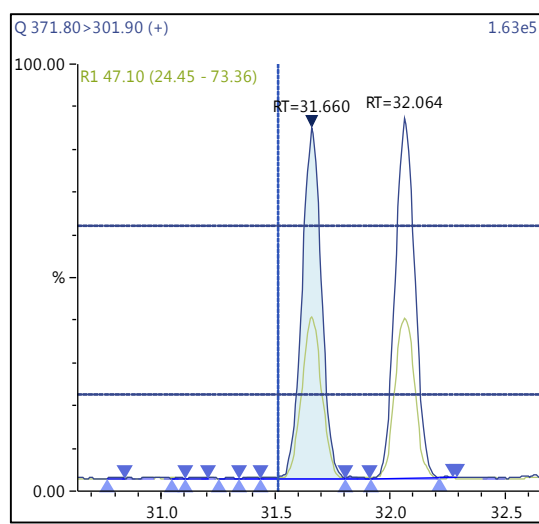
(b)



(b)



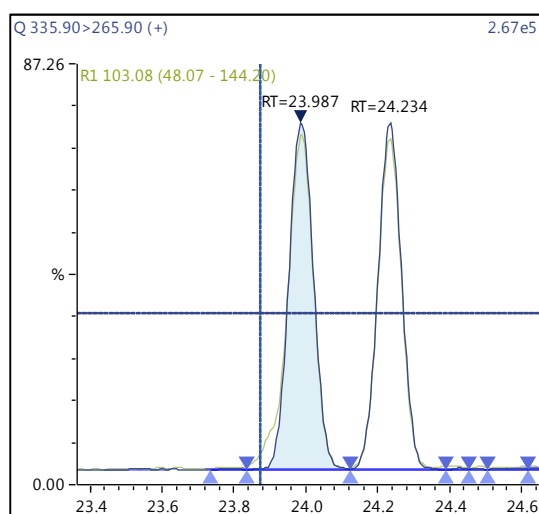
(c)



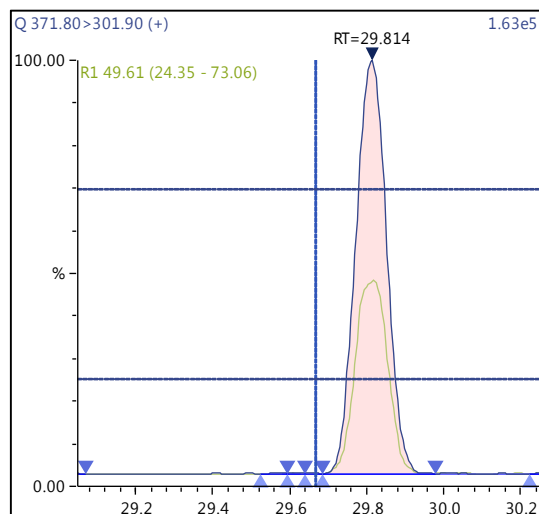
(c)

**Figure 8.** Chromatographic Profiles of DL-PCBs: (a) PCB 105 (b) PCB 114 (c) PCB 118.

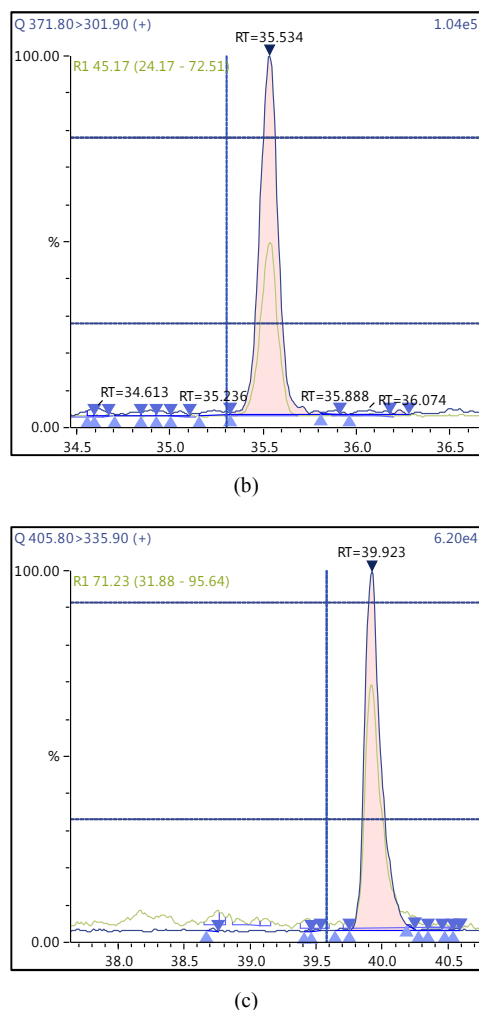
**Figure 9.** Chromatographic Profiles of DL-PCBs: (a) PCB 123 (b) PCB 126 (c) PCB 156, PCB 157.



(a)



(a)



**Figure 10.** Chromatographic Profiles of DL-PCBs: (a) PCB 167 (b) PCB 169 (c) PCB 180.

**Table 6.** Calibration data for PCDDs/PCDFs and DL-PCBs congeners.

Peak Name	Retention Time (min)	Coefficient of Determination ( $R^2$ )	RF RSD (%)	Mean RF (Slope)	Range (pg)
2,3,7,8 - TCDD	20.01	0.99914	2.33	2.19	0.025 – 50.00
2,3,7,8-TCDF	19.40	0.99940	1.85	2.21	0.025 – 50.00
1,2,3,7,8-PCDD	25.34	0.99947	1.62	1.62	0.025 – 50.00
1,2,3,7,8-PCDF	23.70	0.99924	2.05	2.05	0.025 – 50.00
2,3,4,7,8-PCDF	24.90	0.99953	1.77	1.77	0.025 – 50.00
1,2,3,4,7,8-HXDF	29.54	0.99953	1.83	1.83	0.050 – 100.00
1,2,3,6,7,8-HXDF	29.74	0.99955	1.90	1.89	0.050 – 100.00
2,3,4,6,7,8-HXDF	30.60	0.99960	1.51	1.51	0.050 – 100.00
1,2,3,4,7,8-HXDD	30.88	0.99937	1.74	1.74	0.050 – 100.00
1,2,3,6,7,8-HXDD	31.00	0.99947	1.64	1.64	0.050 – 100.00
1,2,3,7,8,9-HXDD	31.46	0.99951	1.99	1.99	0.050 – 100.00
1,2,3,7,8,9-HXDF	31.90	0.99940	1.81	1.81	0.050 – 100.00
1,2,3,4,6,7,8-HPDF	34.10	0.99927	1.75	1.76	0.050 – 100.00
1,2,3,4,6,7,8-HPDD	35.58	0.99958	2.01	2.01	0.050 – 100.00
1,2,3,4,7,8,9-HPDF	36.20	0.99946	1.90	1.90	0.050 – 100.00
OCDD	39.19	0.99942	1.39	1.40	0.10 – 200.00
OCDF	39.38	0.99903	1.58	1.58	0.10 – 200.00
PCB 77	22.52	0.99962	0.90	2.73	0.20 – 50.00
PCB 81	21.86	0.99941	1.00	2.85	0.20 – 50.00
PCB 123	23.89	0.99951	2.85	2.93	0.20 – 50.00
PCB 118	24.14	0.99942	0.79	3.02	0.20 – 50.00
PCB 114	24.81	0.99922	3.01	2.93	0.20 – 50.00
PCB 105	25.85	0.99920	2.93	2.96	0.20 – 50.00
PCB 126	28.24	0.99929	0.86	2.88	0.20 – 50.00

### 3. Results

#### 3.1. Calibration

Figures 5 and 6 shows example mass chromatograms for each reference standard and negative samples for all test analytes. Calibration standards (seven levels for PCDD/Fs and seven levels for DL-PCBs) were analysed for three analytical sequences and demonstrated good RF%RSDs within EU regulations. Table 6 shows the data obtained for PCDD/Fs and dioxin-like PCBs.

The relative response factors (RRFs) were calculated at each concentration level and the linearity was estimated based on the RRF and in the determination coefficient ( $R^2$ ). The accuracy and instrumental limit of quantification (iLOQ) were assessed for each congener. Accuracy was expressed in terms of bias% and mean squared error and it was measured in standard solutions [15]. The iLOQ, was calculated at the lowest calibration point and set by 10 times standard deviation using 10 replicate injections. Finally, precision was expressed as relative standard deviation (RSD%) for the calibration curve levels ( $n = 10$  for the lowest calibration point).

The lowest acceptable calibration point was determined according two criteria. First, the calculated RSDs of the lowest level for all congeners must be  $\leq 15\%$ . Second, the relative difference between the RRF average obtained for all levels and the RRF average obtained for the lowest level must be  $\leq 30\%$ , according to the regulation. As can be observed in Table 6, this criteria was met and linearity was acceptable within the calibration range. At this point, the lowest calibration level was used to determine the iLOQ [10-12].

Peak Name	Retention Time (min)	Coefficient of Determination ( $R^2$ )	RF RSD (%)	Mean RF (Slope)	Range (pg)
PCB 167	29.69	0.99937	0.69	2.87	0.20 – 50.00
PCB 156	31.53	0.99926	0.73	3.00	0.20 – 50.00
PCB 157	31.95	0.99947	0.69	2.93	0.20 – 50.00
PCB 169	35.33	0.99932	0.82	2.96	0.20 – 50.00
PCB 189	39.60	0.99938	0.75	2.85	0.20 – 50.00

### 3.2. Reaching the Level of Interest

Each congener has different strength of toxicity, and is expressed as Toxic Equivalency Factor (TEF). The TEF value of 2,3,7,8-TCDD has values of 1, which is the most toxic congener.

All the regulated target compounds include the most toxic congeners of PCDD/Fs and DL-PCBs which have a toxic equivalent factor assigned by the World Health Organization (WHO) [1, 6].

The maximum acceptable level for the PCDDs/PCDFs and DL-PCBs in foods and feeds are prescribed by their toxic equivalents (TEQ). The TEQ was calculated by multiplying the concentration of each compound by the TEF, and then calculating the total TEQ for all congeners [14].

In this study, two types of vegetable oils (rapeseed and sunflower oil), and sunflower meal pellets were analyzed using GC/MS/MS. The LOQ of each individual congener was

calculated from the lowest concentration point (CS1) taking account the recovery of internal standards (60-120%) and ion abundance.

### 3.3. Quantification of PCDD/PCDFs and DL-PCBs in Sample Extracts

Following successful validation of the method, the corresponding congeners were quantified in the sample extracts. Excellent chromatographic separation with minimal matrix interference was observed for all labelled congeners in all sample extracts analyzed.

The ion ratio (IR) abundance for selected transitions of each of PCDD/PCDFs and DL-PCBs congeners was measured in each of the samples analyzed and the values were compared with measured ion ratio values (average from the calibration standards CS1-CS9). The results of this study show that all the IR for the analyzed compounds were within the 15% tolerance, meeting the EU criteria for dioxin confirmation [2].

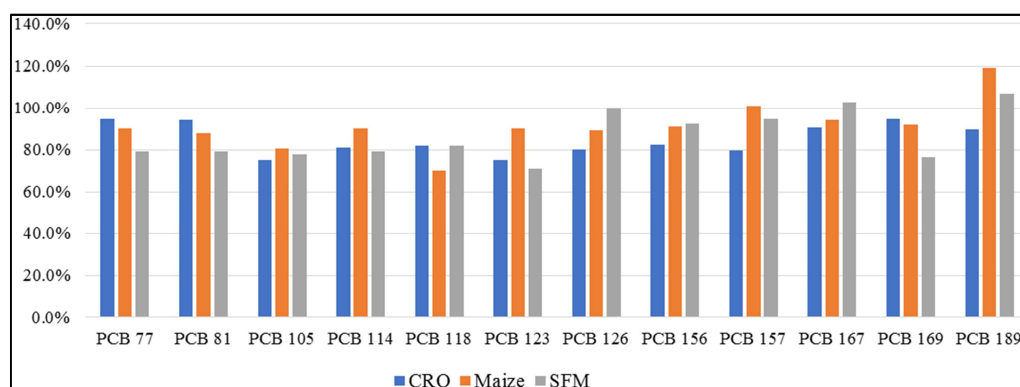


Figure 11. PCDD/PCDFs data for sunflower feed meal (SFM), crude sunflower oil (CSO) and crude rapeseed oil (CRO).

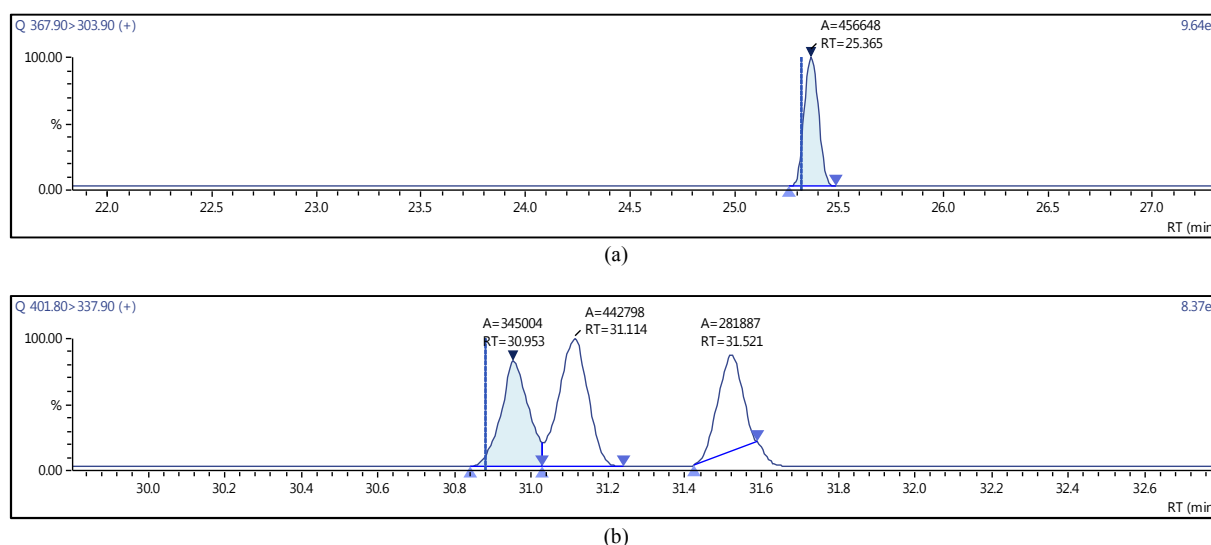
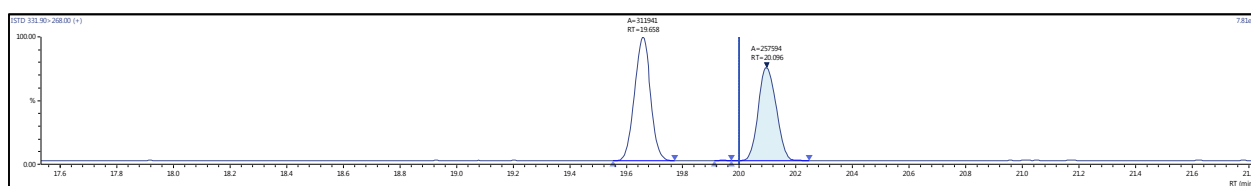
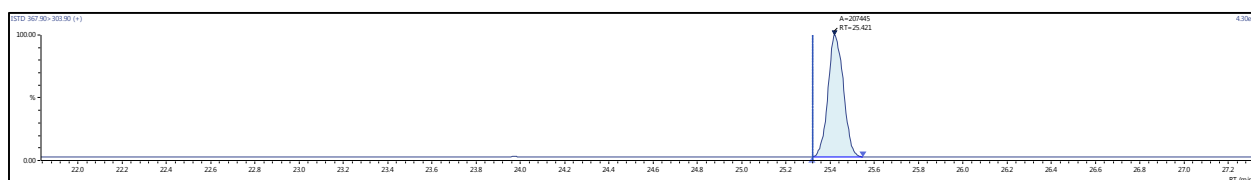


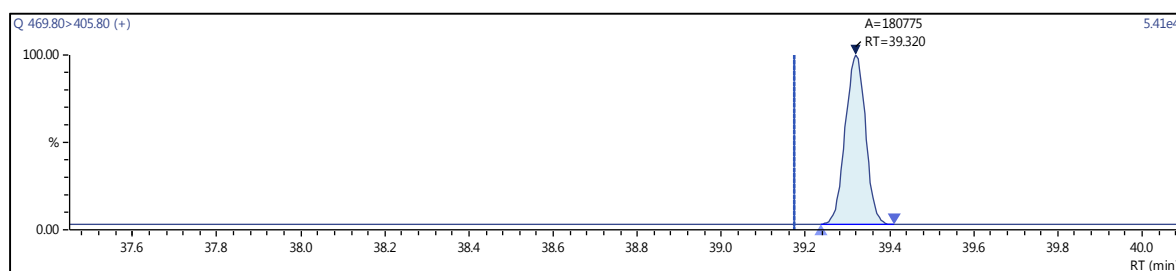
Figure 12. Chromatographic Profiles of PCDD/PCDFs in maize extract: (a) TCDD (b) HxCDD.



(a)

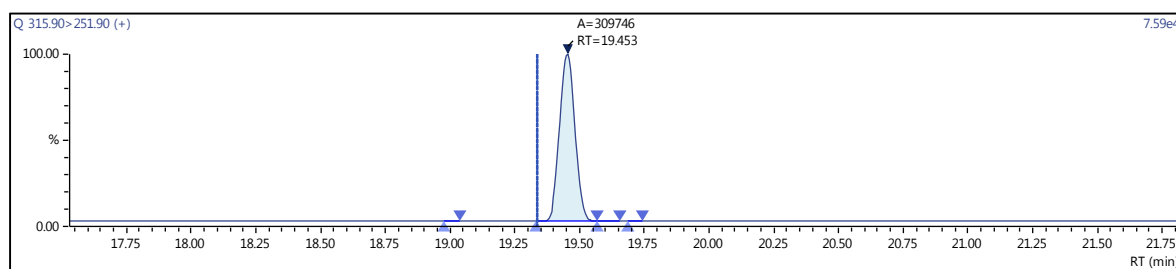


(b)

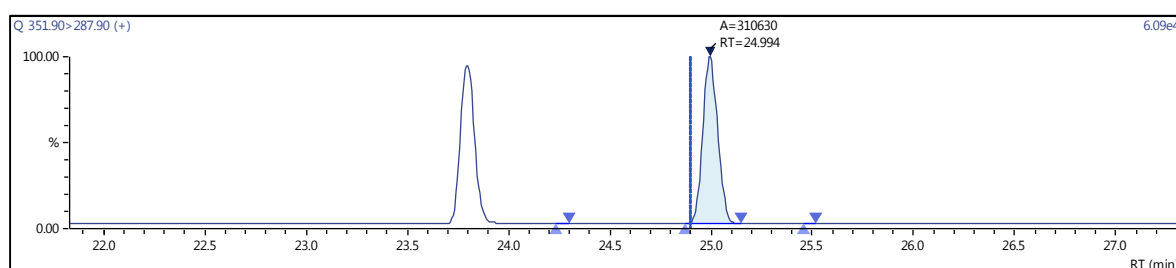


(c)

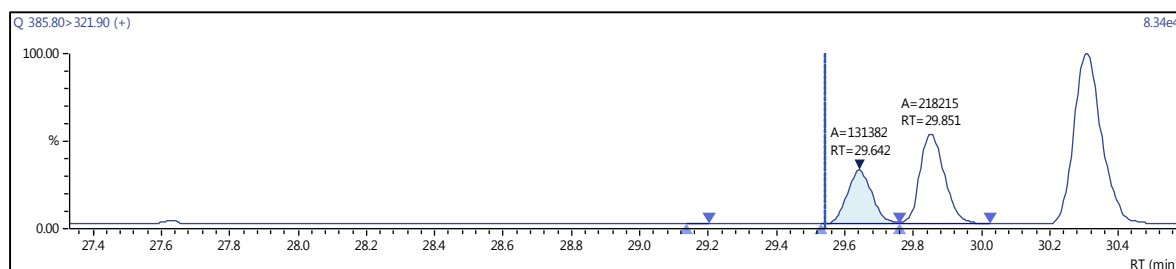
**Figure 13.** Chromatographic Profiles of PCDD/PCDFs in crude sunflower oil: (a) TCDD (b) PCDD (c) OCDD.



(d)

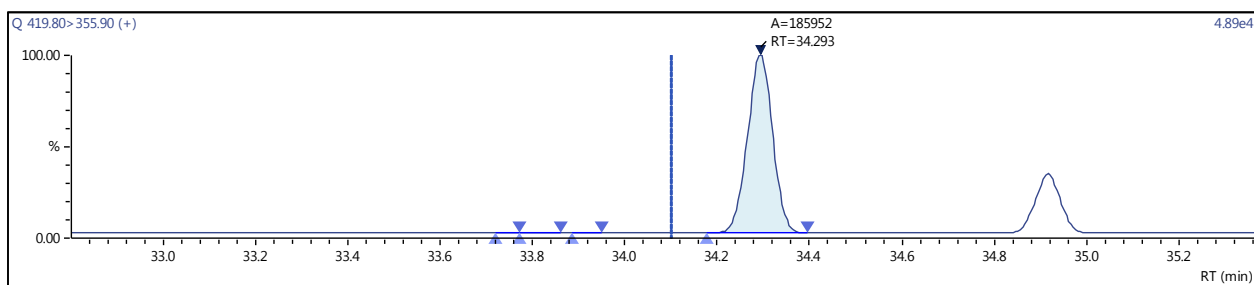


(e)

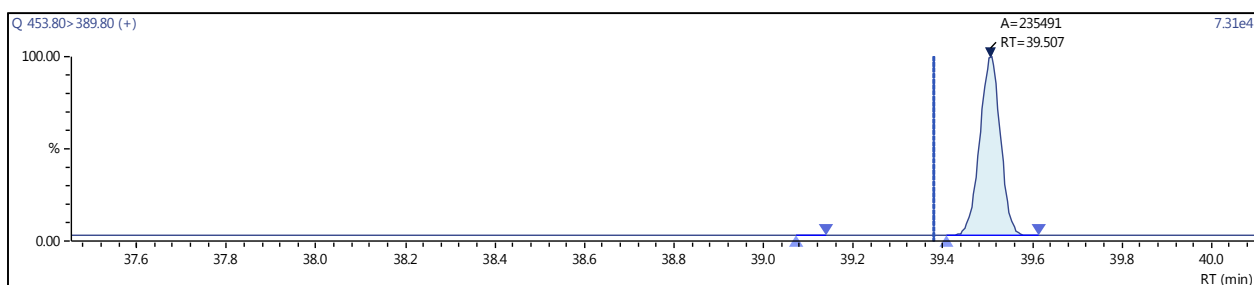


(f)

**Figure 14.** Chromatographic Profiles of PCDD/PCDFs in crude sunflower oil: (d) TCDF (e) PCDF (f) HxDF.

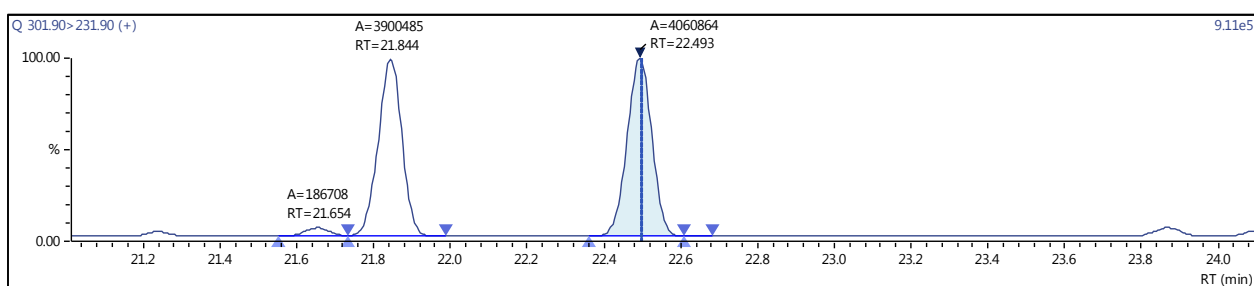


(g)

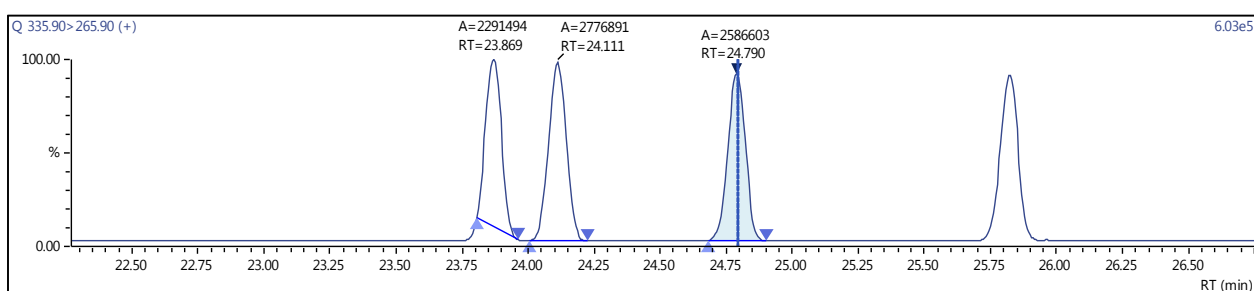


(h)

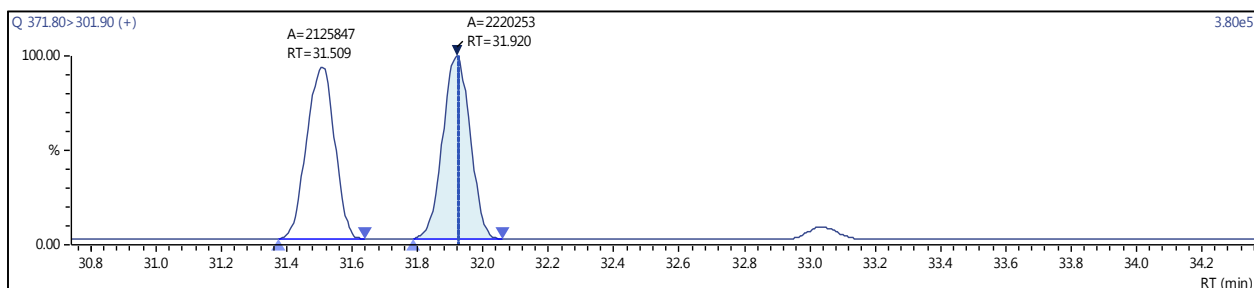
**Figure 15.** Chromatographic Profiles of PCDD/PCDFs in crude sunflower oil: (g) HpDF (h) OCDF.



(a)



(b)



(c)

**Figure 16.** Chromatographic Profiles of DL-PCBs in crude rapeseed oil: (a) PCB 77, PCB 81 (b) PCB 105, 114, 118, 123; (c) PCB 156, 157.

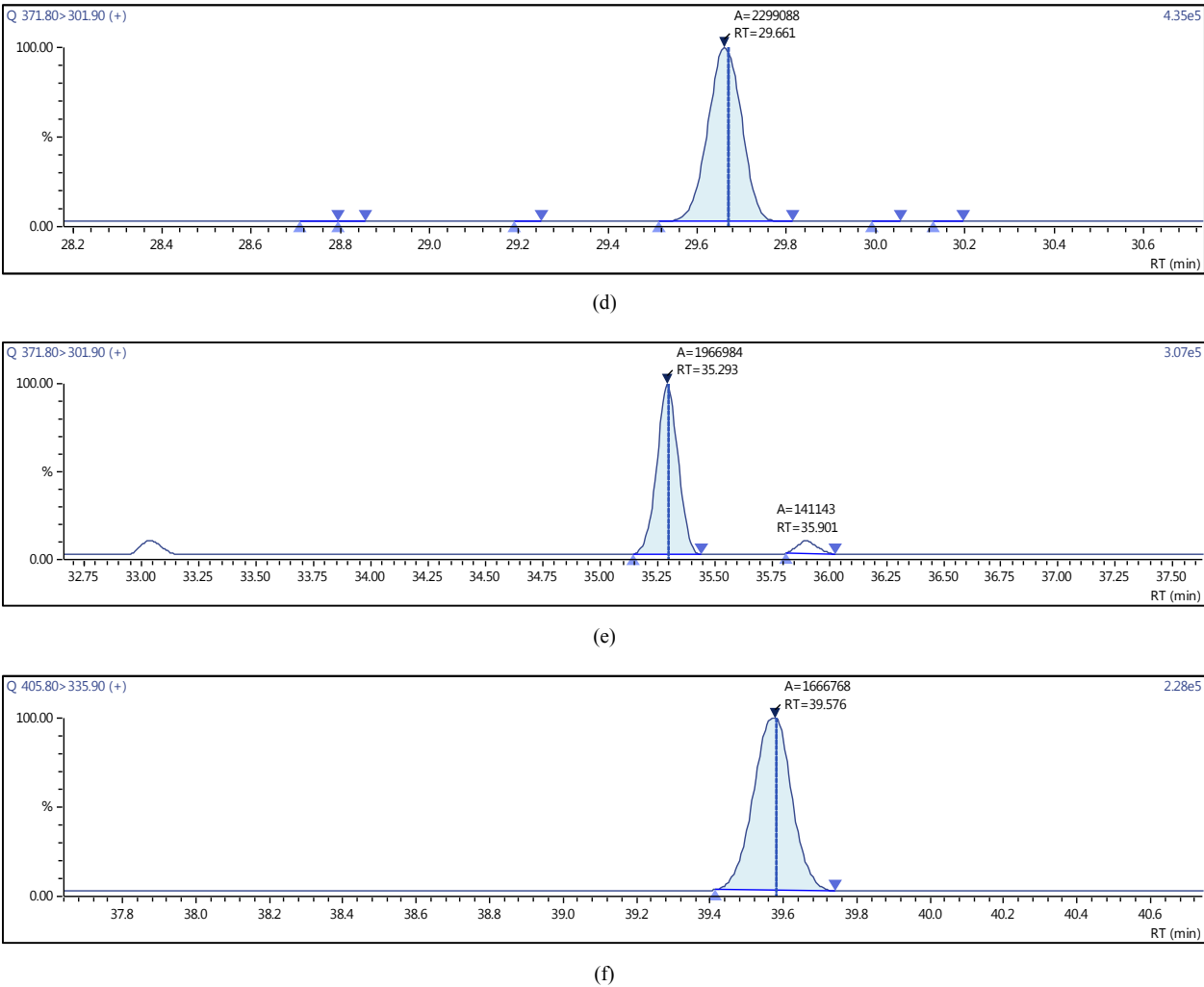


Figure 17. Chromatographic Profiles of DL-PCBs in crude rapeseed oil: (d) PCB 167 (e) PCB 169 (f) PCB 189.

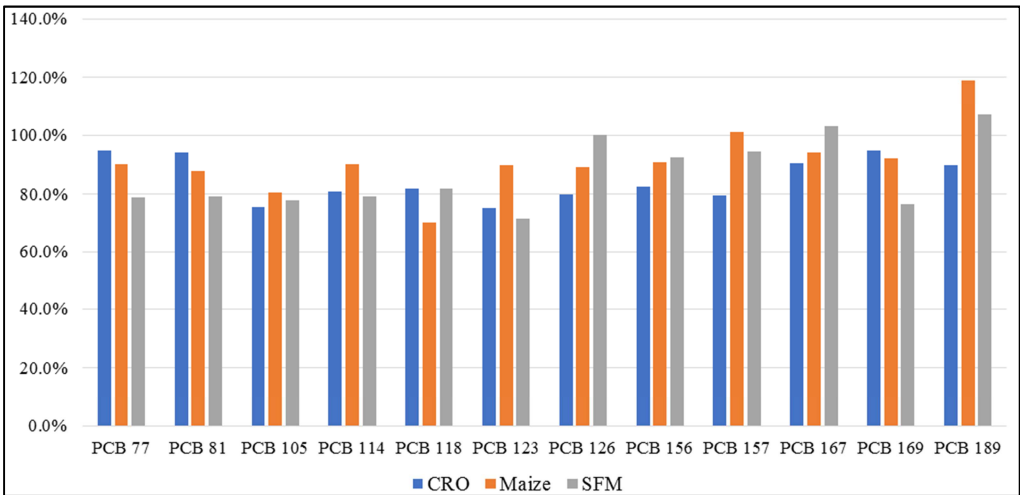


Figure 18. DL-PCBs data for sunflower feed meal (SFM), crude sunflower oil (CSO) and crude rapeseed oil (CRO).

4. Discussion

The advantages of the new approach are obvious. Combination of short extraction time, use of small solvent

volume and high performance clean-up strategy results in short delivery time and high quality chromatograms which are easy to process.

The extraction of maize, wheat and sunflower meals starts with sample intake of 10 gram and the required

volume of organic solvent is 70 ml. The total extraction time required is approximately 1 hour. At the end of extraction time, the solvent is concentrated down to near dryness the final extract fat/oil and put directly on clean-up column. After purification the obtained two fractions are evaporated to 20 µl in GC vial equipped with insert and put directly in an auto-sampler [13].

In the case of vegetable oil, the samples were subjected to acid digestion before multilayer column cleanup and the remaining procedure as same as mentioned above.

## 5. Conclusions

A GC/triple quadrupole MS/MS method has been developed and fully validated in accordance with criteria in EU Regulation 709/2014 that allows the use of GC/triple quadrupole MS/MS as a confirmatory method for official control of PCDDs, PCDFs and DL-PCBs in animal feedstuffs and vegetable oils. This method meets the requirements of the regulation, and can achieve similar performance to GC/HRMS.

The clear and confident detection of these congeners at very low levels, even within typically complex food and feed matrices, illustrates the high sensitivity of the method, as well as its high analytical value considering the extremely high toxicity of many dioxins.

Finally, the stability of the target ion ratios across the entire set of analyses – including a range of PCDD/PDFs and DL-PCBs concentrations and potential matrix effects – supports the utility and reliability of this method for high confidence analyses to meet current regulatory demands.

## References

- [1] Van den Berg, M.; Birnbaum, L. S.; Denison, M.; De Vito, M.; Farland, W.; Feeley, M.; Fiedler, H.; Hakansson, H.; Hanberg, A.; Haws, L.; et al. The 2005 World Health Organization reevaluation of human and mammalian toxic equivalency factors for dioxins and dioxin-like compounds. *Toxicol. Sci.* 2006, 93, 223–241.
- [2] European Commission (EC) 2006. Commission Regulation No. 199/2006 of 3 February 2006 amending Regulation (EC) No 466/2001 setting maximum levels for certain contaminants in foodstuffs as regards dioxins and dioxin-like PCBs. *Off J, L* 32, 04/02/2006, 34-38.
- [3] Ellison S. L. R., Rosslein M. & Williams A. (eds). 2000. EURACHEM/CITAC Guide CG4: Quantifying uncertainty in analytical measurement, Second Ed. EURACHEM, QUAM: 2000. 1, 120 pp.
- [4] Method 1613, “Tetra-through Octa-Chlorinated Dioxins and Furans by Isotope Dilution HRGC/HRMS”, Revision A, October 1993.
- [5] Method 1668 Rev. A: Chlorinated biphenyl congeners in water, soil, sediment, and tissue by HRGC/HRMS. USEPA, Washington DC.
- [6] Furst P. 2001. Contribution of dioxin-like PCB to total toxic equivalents of dairy products. *Organohalogen Compounds*, 51, 279-282.
- [7] Takakura M., Lehardy T., Marchard P. Analysis of Dioxins in Foods and Feeds Using GC-MS/MS, First Edition, July, 2018.
- [8] Hamm S., Grumping R. & Shwietering J. 2005. Levels of polychlorinated dibenzo(p)dioxins, dibenzofurans and dioxin-like PCBs in milk, milk products and eggs from west European countries. *Organohalogen Compounds*, 60, 199-202.
- [9] Vestraete F. 2005. EU-strategy to reduce the presence of dioxins, furans and dioxin-like PCBs in feed and food-existing measures. *Organohalogen Compounds*, 67, 1421-1423.
- [10] De Greyt, W., J. De Kock, M. Kokken, and M. Kellens. Removal of Contaminants from edible oils: Current Status and Future Developments. Paper presented at the Lipidforum Seminar on Recent Developments in the Processing of Oils and Fats, Blue Lagoon, Iceland, September 28-20, 2000.
- [11] Van den Berg, M., L. S. Birnbaum, A. T. C. Bosveld, B. Brunstorm, P. Cook, M. Feeley, J. P. Giesy, A. Hanberg, R. Hasegawa, S. W. Kennedy, T. et al., Toxic Equivalent Factors (TEFs) for PCBs, PCDDs, PCDFs for Humans and Wildlife, *Environ. Health Perspect.* 106: 775-792 (1998).
- [12] Fiedler, H., Cooper K. R., Bergek, S., Hjelt, M., Rappe, C. Polychlorinated dibenzodioxins and polychlorinated dibenzofurans (PCDD/PCDF) in food samples collected in Southern Mississippi, USA. *Chemosphere* 34, 1411-1419.
- [13] Ramos, L., Eljarrat, E., Henandez, L. M., Rivera, J., Gonzales, M. J. Levels of PCBs, PCDDs and PCDFs in commercial butter samples in Spain. *Chemosphere* 38, 3141-3153 (1999).
- [14] Bosio, A., Llobet, J. M., Domingo, J. L., Casas, C., Teixido, A., and Muller, L., 2002. Levels of PCDD/PCDFs in food samples from Catalonia, Spain, *Organohalogen Compounds* 57, 105.
- [15] EC Directive 2044/44/EC of 13 April 2004 amending Directive 2002/69/EC laying down the sampling methods and the methods of analysis for the official control of dioxins and the determination of dioxin-like PCBs in foodstuffs. *OJEC L*113/17.